

to the Blue Springs High School Concert Choir, Blue Springs, MO,
their accompanist, Linda VerDught, and director, Carl VunCannon III

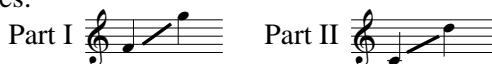
A Festive Alleluia

Two-part Chorus and Piano*

M. L. L.

Mary Lynn Lightfoot

Ranges:



With joyful intensity ♩ = 138-144



I

II

Al-le-lu-ia! O sing al - le-lu - ia! Come let us sing_ a joy-ful

Al-le-lu-ia! O sing al - le-lu - ia! Come let us sing_ a joy-ful

Duration: approx. 2:05

*Also available for Three-part Mixed or SATB (15/1416H) and SSA (15/1417H).

© 1999 Heritage Music Press, a division of The Lorenz Corporation. All rights reserved. Printed in U.S.A.

Reproduction of this publication without permission of the publisher is a criminal offense subject to prosecution.

I
al-le-lu-ia!... Al-le-lu-ia! O sing al - le-lu - ia! Joy-ful-ly sing al-le-

II
al-le-lu-ia!... Al-le-lu-ia! O sing al - le-lu - ia! Joy-ful-ly sing al-le-

I
lu-ia, O sing! Sing al - le - lu - ia! O sing al - le-

II
lu-ia, O sing! Sing al - le - lu - ia! O sing al - le-

I
lu - ia! *f* Al-le-lu-ia! *mf* Al-le-lu-ia! O sing al - le-lu - ia!

II
lu - ia! *f* Al-le-lu-ia!

I
Come let us sing — a joy-ful al-le-lu-ia! —

II
Come let us sing — a joy-ful al-le-lu-ia! — Al-le-lu-ia! O sing

mf

I
Joy-ful-ly sing al-le-lu-ia, O sing! Sing al-le-

II
al-le-lu-ia! Joy-ful-ly sing al-le-lu-ia, O sing!

28

I
lu-ia! O sing al-le-

II
O sing al-le-lu-ia! O sing al-le-

mf

mp

mf

mp

I
lu - ia!

II
lu - ia!

Al - le - lu -

mf

f

mf

36

I
Al-le-lu - ia, al-le-lu, al - le-lu - ia! Al - le - lu -

II
ia, sing al-le-lu, al - le-lu - ia, al-le-lu - ia!

mf

I
ia! Sing al-le-lu - ia, O sing al-le-lu - ia, sing al-le-lu - ia, O

II
Al-le-lu - ia! Sing al-le-lu - ia, O sing al-le-lu - ia, sing al-le-lu - ia, O

mp *cresc.*

mp *cresc.*

mp *cresc.*

42

I *mf* *mp* *cresc.*
sing al-le-lu! — Sing al-le-lu - ia, O sing al-le-lu - ia!

II *mf* *mp* *cresc.*
sing al-le-lu! — Sing al-le-lu - ia, O sing al-le-lu - ia!

mf *mp* *cresc.*

I 48 *mf*
Sing al-le-lu - ia, O sing al-le-lu! —

II *mf*
Sing al-le-lu - ia, O sing al-le-lu! —

48 *mf*

I *cresc.* *f* *opt. div.*
Sing al-le-lu - ia, O sing al-le-lu - ia, al - le - lu, al-le-lu-ia!

II *cresc.* *f*
Sing al-le-lu - ia, O sing al-le-lu - ia, al - le - lu, al-le-lu-ia!

cresc. *f*

56 *f*

I Al-le-lu-ia! O sing al - le-lu - ia! Come let us sing - a joy-ful

II Al-le-lu-ia! O sing al - le-lu - ia! Come let us sing - a joy-ful

56 *f*

I al-le-lu-ia! — Al-le-lu-ia! O sing al - le-lu - ia!

II al-le-lu-ia! — Al-le-lu-ia! O sing al - le-lu - ia!

65

I Joy-ful-ly sing al-le - lu-ia, O sing! Sing al-le - lu - ia!

II Joy-ful-ly sing al-le - lu-ia, O sing!

65