

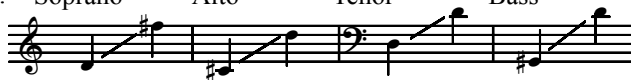
A Joyful Noel

SATB Chorus*, Piano and Flute**

Traditional English Carol
and V. C. J.

Victor C. Johnson
*Quoting THE FIRST NOEL and
JESU, JOY OF MAN'S DESIRING
by J. S. Bach*

Ranges: Soprano Alto Tenor Bass



Peacefully; expressively ♩ = ca. 100

Flute

mp

SA

poco rit. *unis.* *a tempo*

mp

The first No -

TB

mp *poco rit.* *a tempo*

Duration: approx. 2:40

*Also available for SSA (15/1772H), Three-part Mixed (15/1781H) and Two-part (15/1859H).

**Flute part is on page 11.

© 2003 Heritage Music Press, a division of The Lorenz Corporation. All rights reserved. Printed in U.S.A.
Unauthorized reproduction of this publication is a criminal offense subject to prosecution.

THE CCLI LICENSE DOES NOT GRANT PERMISSION TO PHOTOCOPY THIS MUSIC.

10

el the an - gel did say, was to cer - tain poor

14

shep - herds in fields as they lay; In fields where

unis. mp

18

they lay keep - ing their sheep, on a cold win - ter's

22 *p*

night that was so deep. No -

25

el, No - el,

No - el, No -

28 *mp*

el, Born is the King of

6 *mp*

Gradually slowing

31

Is - ra - el.

mf

Gradually slowing

Gradually slowing

mf

Broader ♩ = ca. 84

34

And let us

mf

Broader ♩ = ca. 84

let us

Broader ♩ = ca. 84

molto legato

37

now with hearts full of cheer, bow

simile

3

40

down to the child born so meek and so

3

43

Dear; ——— To the new - born — babe, a —

mp

mp

mp

Detailed description: This block contains the musical notation for measures 43, 44, and 45. It features a vocal line with lyrics, a piano accompaniment, and a bass line. The key signature has two sharps (F# and C#). The vocal line starts with a rest in measure 43, then sings 'Dear;' in measure 44 and 'To the new - born — babe, a —' in measure 45. The piano accompaniment consists of a flowing eighth-note melody in the right hand and a bass line in the left hand. The dynamic marking *mp* (mezzo-piano) is present in measures 44 and 45. There are slurs over the piano accompaniment in measures 44 and 45.

46

song ——— we sing, ——— to pro - claim ——— our

cresc.

cresc.

cresc.

cresc.

Detailed description: This block contains the musical notation for measures 46, 47, and 48. It features a vocal line with lyrics, a piano accompaniment, and a bass line. The key signature has two sharps (F# and C#). The vocal line starts with a rest in measure 46, then sings 'song ——— we sing, ——— to pro - claim ——— our' in measure 47. The piano accompaniment continues with the same eighth-note melody in the right hand and bass line in the left hand. The dynamic marking *cresc.* (crescendo) is present in measures 47 and 48. There are slurs over the piano accompaniment in measures 47 and 48.

49

joy and de - clare him King. No -

f

f

3

52

el, No - el, No - el, No -

f

3

3

55

el, Born is the King of

This system contains measures 55, 56, and 57. It features a vocal line with lyrics, a piano accompaniment, and a bass line. The key signature has two sharps (F# and C#). The vocal line begins with a half note 'el,' followed by quarter notes for 'Born is the King of'. The piano accompaniment consists of eighth-note runs in the right hand and chords in the left hand. The bass line provides harmonic support with quarter and half notes.

58

Is - ra - el, Born is the

This system contains measures 58, 59, and 60. The vocal line continues with 'Is - ra - el,' followed by a long note and then 'Born is the'. The piano accompaniment continues with eighth-note runs and chords. The bass line includes a chromatic descending line in the final measure. The key signature remains two sharps.