

Rockin' in Bethlehem

SATB Chorus and Piano*

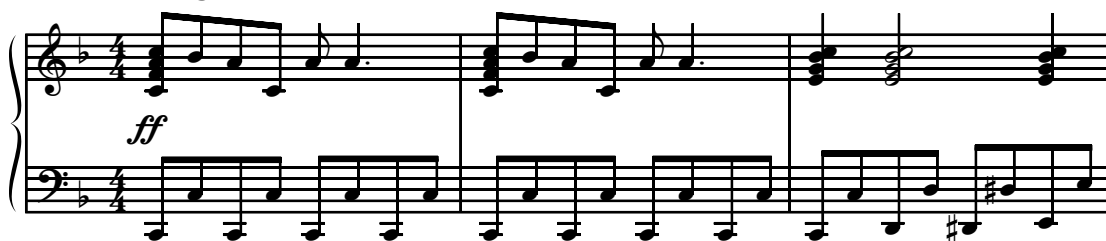
Trad., alt.
Additional lyrics by L.S.

Traditional Spiritual from
Louisiana and Georgia, with the
Traditional, *O Happy Day*
Arranged by Linda Spevacek

Ranges: Soprano Alto Tenor Bass



Driving rock beat ♩ = 160



4

SA *f* *S div.*
O hap - py day! —

TB

Vocal and piano accompaniment for the chorus. It features four staves: two for the vocalists (Soprano/Alto and Tenor/Bass) and two for the piano accompaniment. The vocal parts are marked with *f* (forte) and *S div.* (Soprano/Alto *diviso*). The lyrics "O hap - py day!" are written below the vocal staves. The piano accompaniment continues with the driving rock beat.

Duration: approx. 1:40

*Also available for SSA (15/1906H), TTB (15/1907H), Three-part Mixed (15/1922H),
and Two-part (15/1949H).

© 2004 Heritage Music Press, a division of The Lorenz Corporation. All rights reserved. Printed in U.S.A.
Unauthorized reproduction of this publication is a criminal offense subject to prosecution.

THE CCLI LICENSE DOES NOT GRANT PERMISSION TO PHOTOCOPY THIS MUSIC.

7

O hap - py day! — O hap - py day! —

Detailed description: This system contains measures 7, 8, and 9. The vocal line (treble clef) has lyrics 'O hap - py day!' followed by a long dash, then 'O hap - py day!' followed by another long dash. The piano accompaniment (grand staff) features a steady eighth-note bass line in the left hand and chords in the right hand.

Detailed description: This system shows the piano accompaniment for measures 7-9. The right hand plays chords, and the left hand plays a consistent eighth-note bass line.

10

A babe is born in Beth - le -

Detailed description: This system contains measures 10, 11, and 12. The vocal line (treble clef) has lyrics 'A babe is born in Beth - le -'. The piano accompaniment (grand staff) continues with the eighth-note bass line and chords.

Detailed description: This system shows the piano accompaniment for measures 10-12, maintaining the eighth-note bass line and chordal accompaniment.

13

hem! — Beth-le-hem is rock-in',
B (opt. T)

mf

Detailed description: This system contains measures 13, 14, and 15. The vocal line (treble clef) has lyrics 'hem!' followed by a long dash, then 'Beth-le-hem is rock-in','. Below the lyrics is 'B (opt. T)'. The piano accompaniment (grand staff) features a steady eighth-note bass line and chords. The dynamic marking *mf* is present.

mf

Detailed description: This system shows the piano accompaniment for measures 13-15. The right hand plays chords, and the left hand plays the eighth-note bass line. The dynamic marking *mf* is present.

16

Oo—— it is rock-in',

Oh,—— yeah, it's

TB

19

rock-in'.

There's rock-in' in Beth - le-hem.—

22

mf

mf The lit-tle cra-dle rocks to-night—— in glo - ry,

p *mf*

4

25

in glo - ry, in glo - ry. The lit - tle cra - dle rocks to - night -
 B (opt. T) TB

28

— in glo - ry, the Christ - Child born in glo - ry. Beth - le - hem is
 B (opt. T) B

31

rock - in'. O hap - py day! — O hap - py day! —
 rock - in', Oo, — it is rock - in'.

Oh, ——— yeah, it's rock-in'.

34

SA

O hap - py day!

TB

There's

37

A *sub. mp*

rock-in' in Beth - le-hem. ——— Peace on earth! Mar-y,

T *sub. mp*

sub. mp

40

rock the cra - dle, rock the cra - dle, rock the cra - dle.

B (opt. T)

43 S SA
 Peace on earth! Mar-y, rock the cra - dle, the Christ-Child born in
 T TB

46 Claps *claps continue*
 glo - ry. Beth-le - hem is rock-in', O hap - py day! —
 Oo, — it is

f *f* B (opt. T)

49 rock-in', O hap - py day! — O hap - py day! —
 O hap - py day! — Oh, — yeah, it's rock-in'.

rock-in',

52 SA
There's rock-in' in Beth - le - hem. —
TB

Descant Ah
55 *f* O hap - py day! — O hap - py day! —
f

58 O hap - py day! — (end descant)