

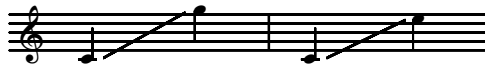
# Rockin' in Bethlehem

Two-part Chorus and Piano\*

Trad., alt.  
Additional lyrics by L.S.

Traditional Spiritual from  
Louisiana and Georgia, with the  
Traditional, *O Happy Day*  
Arranged by Linda Spevacek

Ranges: Part I Part II



Driving rock beat ♩ = 160

4 *f*

I  
II

*f*

O hap - py day! —

O hap - py day! —

Duration: approx. 1:40

\*Also available for SATB (15/1905H), SSA (15/1906H), TTB (15/1907H),  
and Three-part Mixed (15/1922H).

© 2004 Heritage Music Press, a division of The Lorenz Corporation. All rights reserved. Printed in U.S.A.

Unauthorized reproduction of this publication is a criminal offense subject to prosecution.

THE CCLI LICENSE DOES NOT GRANT PERMISSION TO PHOTOCOPY THIS MUSIC.

[www.lorenz.com](http://www.lorenz.com)

7

I O hap - py day! — O hap - py day! —

II O hap - py day! — O hap - py day! —

10

I — A babe is born in Beth - le -

II — A babe is born in Beth - le -

13

*mf* (Opt. unison to m. 31)

I hem! — Beth-le-hem is rock-in',

II hem! —

*mf*

16

I Oh, — yeah, it's

II *mf* Oo, — it is rock-in',

19

I rock-in'. There's rock-in' in Beth - le-hem. —

II There's rock-in' in Beth - le-hem. —

22

I *mf* — The lit-tle cra-dle rocks to-night. — in glo - ry,

II *mf* — The lit-tle cra-dle rocks to-night. — in glo - ry,

*p* *mf*

25

I in glo - ry, in glo - ry. The lit - tle cra - dle rocks to - night—

II in glo - ry, in glo - ry. The lit - tle cra - dle rocks to - night—

28

I — in glo - ry, the Christ—Child born in glo - ry.

II — in glo - ry, the Christ—Child born in glo - ry. Beth - le - hem is

31

I O hap - py day! — O hap - py day! —

II rock - in', Oo, — it is rock - in',

34

I — O hap - py day! — There's

II Oh, — yeah, it's rock-in'. There's

37

I rock-in' in Beth - le-hem. — Peace on earth! Mar-y,

II rock-in' in Beth - le-hem. —

*sub. mp*

40

I rock the cra - dle, rock the cra - dle, rock the cra - dle.

II

43

I

the Christ—Child born in

II *mp*

Peace on earth! Mar-y, rock the cra - dle, the Christ—Child born in

46 Claps *claps continue*

I *f*

glo - ry. O hap - py day!—

II *f*

glo - ry. Beth-le-hem is rock-in', Oo— it is

49

I

O hap - py day!— O hap - py day!—

II

rock-in', Oh,—— yeah, it's rock-in',

52

I  
There's rock-in' in Beth - le-hem. —

II  
There's rock-in' in Beth - le-hem. —

Descant

Ah

55

I  
*f* O hap - py day! — O hap - py day! —

II  
*f* O hap - py day! — O hap - py day! —

*ff*

58

I  
O hap - py day! — (end descant)

II  
O hap - py day! —