

Get on Board!

Rehearsal Prep Sheet: SSA
for use with **Heritage Publication 15/2132H**

Arranged by Earlene Rentz

Key: **G Major**

$\text{♩} = 80-108$

1. **1.** $\text{♩} = 80-108$
Do Ti La So Do Do Re Mi Re Do Do Ti La So Do So So La Do Re Do

2. **2.**
So La Do Do La So So La Do La So La Do So La Do So La Do So La Do Do Do Do So

8 **8** $\text{♩} = 80-108$
La Do Do Do Do Do So La Do Do Do Do Do So La Do Do Do Do Do So

11 **11**
La Do Do Do La So So La Do Do Do Do Do Re Mi Re Do La Do

3. **3.** $\text{♩} = 60-80$
(Syllable or Solfege)

5 **5**
6 **6**
7 **7**

8 **8**
10 **10**
10 **10**

4. **4.** $\text{♩} = 80-108$
(La)

8 **8**
10 **10**
12 **12**

5. **5.** $\text{♩} = 80-108$
SI Oo Oo Get on board, get on board. Get on board!
SII Oo Oo Get on board, get on board. Get on board!
A Oo doo doo, Get on board!

Get on Board!

SSA Chorus and Piano*

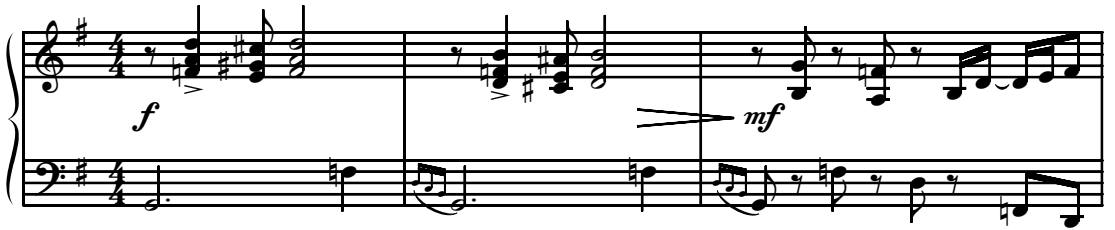
Trad., alt.

African-American Folk Song, *The Gospel Train*
Arranged by Earlene Rentz

Ranges: Soprano I Soprano II Alto



With energy ♩ = 108



4 SI *mf*

The gos - pel train's a - com - in', I

SII *mf*

The gos - pel train's a - com - in', I

A *mf*

The gos - pel train's a - com - in', I

Duration: approx. 1:40

*Also available for Two-part (15/2181H).

© 2006 Heritage Music Press, a division of The Lorenz Corporation. All rights reserved. Printed in U.S.A.
Unauthorized reproduction of this publication is a criminal offense subject to prosecution.

THE CCLI LICENSE DOES NOT GRANT PERMISSION TO PHOTOCOPY THIS MUSIC.

6

hear it close at hand,— I hear the car wheels mov-in', and

hear it close at hand,— I hear the car wheels mov-in', and

hear it close at hand,— I hear the car wheels mov-in', and

8

roll - in' through the land. Get on board, lit-tle chil-dren, Get on

roll - in' through the land. Get on board, lit-tle chil-dren, Get on

roll - in' through the land. Get on board, lit-tle chil-dren, Get on

10

board, lit-tle chil-dren, Get on board, lit-tle chil-dren, There's

board, lit-tle chil-dren, Get on board, lit-tle chil-dren, There's

board, lit-tle chil-dren, Get on board, lit-tle chil-dren, There's

12

room for man-y - a more.

room for man-y - a more. *f* I

room for man-y - a more.