

A Family Christmas Spectacular

Three-part Mixed* Chorus with Piano* or Concert Band**

Various, alt.

Douglas E. Wagner

Incorporating *Over the River and Through the Woods*,
Up on the House-Top, *Jolly Old Saint Nicholas*,
Winter, and *Jingle Bells*

Ranges:

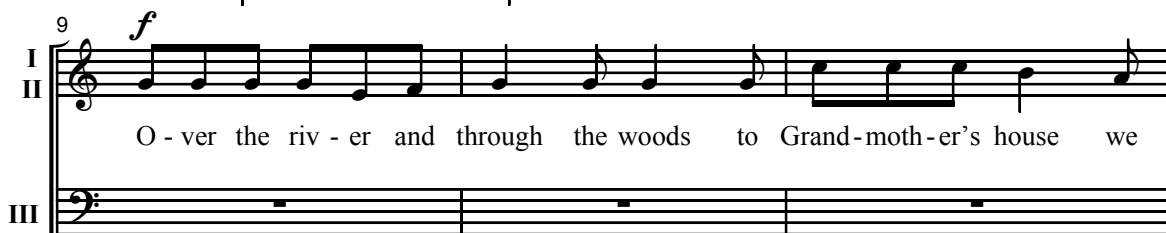
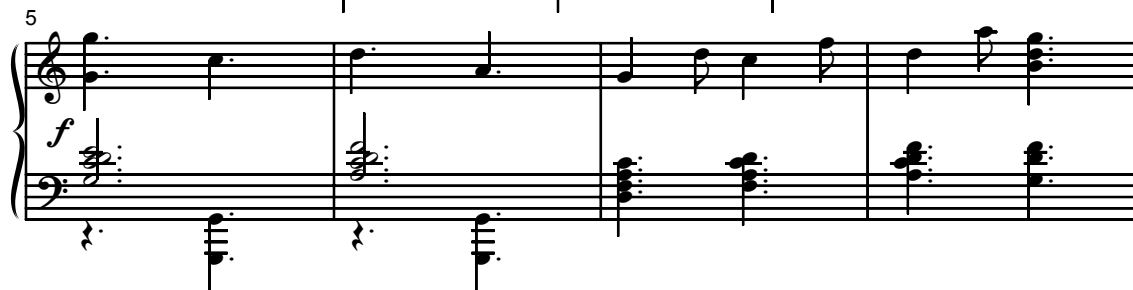
Part I

Part II

Part III



① Joyously; not rushed ♩ = ca. 96-100



Duration: approx. 3:45

* Also available: SATB (15/2366H); SSA (15/2367H); TBB (15/2368H); Two-part (15/2370H); Performance/Accompaniment CD (99/2277H).

** Full score and set of parts for Concert Band are available separately (30/2348H).

© 2008 Heritage Music Press, a division of The Lorenz Corporation. All rights reserved. Printed in U.S.A.

Unauthorized reproduction of this publication is a criminal offense subject to prosecution.

THE CCLI LICENSE DOES NOT GRANT PERMISSION TO PHOTOCOPY THIS MUSIC.

www.lorenz.com

12

I go. The horse knows the way to car - ry the sleigh through the

II

III

15

I white and drift - ed snow. O - ver the riv - er and

II

III *f* O - ver,

18

I through the woods, Oh how the wind does blow. It

II

III through the woods, Oh how the wind does blow. It

21 *rit.* *a tempo*

I stings your toes and bites your nose as o - ver the ground we

II

III *rit.* *a tempo*

stings your toes and bites your nose

rit. *a tempo*

24 $\text{♩} = \text{♩}$ ②

I go.

II

III

f

28

I

II

III *mf*

Up on the house - top rein - deer pause;

mp

31 *mf*

I II

Down through the chim - ney with

III

Out jumps good old San - ta Claus.

34

I II

lots of toys, all for the lit - tle ones' Christ - mas joys.

III

37 *f*

I II

Ho, ho, ho, who would-n't go? Ho, ho, ho,

III

Ho, ho, ho, who would-n't go? — Ho, ho, ho,

mf

40

I
II

who would - n't go? Up on the house - top,

III

who would - n't go? Up on the house - top,

42

I
II

Click, click, click, down through the chim - ney with good

III

Click, click, click, down through the chim - ney with good

rit.

45

3 Freely

I
II

Saint Nick.

III

Saint Nick.

Freely

$\text{♩} = \text{ca. } 88$
mp

48

I
II

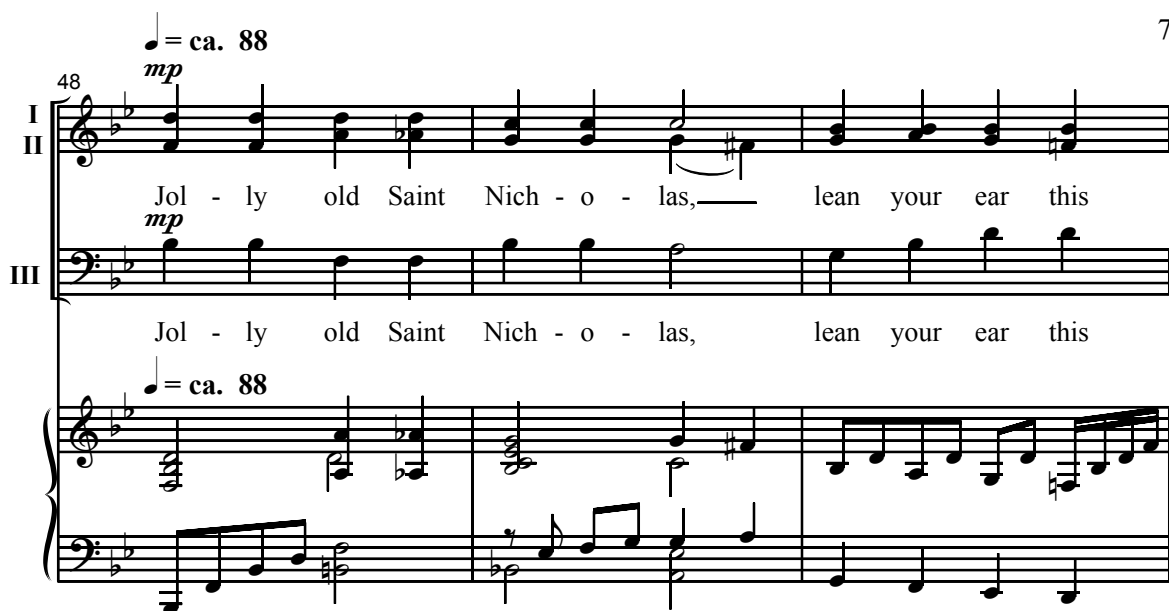
Jol - ly old Saint Nich - o - las, — lean your ear this

mp

III

Jol - ly old Saint Nich - o - las, lean your ear this

$\text{♩} = \text{ca. } 88$



51

I
II

way. — Don't you tell a

III

way. — Don't you tell a



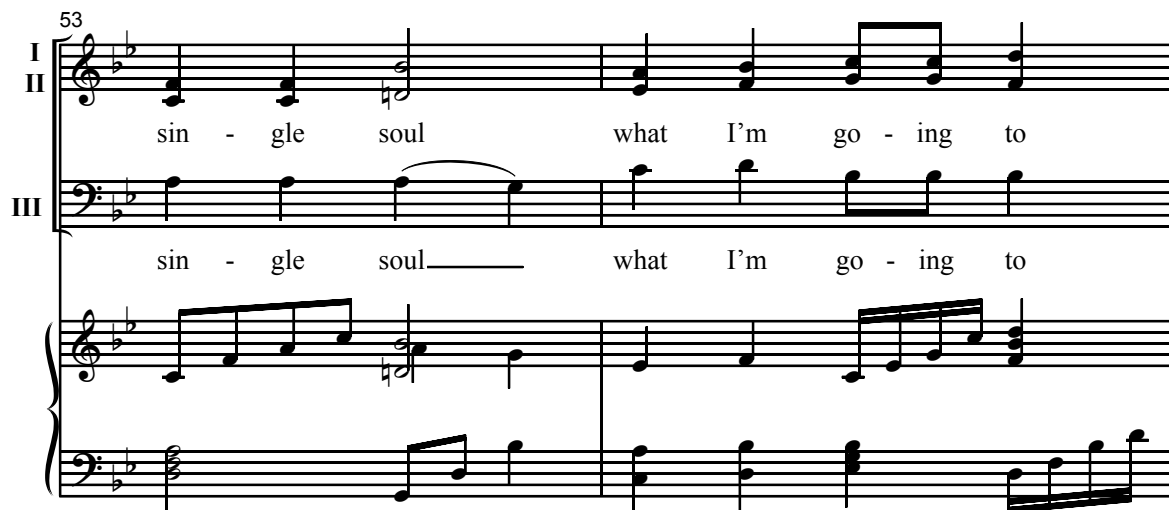
53

I
II

sin - gle soul what I'm go - ing to

III

sin - gle soul — what I'm go - ing to



55 *mf*

I say: Christ - mas Eve is

II

III say: Christ - mas Eve is

mp

57

I com - ing soon, now you dear old

II

III com - ing soon, now you dear old

59 *poco rit.*

I man. Whis - per what you'll bring to me. *poco rit.*

II

III man. Whis - per what you'll bring to me. *poco rit.*