

15/3912H

SAB



When You Walk That Lonesome Valley

ARRANGED BY

Douglas E. Wagner

Also available:

Downloadable Accompaniment MP3
(e99/4509H)

HERITAGE
MUSIC PRESS

When You Walk That Lonesome Valley

SAB and Piano with opt. B-flat Clarinet or C-Instrument*

Traditional American Spiritual
Arranged by Douglas E. Wagner

Slowly, with expression ♩ = ca. 52

Piano introduction in B-flat major, 4/4 time. The music is marked *mp* (mezzo-piano). It begins with a single eighth note in the right hand, followed by a series of eighth and sixteenth notes in both hands, creating a gentle, expressive melody.

Vocal entry for Soprano (SA) and Bass (B). The Soprano part begins with a whole note rest, followed by a half note G4, and then a quarter note A4. The Bass part begins with a whole note rest, followed by a half note G3, and then a quarter note A3. The lyrics are: "When you walk that lone-some". The music is marked *mp* (mezzo-piano) and *a tempo*.

Piano accompaniment for the vocal entry. It features a triplet of eighth notes in the right hand, followed by a half note G4, and then a quarter note A4. The left hand plays a steady eighth-note accompaniment. The music is marked *poco rit.* (poco ritardando) and *a tempo*.

Vocal continuation for Soprano (SA) and Bass (B). The Soprano part begins with a half note G4, followed by a quarter note A4, and then a half note B4. The Bass part begins with a half note G3, followed by a quarter note A3, and then a half note B3. The lyrics are: "val - ley, — you have to walk it by your -". The music is marked *mp* (mezzo-piano).

Piano accompaniment for the vocal continuation. It features a steady eighth-note accompaniment in both hands. The music is marked *mp* (mezzo-piano).

Duration: approx. 2:45

*B-flat Clarinet part is on page 7; C-Instrument part is on page 8.

© 2023 Heritage Music Press, a division of The Lorenz Corporation. All rights reserved. Printed in U.S.A.

Unauthorized reproduction of this publication is a criminal offense subject to prosecution.

Copying this music is illegal. A license from CCLI or One License does not grant permission to copy.

www.lorenz.com

7 *mf* 3
Oh, no - bod - y else _____ can walk it
self. *mf* 3
No - bod - y else can walk it

9 *poco rit.* *a tempo*
for you. _____ You have to walk _____ it by your-self.
for you. _____ You have to walk it by your-self.

12 *mp*
Oh, we must walk _____
mp
We must walk _____ that lone - some

20 *rit.* *mf*

selves. When you *mf*

selves.

mf *rit.*

22 *a tempo*

walk that lone-some val - ley, you have to

a tempo

24 *f*

walk it by your - self. Oh,

walk it by your, walk by your-self. Oh,

walk it by your - self.

f

26 *f* *3* no-bod - y else — can walk it for you. — You have to

No-bod - y else can walk it for you. — - clar.

28 *mf* *poco rit.* **Freely** walk — it by your - self. *mp*

You have to walk it by your - self. **Freely** + clar. You have to

30 *mp* *rit.* You have to walk it by your - self.

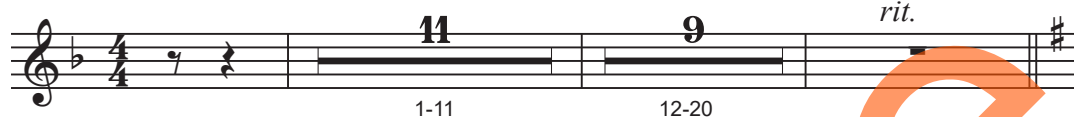
walk it by your - self, walk by your - self.

B \flat Clarinet

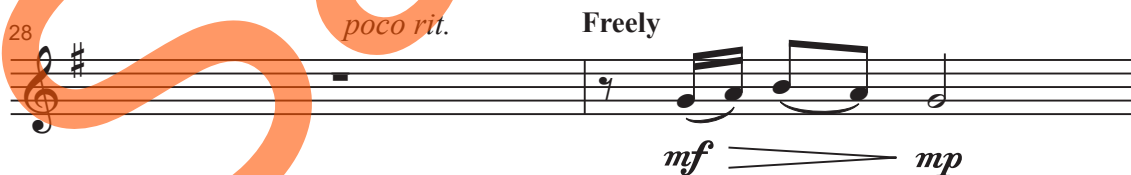
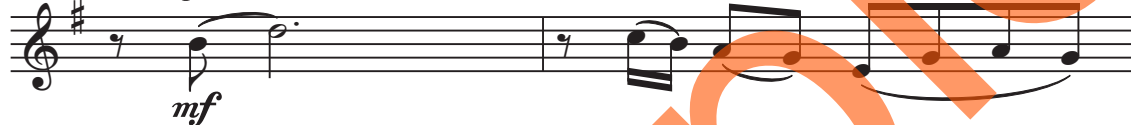
When You Walk That Lonesome Valley

Traditional American Spiritual
Arranged by Douglas E. Wagner

Slowly, with expression ♩ = ca. 52



22 *a tempo*





C-Instrument

When You Walk That Lonesome Valley

Traditional American Spiritual
Arranged by Douglas E. Wagner

Slowly, with expression ♩ = ca. 52

