

# Joshua Fit the Battle of Jericho

TB Chorus and Piano\*

Trad., alt.

Traditional Spiritual  
Arranged by Brad Printz

Ranges: T B

13 Spirited swing ♩ = 132-138 (♩ =  $\overset{\frown}{\underset{\frown}{\text{♩}}}$ )

T Spoken: *mp*  
Josh-ua!

B Spoken: *mp*  
Josh-ua!

Spirited swing ♩ = 132-138 (♩ =  $\overset{\frown}{\underset{\frown}{\text{♩}}}$ )

*mf* *mp*

5 *mf*  
Josh - ua fit the bat - tle of \_\_\_ Jer - i - cho, \_\_\_ Jer - i - cho, \_\_\_

*mf*  
Josh - ua fit the bat - tle of \_\_\_ Jer - i - cho, \_\_\_ Jer - i - cho, \_\_\_

*mf*

Duration: approx. 2:25

\*Also available for Three-part Mixed (15/1365H) and Two-part Treble (15/1348H).

8

Jer - i - cho, \_\_\_ Josh - ua fit the bat - tle of \_\_\_ Jer - i - cho, \_\_\_ and the

Jer - i - cho, \_\_\_ Josh - ua fit the bat - tle of \_\_\_ Jer - i - cho, \_\_\_ and the

11

(14)

walls came tum-ba-lin' down. You can talk a - bout the kings of

walls came tum-ba-lin' down.

15

Gid - e - on, \_\_\_ But there's

You can talk a - bout the man of Saul, \_\_\_ But there's

\*The cued notes maybe sung if range is an issue. The lower notes are preferred.

18

8 none like that good old Josh - u - a at the bat - tle of Jer - i - cho!\_

none like that good old Josh - u - a at Jer - i - cho!\_ \*

21

15

8 *mp* Josh - ua fit the bat - tle of\_

*mp* Josh - ua fit the bat - tle of\_

*mp*

24

8 Jer - i - cho, Jer - i - cho, Jer - i - cho,

Jer - i - cho, Jer - i - cho, Jer - i - cho,

\*If range is an issue, the basses may sing with the tenors beginning with measure 19, beat 4.

27 *cresc.* *mf*

Josh - ua fit the bat - tle of \_\_\_ Jer - i - cho, \_\_\_ and the

*cresc.* *mf*

Josh - ua fit the bat - tle of \_\_\_ Jer - i - cho, \_\_\_ and the walls came tum - ba - lin'

*cresc.* *mf*

30 16 *decesc.*

walls came tum - ba - lin' down! And the walls came tum - ba - lin'

*decesc.* *mp*

down! And the walls came tum - ba - lin' down! Up

*decesc.*

**With energy**

33 *p*

down! "Go

to the walls of Jer - i - cho, \_\_\_ he marched with a spear in hand, "Go

**With energy**

*p*

# Agnus Dei

TB Chorus with Descant and Piano

Traditional Latin

Victor C. Johnson

Ranges: T B Descant

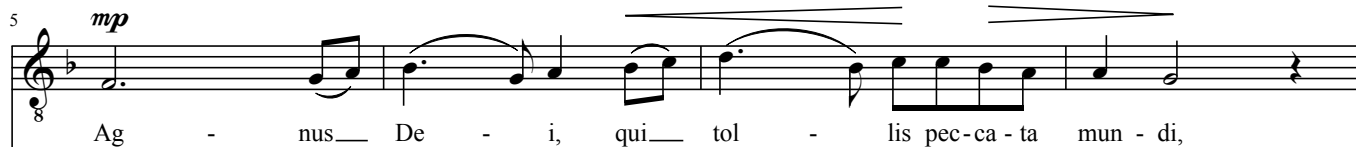


20 Gently ♩ = 88

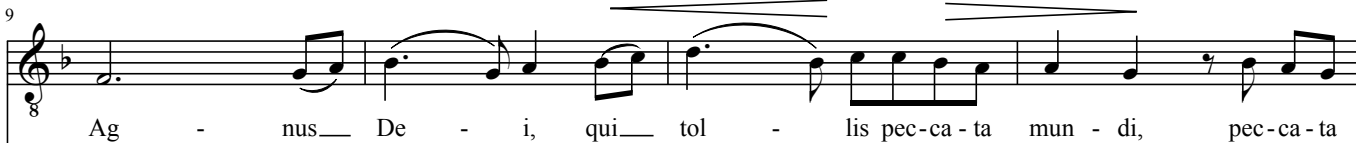
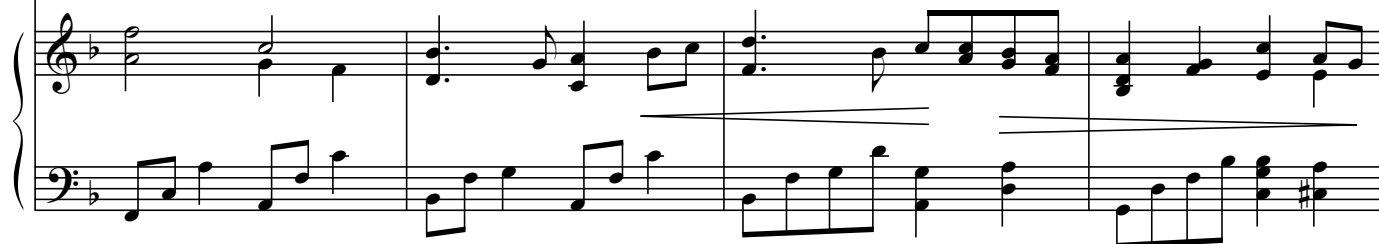


All voices

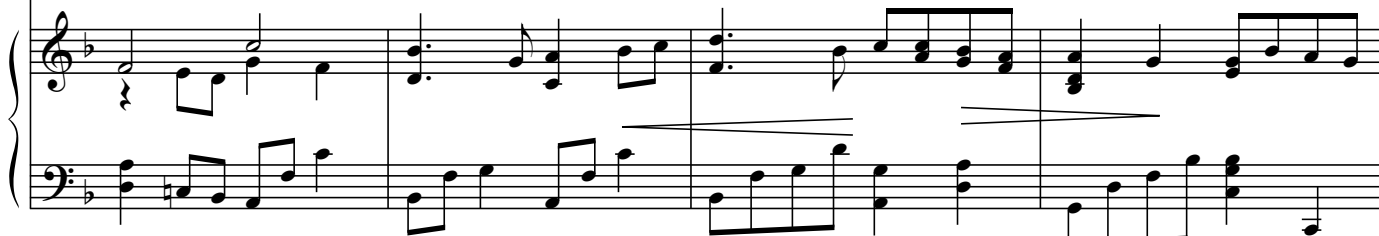
mp



Ag - nus De - i, qui tol - lis pec-ca - ta mun - di,



Ag - nus De - i, qui tol - lis pec-ca - ta mun - di, pec-ca - ta



Duration: approx. 2:10

13 (21) *poco rit. mp a tempo*

8 mun - di. Ag - nus De - i, qui -

mun - di. Ag - nus De - i, qui -

*poco rit. mp a tempo*

17

8 tol - lis pec - ca - ta mun - di, Ag - nus -

tol - lis pec - ca - ta mun - di, Ag - nus -

20

8 De - i, qui - tol - lis pec - ca - ta mun - di, pec - ca - ta

De - i, qui - tol - lis pec - ca - ta mun - di, pec - ca - ta

*con moto*

*mf*

22

23

mun - di. Mi - se - re - re,

mun - di. Mi - se - re - re,

*mf con moto*

26

mi - se - re - re, mi - se - re - re no - bis.

mi - se - re - re, mi - se - re - re no - bis.

23

*f rit.*

*f rit.*

*f rit.*

29

Mi - se - re - re, mi - se - re - re no - bis, no -

Mi - se - re - re, mi - se - re - re no - bis, no -

32 *mf a tempo*

8 bis. Ag - nus De - i, qui

8 bis. Ag - nus De - i, qui

*mf a tempo*

35

8 tol - lis pec - ca - ta mun - di, Ag - nus

8 tol - lis pec - ca - ta mun - di, Ag - nus

38 (24) *mp*

8 De - i, qui tol - lis pec - ca - ta mun - di, pec - ca - ta

8 De - i, qui tol - lis pec - ca - ta mun - di, pec - ca - ta

*mp*

*mp*