

THE SACRED MUSIC PRESS • BOX 802, DAYTON, OHIO 45401-0802

BE THOU MY VISION

JEFFREY H. RICKARD

Based on the Irish tune SLANE

Text: Irish, c. 700 A.D.

Translated by Mary E. Byrne (1880-1931)

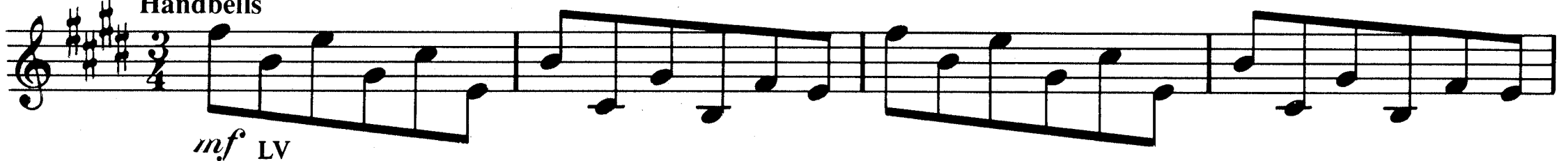
Versified by Eleanor H. Hull (1860-1935)

For the Chapel Singers of the University of Redlands — Redlands, California

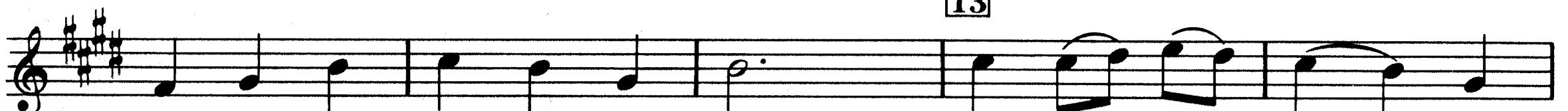
Bells Used: 9 (11)

**With great calm** (♩ = 60)

Handbells

*Handbells continue this pattern until m. 31***5** Treble Voices*mf* (unis.)

Be thou my— Vi - sion. O Lord of my heart; Naught be all

13

else to me, save that thou art; Thou my— best— thought— by

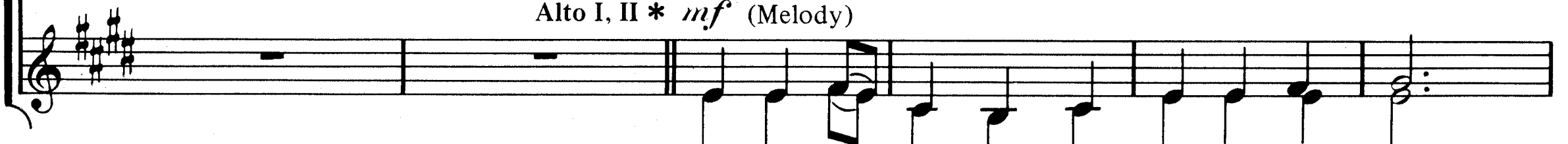


day or by night. — Wak-ing or sleep-ing, thy— pres-ence my light.

23 Soprano I, II **mf*

(Handbells)

Be thou my— Wis-dom, and thou my true— Word;

Alto I, II * *mf* (Melody)

* These parts may be assigned to Soprano, Alto, Tenor and Baritone if preferred.

© MCMXC The Sacred Music Press

All Rights Reserved. Printed in the U.S.A.

S-475-1

REPRODUCTION OF THIS PUBLICATION WITHOUT PERMISSION OF THE PUBLISHER IS A CRIMINAL OFFENSE SUBJECT TO PROSECUTION