

# Cradle Song

SATB

Stanzas 1-2, *Little Children's Book for Schools and Families*, c. 1885

Roger Summers

Stanza 3, Gabriel's *Vineyard Songs*, 1892, and R.S.

Gently flowing ♩ = 48

mf p

The piano introduction consists of two staves. The right hand plays a melody of eighth notes with a slur, starting on G4 and moving up to D5. The left hand plays a similar eighth-note pattern, starting on G3 and moving up to D4. The music is in 6/8 time and G major. Dynamics are marked *mf* and *p*.

5 SA *mp*

TA - way in a man - ger, no  
The cat - tle are low - ing, the

TB

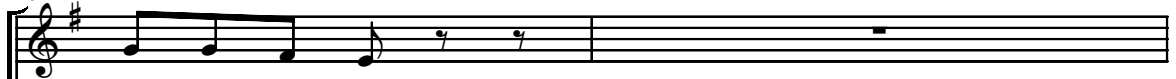
The vocal parts (SA and TB) enter at measure 5. The Soprano and Alto parts have a melodic line with a slur. The Tenor part has a similar line. The piano accompaniment continues with eighth-note patterns in both hands. Dynamics are marked *mp*.

8

crib for his bed, The lit - tle Lord Je - sus laid  
poor ba - by wakes, But lit - tle Lord Je - sus, no

The vocal parts continue with the lyrics. The piano accompaniment continues with eighth-note patterns. Dynamics are marked *mp*.

4  
10

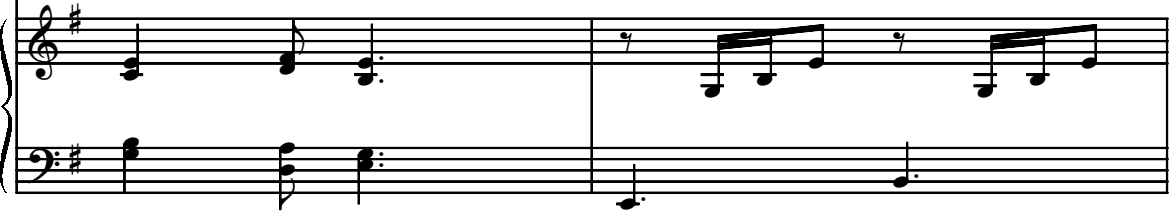


down his sweet head.  
cry - ing he makes.

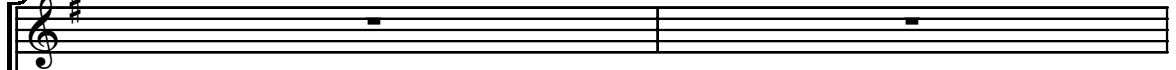
*mp*



The stars in the bright sky looked  
I love thee, Lord Je - sus, look



12



down where he lay, The lit - tle Lord Je - sus a -  
down from the sky, And stay be my side un - til



14

*mf*

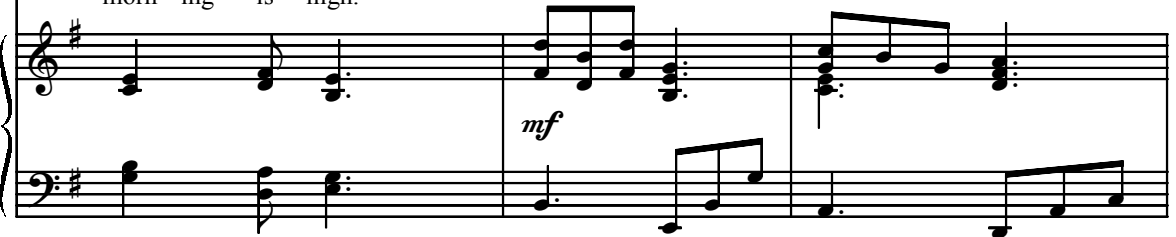


Born in a man - ger of hay,

sleep in the hay.  
morn - ing is nigh.



*mf*



17

He came to show us the way \_\_\_\_\_ to—

20

love. \_\_\_\_\_ The —

1. *mp* 2.

1. *p* 2.

23

*rit.* **Rubato** *p*

Be near me, Lord Je - sus; I

*rit.* **Rubato**

26

ask thee to stay Close by me for - ev - er and love me, I pray. Bless

29

all the dear chil - dren in thy ten - der care, And fit us for heav - en to

32

*poco rit.* **Tempo I**  
*mf*

live with thee there. Born in a man - ger of hay, ———

*poco rit.* **Tempo I**  
*mf*