



A Lorenz Company • www.lorenz.com

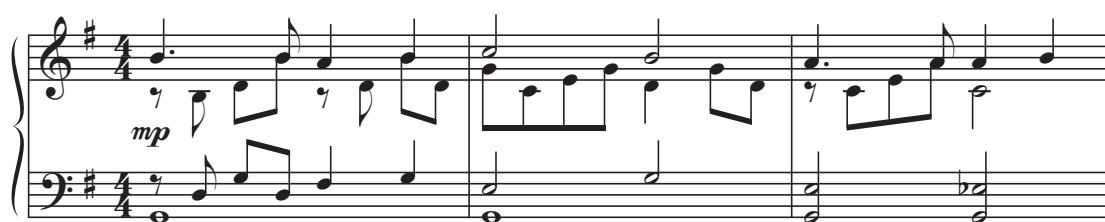
Remember to Remember

Words and Music by

Pepper Choplin

Quoting **HOLY IS THE LORD**
by **Franz Schubert** (1826)

With a sense of worship ♩ = 80



4 SA *rit.* *mp a tempo*

Lord, still our souls 'til we let

TB *mp*

rit. *mp a tempo*

© 2013 Lorenz Publishing Company, a division of The Lorenz Corporation. All rights reserved. Printed in U.S.A.

Reproduction of this publication without permission of the publisher is a criminal offense subject to prosecution.

THE CCLI LICENSE DOES NOT GRANT PERMISSION TO PHOTOCOPY THIS MUSIC.

7



go all that crowds the mind, all that's draw - ing our

10



hearts a - way from You.

13



Break our rou - tine, help us see the great

mp

16 *mf*

pow - er_ of this thing we do, make our mo-tives true.

mf

19

Help us re-mem - ber_____ to re-mem - ber You.

mf

22 *rit.*

rit.

Slower, with intimacy ♩ = ca. 72

25 *mp*

Music for measures 25-27. The vocal line is in treble clef with a key signature of three flats (B-flat, E-flat, A-flat). The lyrics are: "We come to wor-ship on this day, our minds may wan-der, so". The piano accompaniment is in bass clef with the same key signature. The tempo/mood is "Slower, with intimacy" and the tempo is "ca. 72". The dynamic is *mp*.

Slower, with intimacy ♩ = ca. 72

mp

Piano accompaniment for measures 25-27. The music is in bass clef with a key signature of three flats. It consists of chords and moving lines in both hands.

28

Music for measures 28-29. The vocal line continues with the lyrics: "far a - way. Some-times in wor - ship, we". The dynamic is *mf*. There is a crescendo hairpin over measure 29.

mf

Piano accompaniment for measures 28-29. The music continues in bass clef with a key signature of three flats. The dynamic is *mf*.

30

Music for measures 30-31. The vocal line continues with the lyrics: "go through the mo - tions with - out an - y no - tion of why we gath - er". The dynamic is *mf*. There is a crescendo hairpin over measure 31.

Piano accompaniment for measures 30-31. The music continues in bass clef with a key signature of three flats. The dynamic is *mf*.