

LET US REJOICE, CHRIST IS BORN!

Words and Music by
DAVID BAILES
 Arr. by Mary McDonald

Festive ♩ = 56

1

N.C.

LADIES unison

9

mf

Lis - ten and hear — all the songs of good - will.

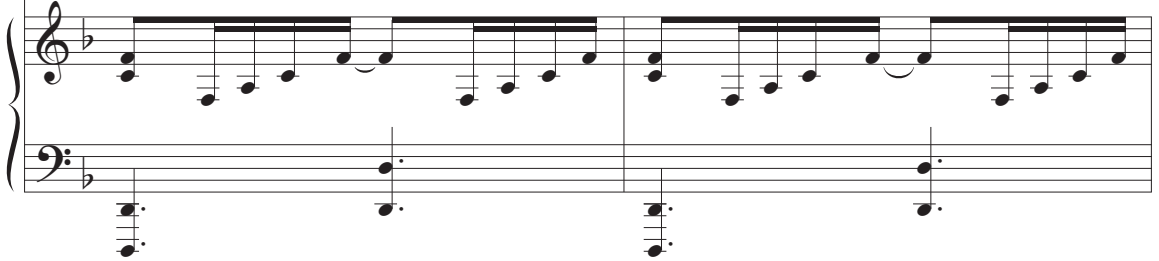
F²

11



Look now and see — as our hope is ful - filled. —

F²
D

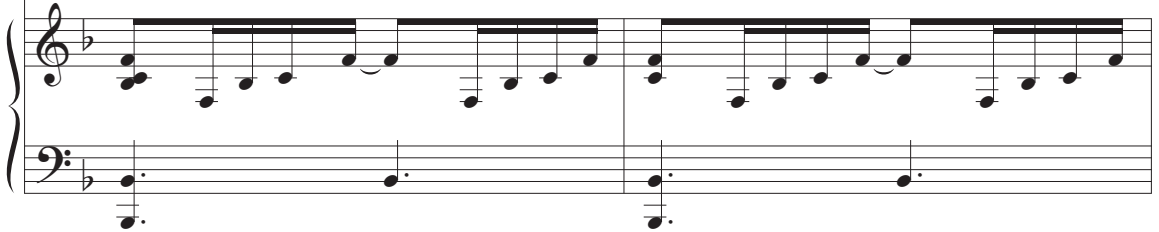


13

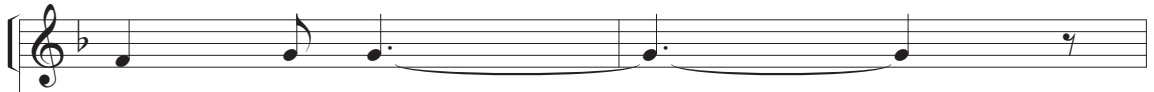


In - to the dark - ness, a new Light now shines for a

F²
B^b



15



world in need. —

Csus

B^b2
G

F
B^b

C

Fsus
C



17
add MEN unison
mf
 Light of the—

Je - sus has come;— He's the Light of the World.

17 F²

19
 World. Sav - ior and—

Prom - ised to us,— He's our Sav - ior and— Lord.

19 F²
 D

21 *div.*
 Lord. Ones who be -

Bring - ing His joy— to the ones who be - lieve, He's the

21 F²
 B^b

2

23

lieve, Prince of Peace.

Prince of Peace.

23

Fsus
C

C *B^bsus*
D

C E F D C

25

f

Let us re - joice, — for a Ba - by has come;

div.

25

B^b2

f

F2 F

27

born on this Christ - mas, He's God's on - ly Son.

27

B^b2

F2 F

29

Let the bells ring; lift your voice and sing to the

29

B \flat 2 F \flat 2 D F D

31

new - born King!

31

Fsus C C B \flat G Dm B \flat C

33 *mf unis.*

Join with the an - gels in ju - bi - lant song.

unis.

33

F2

mf

35

Come with the shep - herds; bow hum - bly in awe.—

Detailed description: This system contains the first two staves of music. The top staff is a vocal line in a treble clef with a key signature of one flat (Bb). The lyrics are "Come with the shep - herds; bow hum - bly in awe.—". The bottom staff is a piano accompaniment in a bass clef, featuring a steady eighth-note accompaniment.

35

F²
D

Detailed description: This system shows the piano accompaniment for the first system. The right hand (treble clef) plays chords and moving lines, while the left hand (bass clef) provides a simple harmonic accompaniment. Chord symbols F² and D are indicated above the first two measures.

37

Seek with the wise - men this One who will of - fer—

Detailed description: This system contains the third and fourth staves of music. The vocal line continues with the lyrics "Seek with the wise - men this One who will of - fer—". The piano accompaniment continues with the same eighth-note pattern.

37

F²
B^b B^{b2}

Detailed description: This system shows the piano accompaniment for the second system. Chord symbols F², B^b, and B^{b2} are indicated above the first, second, and third measures respectively.

39

3

div.

life with Him!

Detailed description: This system contains the fifth and sixth staves of music. The vocal line has a fermata over the words "life with Him!". A circled number "3" is placed above the first measure. The word "div." is written above the second measure. The piano accompaniment features a longer note value in the right hand.

39

F^{sus} C D

Detailed description: This system shows the piano accompaniment for the third system. Chord symbols F^{sus}, C, and D are indicated above the first, second, and third measures respectively.

41 *f unis.*

Long a - go, proph - ets fore - told of His birth:

Fore - told of His

41 G^2

43 Prom - ised Mes - si - ah would come to the earth.

birth:

would come to the

43 G^2
E G
D

45

45 Won - der - ful, Coun - sel - or, Al - might - y God, sent to

earth.

The Al - might - y

45 G^2
C

47 *div.*
 save the world!

God, save the world!

47 Dsus D C²/_E D F# C²/_E D

49 Let us re - joice, — for a Ba - by has come;

49 C² G²

51 born on this Christ - mas, He's God's on - ly Son.

51 C² G²

53

Let the bells ring; lift your voice and sing to the

53 C² G²/_E G/_E

55

new - born King!

55 Dsus D Em Bm C G

mf

58

Hark, the her - ald an - gels sing:

58 Am Em D B/D# Em D/E Em Bm

mf

61

“Glo - ry to the new - born King!” Lift your voice and

unis.

61

Em D/C C Em D⁹/_E Em

64

sing, for Christ is born!

div.

64

D/C C Dsus D D^{sus}/_E D_{F#}

67 *mp* *unis.*

Let us re - joice, — for a Ba - by has come;

unis.

67

C² G² G

mp