

REDEEMING LOVE HAS BEEN MY THEME

Words by
WILLIAM COWPER, 1731-1800

Music by
MARTY PARKS
Arr. by Marty Parks

With awe and wonder ♩ = 72

1 Em D/E Em D(no3)/E

mp

3 Em D/E Em D(no3)/E

5 CHOIR unison mp

There is a foun-tain filled with blood

5 Em² Em Bm⁷

© 2020 Lorenz Publishing Company, a division of The Lorenz Corporation. All rights reserved. Printed in U.S.A.
Reproduction of this publication without permission of the publisher is a criminal offense subject to prosecution.
THE CCLI LICENSE DOES NOT GRANT PERMISSION TO PHOTOCOPY THIS MUSIC.
www.lorenz.com

drawn from Im - man - uel's veins.

7 Em² Em Bsus B7

9 And sin - ners, plunged be - neath that flood,

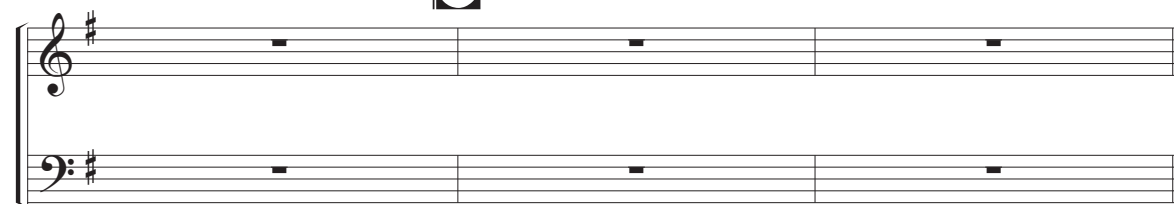
9 Em² Em Bm⁷

11 2 lose all their guilt - y stains, lose all their guilt - y

11 Em² Em Bsus B7 C Cmaj⁷ D Dsus⁴ D

21

3



21

Em

D(no3)
E

Em

D
E

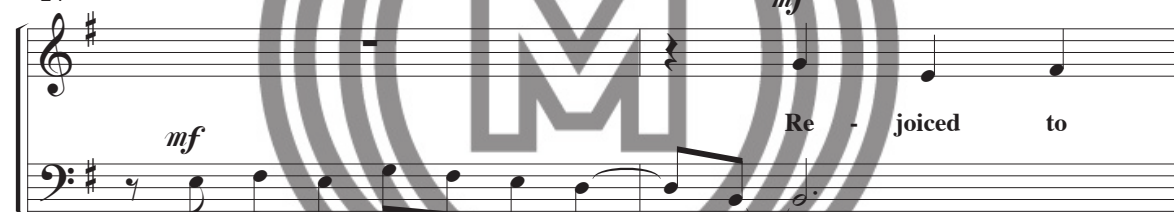
Em

D(no3)
E

24

*mf**mf*

Re - joiced to



The dy - ing thief re - joiced to see

24

Em

Bm⁷

26

see

in his day.



that foun - tain in his day.

26

Em

B⁷_{sus}B⁷

28

Though vile as

And there may I, though vile as — he, —

28

Em

Bm⁷

he, wash all my sins a - way,

wash all my sins a - way,

30

4

he, wash all my sins a - way,

wash all my sins a - way,

30

Em

B⁷_{sus}B⁷

wash all my sins a - way,

wash all my sins a - way,

32

div.

wash all my sins a - way,

wash all my sins a - way,

32

C

Cmaj⁷

D

Dsus⁴/₂

D

G

Gmaj⁷

Em

Em⁷

wash all my sins a - way,

wash all my sins a - way,

34

wash all my sins a - way.

34 Am Am G Am F# B⁷_{sus} B

36 *unis.*
And there may I, though vile as he,
unis.

36 Em Em D Cmaj⁷

38 wash all my sins a - way.

38 Am Bm⁷ Em D E

10/5405MD - 8

40

5

40 Em D(no3) E Fm Cm7 Fm Eb(no3) C

43 *f* E'er since by faith I saw the stream

43 Fm Cm7

45 Thy flow - ing wounds sup - ply,

45 Fm C7sus C7 C7/G

10/5405MD - 9

53

and shall be till I die.

53 Bbm Bbm A \flat Bbm G C7sus C7

55 *mf* *unis.* Re - deem - ing love has been my theme, *unis.*

55 Fm Fm Eb D \flat maj7

57 7 slight rit.

and shall be till I die.

57 Bbm Cm7 Fm Eb F Fm Eb(no3) F

slight rit.

60 *mp* *slight rit.*

Re - deem - ing love has been my _____ theme, _____

60 *Fm* *Fm* *Dbmaj⁷* *mp* *slight rit.*

62 *div.* *and* *shall* *be* *till* *I* *die.*

62 *Bbm* *Ebm* *Bbm⁷* *Cm⁷* *Fm* *Ebm* *F*

65 *rit.*

65 *Fm* *Ebm(no3)* *F* *Fm* *rit.*

MEDALLION MUSIC REVIEW ONLY