

# Alleluia! Alleluia! Let the Holy Anthem Rise

SATB and Organ with opt. Congregation and opt. Trumpet

Edward Caswall

Anthony Giamanco  
(after his original hymn tune ST. MARY)

**Boldly** ♩ = 96-100  
Full to Mix.

*f*  
Ped.

*poco rall.*

THE  
Sacred  
MUSIC PRESS

(+ Congregation)  
*a tempo*

*f*

1. Al - le - lu - ia! Al - le - lu - ia! Let the ho - ly

MUSIC PRESS

- Mix.

*a tempo*

REVIEW ONLY

© 2020 The Sacred Music Press, a division of The Lorenz Corporation. All rights reserved. Printed in U.S.A.  
Reproduction of this publication without permission of the publisher is a criminal offense subject to prosecution.  
COPYING THIS MUSIC IS ILLEGAL. A LICENSE FROM CCLI OR ONELICENSE DOES NOT GRANT PERMISSION TO COPY.  
www.lorenz.com

12

an - them\_ rise, and the choirs of heav - en chant it

15

in the tem - ple of the skies; *mf* Let the moun - tains

*mf*

18

skip with glad - ness and the joy - ful - val - leys ring

21 *f*

with ho - san - nas in the high - est to our Sav - ior\_

*f*

Detailed description: This block contains the first system of music, measures 21-23. It features a vocal line in the upper staff and a piano accompaniment in the lower staff. The vocal line begins with a forte (*f*) dynamic and contains the lyrics 'with ho - san - nas in the high - est to our Sav - ior\_'. The piano accompaniment consists of chords and moving lines in both hands.

*f*

Detailed description: This block shows the piano accompaniment for measures 21-23. It includes the right and left hand staves with various chordal textures and melodic fragments.

24 Trumpet *f*

and our King

**THE Sacred MUSIC PRESS**

+ Mix.

Detailed description: This block contains the second system of music, measures 24-26. It includes a trumpet part in the upper staff, a vocal line in the middle staff, and a piano accompaniment in the lower staff. The vocal line has the lyrics 'and our King'. A large, semi-transparent watermark reading 'THE Sacred MUSIC PRESS' is overlaid across the center of the page. The piano accompaniment includes a '+ Mix.' marking.

27

Detailed description: This block contains the third system of music, measures 27-29. It features a vocal line in the upper staff and a piano accompaniment in the lower staff. The piano accompaniment includes a repeat sign and a fermata over a chord.

30 *rall.*  
*mp*

(- Congregation)  
**Meno mosso, poco rubato**

33 *mp*  
 (a cappella)  
 2. Al - le - lu - ia! Al - le - lu - ia! Like the rose from

36 out the wave. He has ris - en up in tri - umph

39 from the dark - ness of the grave. He's the splen - dor

42 *f* *mf*

of the na - tions, He's the lamp of end - less day;

45

He's the ver - y Lord of glo - ry who is ris - en

48 *poco rall.* *f* *mf*

up to day.

Tempo I (♩ = 96-100) Trumpet

MUSIC PRESS

REVIEW ONLY

Tempo I (♩ = 96-100)

*poco rall.* *f*

51

*cresc.* *rall.*

54 **Broadly** ♩ = 84-88

**THE**

**Sacred**

**MUSIC PRESS**

**REVIEW ONLY**

*ff*

Sop. (descant) *ff*

3. Al - le - lu - ia! Al - le -

A1B unison (+ Congregation) *ff*

3. Al - le - lu - ia! Al - le - lu - ia! Bless - ed Je - sus,

**Broadly** ♩ = 84-88

+ Reeds *ff*

57

lu - ia! Al - le - lu - ia! Al -  
make us rise from the life of this cor - rup - tion

# THE

60

to the life that nev - er dies



63

Sop. (descant) *ff*

Alto

be our por - tion, when the days of time are past, Al - le -

Piano accompaniment for measures 63-65, featuring a right-hand melody and a left-hand bass line.

THE

66

Vocal line for measure 66, showing a descant for Soprano and a line for Alto.

lu - ia! Al - le -

ATB unison (+ Congregation)

MUSIC PRESS

and the dead shall be a-wak - ened by the trum - pet's...

Piano accompaniment for measures 66-68, featuring a right-hand melody and a left-hand bass line.

REVIEW ONLY



69

lu - ia!

might - y blast.

72

**THE**

**Sacred**

**MUSIC PRESS**

**REVIEW ONLY**

74

*rit.*

SA (- Congregation)

*rit.*

Al - le - lu - ia,

al - le - lu -

TB

*rit.*

THE

76

*ia!*

MUSIC PRESS

REVIEW ONLY

+ 32

# Alleluia! Alleluia! Let the Holy Anthem Rise

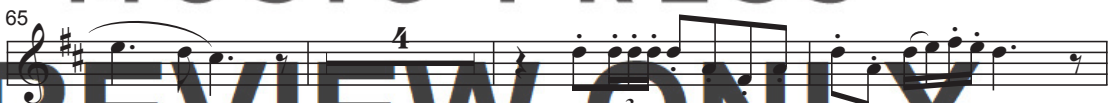
B $\flat$  Trumpet

Edward Caswall

Anthony Giamanco

(after his original hymn tune ST. MARY)

**Boldly**  $\text{♩} = 96-100$



© 2020 The Sacred Music Press, a division of The Lorenz Corporation. All rights reserved. Printed in U.S.A.

Reproduction of this publication without permission of the publisher is a criminal offense subject to prosecution.

COPYING THIS MUSIC IS ILLEGAL. A LICENSE FROM CCLI OR ONELICENSE DOES NOT GRANT PERMISSION TO COPY.

[www.lorenz.com](http://www.lorenz.com)