

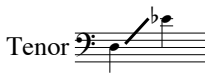
# How Can I Stop Singing My Song?

SATB and Piano\*

C.G.

Cynthia Gray

Ranges:



**Maestoso** ♩ = 92

**Vigoroso** ♩ = 144

8<sup>th</sup> TB *mf*

How can I keep from

sing - ing When the mu - sic fills my soul?

Duration: approx. 2:15

\*Also available for SSA (15/1343H) and Three-part Mixed (15/1344H).

© 1998 Heritage Music Press, a division of The Lorenz Corporation. All rights reserved. Printed in U.S.A.

Reproduction of this publication without permission of the publisher is a criminal offense subject to prosecution.

SA *mf*

How can I keep from sing - ing when the rhy - thm takes con -

TB

16

trol? Like a deep and wind - ing riv - er, it

*unis.*

16

(♩ = ♩)

*f*

runs and o - ver - flows, \_\_\_\_\_ So how can I stop? How can I stop

*f*

(♩ = ♩)

*f*

3

sing-ing my song?

3

*decresc.* *mf*

Detailed description: This system contains the first vocal phrase. The vocal line starts with a treble clef, a key signature of one flat (B-flat), and a 2/4 time signature. It features a triplet of eighth notes (F4, G4, A4) followed by a whole note chord (F4, B-flat4). The piano accompaniment begins with a bass clef, a key signature of one flat, and a 2/4 time signature. It includes a triplet of eighth notes (F3, G3, A3) and a whole note chord (F3, B-flat3). The piano part then transitions to a 4/4 time signature and features a series of chords with a decrescendo marking and a mezzo-forte (mf) dynamic.

27 *unis. mf*

How can I keep from sing - ing when the

*unis. mf*

27 *mp*

Detailed description: This system contains the second vocal phrase. The vocal line starts with a treble clef, a key signature of one flat, and a 4/4 time signature. It begins with a rest for two measures, followed by a melodic line starting on G4. The piano accompaniment starts with a bass clef, a key signature of one flat, and a 4/4 time signature. It begins with a rest for two measures, followed by a rhythmic accompaniment of eighth notes. A mezzo-piano (mp) dynamic is indicated. A box containing the number 27 is placed above the piano part.

mu - sic stirs my heart? How can I keep from

Detailed description: This system contains the third vocal phrase. The vocal line starts with a treble clef, a key signature of one flat, and a 4/4 time signature. It begins with a rest for two measures, followed by a melodic line starting on G4. The piano accompaniment starts with a bass clef, a key signature of one flat, and a 4/4 time signature. It begins with a rest for two measures, followed by a rhythmic accompaniment of eighth notes.

sing - ing when the rest - less rhy - thms start? They

This system contains the first two systems of music. The top system shows the vocal line with lyrics and a piano accompaniment. The bottom system shows a more active piano accompaniment with chords and moving lines in both hands.

35  
 race with - in my be - ing, a time and place a -

35

This system contains the third and fourth systems of music. The top system shows the vocal line with lyrics and a piano accompaniment. The bottom system shows a more active piano accompaniment with chords and moving lines in both hands.

part, \_\_\_\_\_ So how can I stop? How can I stop sing-ing my

This system contains the fifth and sixth systems of music. The top system shows the vocal line with lyrics and a piano accompaniment. The bottom system shows a more active piano accompaniment with chords and moving lines in both hands.

44

*p* Oo

song? Then at times it woos me, —

44

*S<sup>va</sup>*

*p*

*decresc.*

call - ing — my name, Like a qui - et

*S<sup>va</sup>*

Oo  
whis - per, — al - ways — the same.

*p*  
Call - ing, — call - ing — my name.

*S<sup>va</sup>*

*sop. div.* 52

*f*

But I can't re - sist its — plain - tive — re -

*f*

*8va* 52 *loco*

*f*

*mp* ( $\bullet = \bullet$ ) *cresc.*

frain. ————— So time af - ter

*mp* ( $\bullet = \bullet$ )

*sop. div.*

*f*

time I am drawn a - gain! —————

*unis. f*

Time af - ter time I am

*cresc.*

*f*

S 62 *mf*

How can I keep from sing - ing when the

A

T *mf*

drawn a - gain! How can I keep from

B

drawn a - gain!

62

mu - sic fills my soul? How can I keep from

*mf*

How can I keep from sing - ing when the mu - sic fills my

sing - ing when the mu - sic fills my soul?

*mf*

How can I keep from sing - ing when the

sing - ing when the rhy - thm takes con - trol? Like a  
 soul? How can I keep from sing - ing? Like a  
 How can I keep from sing - ing when it takes con - trol? Like a  
 mu - sic fills my soul, when it takes con - trol? Like a

The first system consists of four vocal staves and a piano accompaniment. The vocal staves are in a 3/4 time signature with a key signature of two flats (B-flat and E-flat). The piano accompaniment features a steady bass line in the left hand and a more complex, rhythmic pattern in the right hand, primarily using chords and eighth notes.

70  
 deep and wind - ing riv - er, it runs and o - ver -  
 deep and wind - ing riv - er, deep and wind - ing riv - er runs and o - ver -  
 70

The second system begins at measure 70 and continues to measure 74. It features two vocal staves and a piano accompaniment. The time signature changes to 3/4. The vocal staves have lyrics that describe a winding river. The piano accompaniment includes a melodic line in the right hand and a bass line in the left hand, with some chords and eighth notes. There are dynamic markings like accents and hairpins throughout.