

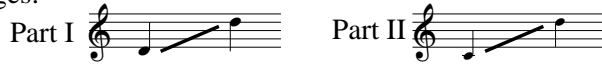
# Puzzling Paradoxoxymorons

Two-part Chorus, Piano, and Optional Staging Suggestions

Based on a poem  
by Christina Rossetti  
Additional text by B. P.

Brad Printz

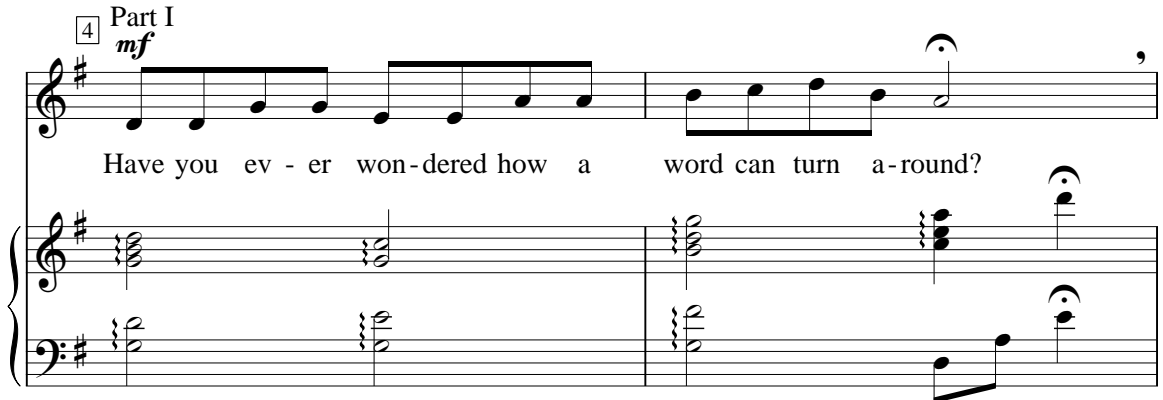
Ranges:



Freely, recitative style

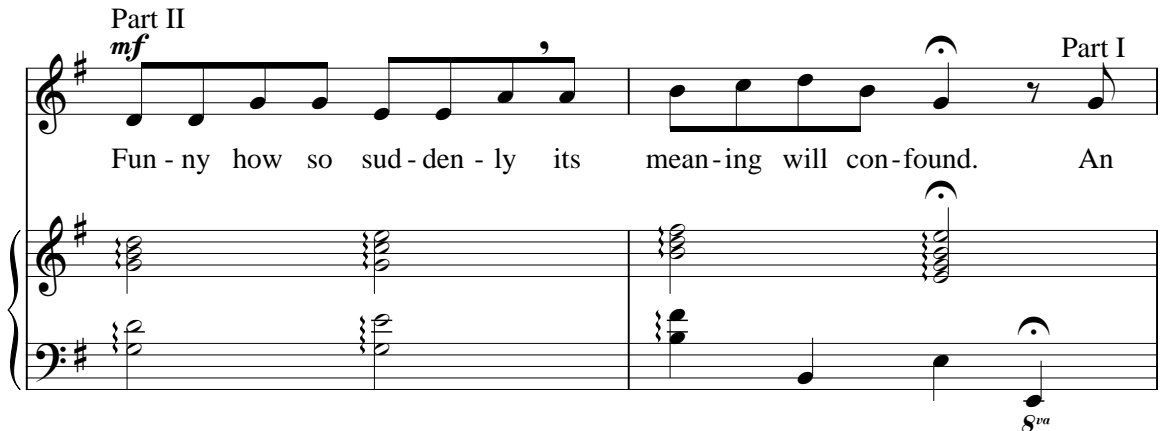


4 Part I  
*mf*



Have you ev - er won - dered how a word can turn a - round?

Part II  
*mf*



Fun - ny how so sud - den - ly its mean - ing will con - found. An

8<sup>va</sup>

Duration: approx. 3:00

Parts I and II

ox - y - mo - ron con - tra - dicts it - self in sil - ly ways. A

The first system features a vocal line in treble clef with a key signature of one sharp (F#) and a 4/4 time signature. The lyrics are "ox - y - mo - ron con - tra - dicts it - self in sil - ly ways. A". Below the vocal line is a piano accompaniment in grand staff (treble and bass clefs). The piano part consists of chords and single notes, with a fermata over the final chord.

par - a - dox is much the same, — we hear them ev' - ry

The second system continues the vocal line and piano accompaniment. The lyrics are "par - a - dox is much the same, — we hear them ev' - ry". The piano part includes markings for "L.H." (Left Hand) and "rit." (ritardando). The system ends with a fermata over the final chord.

12 Playfully ♩ = ca. 126 (2nd time) mp 14 (A)\*

I day. A pin has a head but

II day.

12 Playfully ♩ = ca. 126 14

decresc. (2nd time only) mp

The third system is divided into three parts. Part I (top) is a vocal line for Part I, starting at measure 12 with a tempo marking of "Playfully ♩ = ca. 126" and a dynamic of "mp". It includes a first ending bracket and a second ending bracket starting at measure 14 with a circled "A" and an asterisk. The lyrics are "day. A pin has a head but". Part II (middle) is a vocal line for Part II, starting at measure 12 with the lyrics "day.". The piano accompaniment (bottom) starts at measure 12 with a tempo marking of "Playfully ♩ = ca. 126" and includes a first ending bracket and a second ending bracket starting at measure 14 with a dynamic of "mp" and a marking of "decresc. (2nd time only)".

\*Show signs second time only.

I X \*

has no hair; \_\_\_\_\_

II *mp* (B)

A clock has a face but

I 20 (C)

Nee-dles have eyes \_\_\_\_\_

II X

no mouth there; \_\_\_\_\_ Nee-dles have eyes \_\_\_\_\_

20

I *cresc.* f X

but can - not see; \_\_\_\_\_ A

II (D) *cresc.* f X

but can - not see; \_\_\_\_\_ A

*cresc.* f

\*Hide signs at the 'X'.

I <sup>Ⓔ</sup> *decresc.* **mp**  
tree has a trunk with-out lock or key.

II <sup>Ⓕ</sup> *decresc.* **mp**  
tree has a trunk with-out lock or key.

*decresc.* **mp legato**

I <sup>Ⓐ</sup> <sup>28</sup> *legato*  
but have no feet; \_\_\_\_\_

II <sup>Ⓒ</sup> *legato*  
Riv - ers \_ run Oo \_\_\_\_\_

<sup>28</sup>

I <sup>Ⓓ</sup>  
but does not eat; \_\_\_\_\_

II <sup>Ⓐ</sup>  
A saw has \_ teeth Oo \_\_\_\_\_

I X 34 I

II *div.* but has a

A hill has no leg Oo

I X 38 J

II A wine - glass a stem

foot;

I 1.

II *div.* but not a root. Oo

(p. 4, m. 14) 2.

A root.

*mf*

So

*mf*

So

48

goes our \_ lan - guage up - side down, \_\_\_\_\_ Words

goes our \_ lan - guage up - side down, \_\_\_\_\_ Words

48

I  
of - ten go west when east - bound. \_\_\_\_\_

II  
of - ten go west when east - bound. \_\_\_\_\_

Piano accompaniment with treble and bass staves.

54  
I  
May-be we've bumped \_\_\_\_\_ your fun - ny bone, \_\_\_\_\_

II  
May-be we've bumped \_\_\_\_\_ your fun - ny bone, \_\_\_\_\_

54  
Piano accompaniment with treble and bass staves.

I  
\_\_\_\_\_ But don't let it laugh \_\_\_\_\_ while go - ing

II  
\_\_\_\_\_ But don't let it laugh \_\_\_\_\_ while go - ing

Piano accompaniment with treble and bass staves.