

# Kum Bah Yah

(Come By Here)

TTBB Chorus and Piano

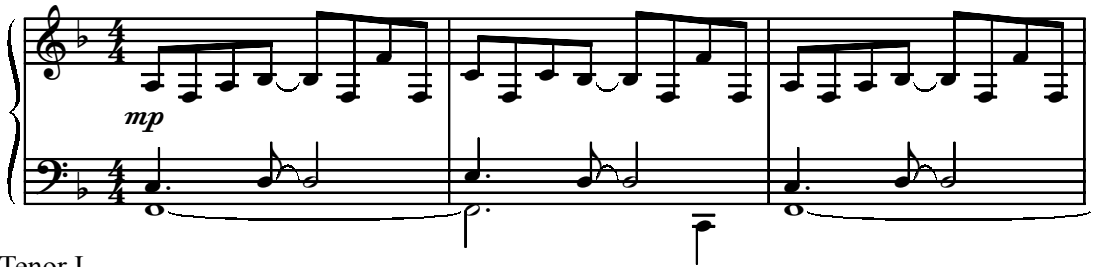
Trad., alt.

Traditional African Folk Tune  
Arranged by Earlene Rentz Turner

Ranges: Tenor I Tenor II Baritone Bass



Gently rocking ♩ = ca. 108



4 Tenor I

Tenor II *mp*

Bass *mp*

Kum bah yah, — kum bah yah, kum bah yah, —

Kum bah yah, — kum bah yah, kum bah yah, —

Duration: approx. 3:10

7 *mp*

Kum bah

kum bah yah, — kum bah yah, kum bah yah, kum bah,

kum bah yah, — kum bah yah, kum bah yah, kum bah,

9

yah, my Lord, — kum bah

kum bah yah, — kum bah yah, kum bah yah, —

kum bah yah, — kum bah yah, kum bah yah, —

11

yah. Kum bah  
 kum bah yah, kum bah yah, kum bah yah,  
 kum bah yah, kum bah yah, kum bah yah,

*p.*

13 TI

yah, my Lord, kum bah  
 kum bah yah, kum bah yah, kum bah yah,  
 kum bah yah, kum bah yah, kum bah yah,

TII  
 Baritone *mp*  
 Bass

*p.*

15

yah, kum bah yah. Kum bah  
 kum bah yah, kum bah yah, kum bah yah.  
 kum bah yah, kum bah yah, kum bah yah.  
 kum bah yah, kum bah yah, kum bah yah.

17

yah, my Lord, kum bah  
 Kum bah yah, kum bah yah, kum bah yah,  
 Kum bah yah, kum bah yah, kum bah yah,  
 Kum bah yah, kum bah yah, kum bah yah,

19

yah. Oh Lord, oh Lord, oh  
 kum bah yah, kum bah yah. Oh Lord, oh  
 kum bah yah, kum bah yah. Oh Lord, oh Lord, oh  
 kum bah yah, kum bah yah. Oh Lord, oh Lord, oh

22

Lord, kum bah, kum bah yah, kum bah yah, kum bah yah, kum bah  
 Lord, kum bah, kum bah yah, kum bah yah, kum bah yah, kum bah  
 Lord, kum bah, kum bah yah, kum bah yah, kum bah yah, kum bah  
 Lord, kum bah yah, kum bah

Gospel style ♩ = 116

*mf*

25

TT

TT

yah. \_\_\_\_\_

Some-one's

*mf*

BB

yah. \_\_\_\_\_

Gospel style ♩ = 116

*mf*

29

cry - in', Lord, \_\_\_\_\_ kum bah yah. \_\_\_\_\_ Some-one's

*mp*

*mp*

*mp*

33

cry - in', Lord, \_\_\_\_\_ kum bah yah, kum bah yah, \_\_\_\_\_ kum bah yah. \_\_\_\_\_

36 *mf*

Some-one's cry - in', Lord, kum bah

*mf*

*mf*

39 *f*

yah, kum bah yah, oh Lord, oh Lord,

*f*

*f*

42 *ff*\*

- kum bah yah. And some-one's shout - in', Lord,

*ff*

More movement ♩ = 120

*cresc.*

*ff*

More movement ♩ = 120

15/1684H-7 \*Hand claps on beats 2 and 4 to measure 59.

46

*f*

- kum bah yah. \_\_\_\_\_ Some-one's shout - in', Lord, \_\_\_\_\_

*f*

50

*ff*

- kum bah yah, kum bah yah. \_\_\_\_\_ Some - one's \_\_\_\_\_

*ff*

Some - one's \_\_\_\_\_

*ff*

53

shout-in', Lord, \_\_\_\_\_ kum bah yah, kum bah yah. \_\_\_\_\_

shout-in', Lord, \_\_\_\_\_ shout-in', Lord, \_\_\_\_\_ kum bah yah, kum bah \_\_\_\_\_ yah. \_\_\_\_\_



## End Hand Claps

56

Oh Lord, oh Lord, kum bah yah.

60

*p* Hymn-like ♩ = 112

Kum bah yah, my Lord, kum bah yah.

*p*

Hymn-like ♩ = 112

64

Kum bah yah, my Lord, kum bah yah, kum bah

68

*mp*

yah. Kum bah yah, my Lord, kum bah

*mp*

*mp*

71

*mf poco rit.* *mp* *rit.*

yah. Oh Lord, oh Lord, kum bah,

*mf poco rit.* *mp* *rit.*

*mf poco rit.* *mp* *rit.*

75 **Tempo I**

kum bah yah, — kum bah yah, kum bah yah, —  
 kum bah yah, — kum bah yah, kum bah yah, —  
 kum bah yah, — kum bah yah, kum bah yah, —  
 yah, — kum bah

**Tempo I**

77

kum bah yah, — kum bah yah, kum bah yah, —  
 kum bah yah, — kum bah yah, kum bah yah, —  
 kum bah yah, — kum bah yah, kum bah yah, —  
 yah, — kum bah

\*Cue notes preferred.