

# HERITAGE CHORAL SERIES

Distinctive Choral Music *for the* Discriminating Music Educator  
HERITAGE MUSIC PRESS • BOX 802 • DAYTON, OHIO 45401-0802

SSA Edition

*for my sister, Abby*

## Come in from the Firefly Darkness

SSA and Piano\*

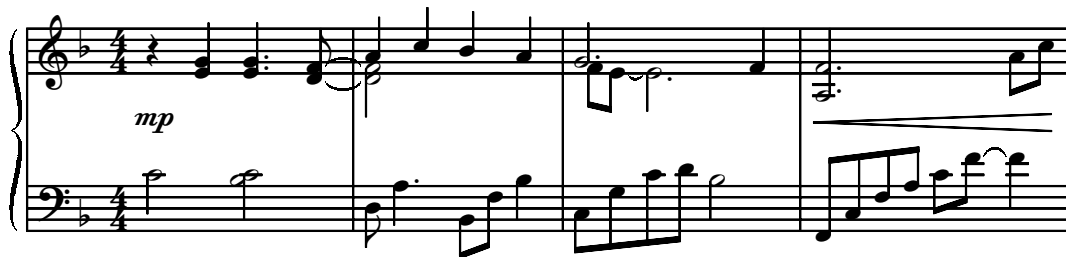
A.F.B.

Amy F. Bernon

Ranges: Soprano I    Soprano II    Alto



Legato, sweeping ♩ = 120



5 S *mf*

O - pen up — your door, my friend, and let me come in, —  
I have wan - dered through this land from end — to end. —

S *mf*

O - pen up — your door, my friend, and let me,  
I have wan - dered through this land from end to,

A *mf*

O - pen up — your door, my friend, and let me come in, —  
I have wan - dered through this land from end — to end. —

*mf*

Duration: approx. 2:40

\*Also available for Three-part Mixed (15/1515H).

© 2000, This arrangement © 2002 Heritage Music Press, a division of The Lorenz Corporation.

All rights reserved. Printed in U.S.A.

Unauthorized reproduction of this publication is a criminal offense subject to prosecution.

THE CCLI LICENSE DOES NOT GRANT PERMISSION TO PHOTOCOPY THIS MUSIC.

- come in from the fire - fly dark-ness to  
 - I've come home through the fire - fly dark-ness to  
 let me come in, come in from the fire - fly dark-ness to  
 end to end, come home through the fire - fly dark-ness to

1. (m. 5) 2.  
 hear your sto - ries a - gain. sing with you a - gain.  
 hear your sto - ries a - gain. sing with you a - gain.  
 hear your sto - ries a - gain. sing with you a - gain.

15 *f*

Sing songs of won - der, sing of life be - gun,

*f*

Sing songs of won - der, sing of life be - gun,

*f*

Sing songs of won - der, sing of life be - gun,

19 *sub. mp* *f*

of fire - flies and full moons o-ver mead-ows green.— Sing songs of

*sub. mp* *f*

of fire - flies and full moons o-ver mead-ows green.— Sing songs of

*sub. mp* *f*

of fire - flies and full moons o-ver mead-ows green.— Sing songs of

*sub. mp* *f*

2nd time to Coda (p. 7) ☉

23

sub. *mp*

chil - dren — grow - ing toward the sun, like the wild, new

chil - dren — grow - ing toward the sun, like the wild, new

chil - dren — grow - ing toward the sun, like the wild, new

sub. *mp*

sub. *mp*

2nd time to Coda (p. 7) ☉

sub. *mp*

27

lil - ies of the spring, — the spring.

lil - ies of the spring, — the spring.

lil - ies of the spring, — the spring.

*p*

*p*

*p*

*mf*

31

Solo *f*

I've been up— in

This musical system contains measures 31 through 34. It features a vocal line in the upper staff and a piano accompaniment in the lower staves. The vocal line begins with a rest for three measures, followed by the lyrics "I've been up—" in measure 34. The piano accompaniment consists of chords in the right hand and a rhythmic pattern in the left hand.

35

Solo *f*

moun-tain skies with the elk and the snow,  
heard the si-lence—of the prai-

This musical system contains measures 35 through 38. The vocal line starts with the lyrics "moun-tain skies with the elk and the snow," in measure 35, followed by a triplet of notes in measure 36. The lyrics "heard the si-lence—of the prai-" appear in measure 37. The piano accompaniment continues with chords and a rhythmic pattern, including a triplet of notes in the right hand in measure 36.

39

*tutti f*

Road and riv - er  
 - rie, *Solo f* Road and riv - er  
 and watched the wild— grass grow. *f* Road and riv - er

43

*p*

beck - on me in voic - es clear\_ and low. My\_ path will be lit by  
 beck - on me in voic - es clear and low. My path will be lit\_ by\_  
 beck - on me in voic - es clear and low. My\_ path will be lit by

47 *poco rit.* *a tempo pp*

fire-flies, so now, friend, I will go. And in the sweet-ness of the night.

*poco rit.* *a tempo pp*

fire-flies, so now, friend, I— will go. And in the sweet-ness of the night.

*poco rit.* *a tempo pp*

fire-flies, so now— friend, I will go. And in the sweet-ness of the night.

*poco rit.* *a tempo*

51 *D.S. al Coda (p. 3) ⊕ Coda* *rit.* *ff*

- I will sing. - grow-ing toward the sun, —

*rit.* *ff*

- I— will sing. - grow-ing toward the sun, —

*rit.* *ff*

- I will sing. - grow-ing toward the sun,

*D.S. al Coda (p. 3) ⊕ Coda* *mp* *rit.* *ff*