

Commissioned by the Berry Middle School Select Choir, Mesquite, TX,
Sandy Shelley, director, for their performance at the 2002 TMEA Convention

O Lovely Rose

M. P.

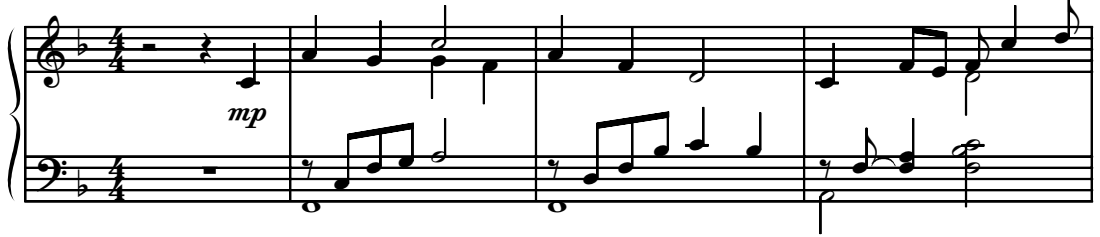
SSA and Piano

Mark Patterson

Ranges: Soprano I Soprano II Alto



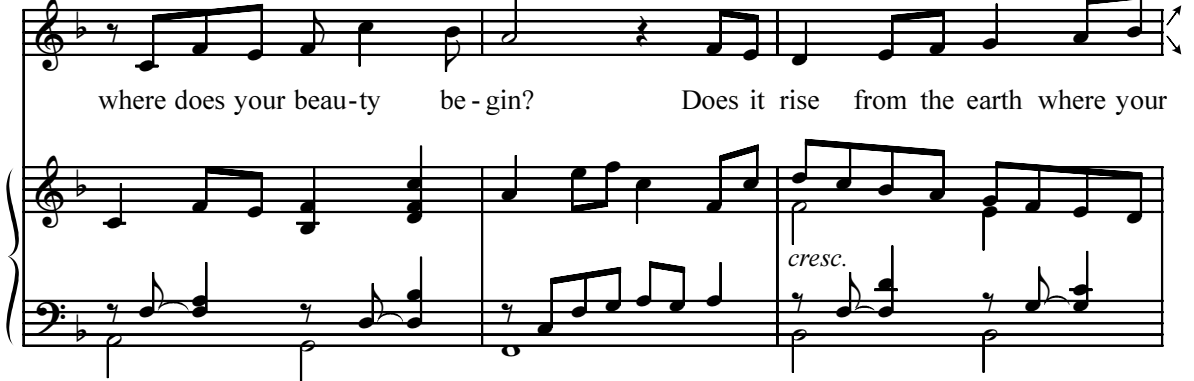
Tenderly, rubato ♩ = 84



5 All voices *mp*



8 *cresc.*



Duration: approx. 3:00

11 SI, II

roots have grown? Does it fall from the sun whose light has shone up -

A
roots have grown? Does it fall from the sun whose light has shone up -

14 *mf*

mf
on you, up - on you? O love - ly rose,

mf
on you, up - on — you? love - ly

love - ly rose, where does your beau-ty be - gin?

rose, love - ly — rose,

mp *rall.*

20 S *a tempo* *mp*

When I first passed by you_____

S *mp a tempo*

When I first passed by you_____ not a sin - gle

A *mp*

When I first passed by you_____

mp a tempo

24

_____ no flow - er stood, just

flow - er stood, no flow - er stood, just

not a sin - gle flow - er stood, _____ no flow - er stood, just

28 *intensifying*

branch - es clothed in rug - ged thorns on rough and bend - ed

intensifying

branch - es clothed in rug - ged thorns on rough and bend - ed

intensifying

branch - es clothed in rug - ged thorns on rough and bend - ed

intensifying

31 *mf*

wood. But some - where there must have been a

mf

wood. But some - where there must have been a

mf

wood. Some - where there must have been a

mf

34

ten - der bud or two; your prom - ised beau - ty

ten - der bud or two; your prom - ised beau - ty

ten - der bud or two; your prom - ised beau - ty

37

wait - ing there, wait - ing there to bloom. O

wait - ing there, wait - ing there to bloom. O

wait - ing there, wait - ing there to bloom. O

40 *a tempo*

love - ly rose, love - ly rose, where does your beau-ty be -

a tempo

love - ly rose, love - ly rose, where does your beau-ty be -

mf a tempo

43 *cresc.*

gin? Does it rise from the earth where your roots have grown? Does it

cresc.

gin? Does it rise from the earth where your roots have grown? Does it

cresc.

46 *mf*

fall from the sun whose light has shone up - on you, up - on you? O

mf

fall from the sun whose light has shone up - on you, up - on— you?

mf