

ONE IN A MILLION

SATB CHORUS AND PIANO*

P.B.

PETER BLAIR

RANGES: SOPRANO ALTO TENOR BASS

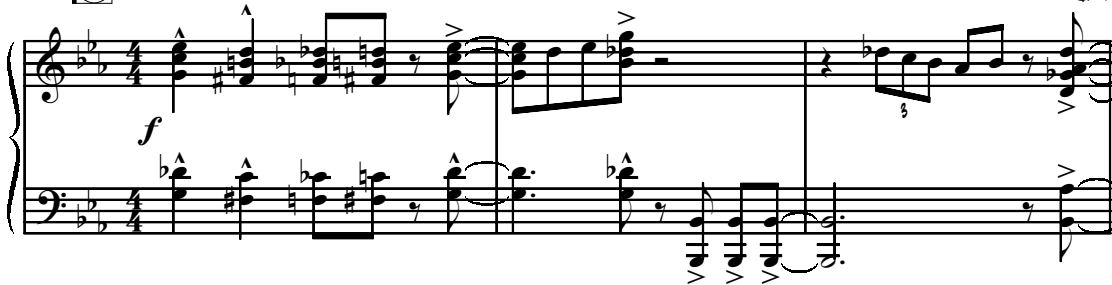


GOSPEL SWING ♩=136

①

E♭13 D13 D♭13 D13 E♭13

B♭+7(#9)



4

SA *f*

You — are

TB *f*

Ab/B♭

Duration: approx. 2:35

*Also available for Jazz Ensemble (30/1738H) and Performance/Accompaniment CD (99/1666H).

7

one in a mil - lion, I can't be - lieve you're mine!

E_b(No3) *E_b6* *A_b9* *A_b/B_b*

10

You are one in a mil - lion and

E_b(No3) *E_b6*

13

let me un - der - line: I wake up ev - 'ry day won - d'rin'

A_b9 *EM₁/B_b* *B_b7* *E_bMA7*

4

16

how this can be, — I thank my luck - y stars. —

BbM1 A9(b5) AbMA9 Ab6

18

- You're one in a mil - lion, and to -

D9 Eb6/8b C7(#9)

21

geth - er the fu - ture is ours,

Fm17 Gm17 Ab Bb7(b5) Eb6

24

2

It's one in a mil - lion, the

Measures 24-26 of the vocal line. The melody starts with a whole rest, followed by quarter notes G4, A4, Bb4, C5, and D5. Measure 25 has a half rest. Measure 26 has a quarter note G4 and a quarter rest.

E \flat (N \circ 3) E \flat 6

Piano accompaniment for measures 24-26. Measure 24 has a whole rest. Measure 25 has a half note G3 and a half note Bb3. Measure 26 has a half note G3 and a half note Bb3. Chords are E \flat (N \circ 3) and E \flat 6.

27

chance we have for love. It's one in a mil - lion,

Measures 27-29 of the vocal line. Measure 27 has quarter notes G4, A4, Bb4, C5, and D5. Measure 28 has a half rest. Measure 29 has quarter notes G4, A4, Bb4, C5, and D5.

A \flat 9 A \flat /B \flat E \flat (N \circ 3)

Piano accompaniment for measures 27-29. Measure 27 has a half note G3 and a half note Bb3. Measure 28 has a half note G3 and a half note Bb3. Measure 29 has a half note G3 and a half note Bb3. Chords are A \flat 9, A \flat /B \flat , and E \flat (N \circ 3).

30

it comes from hea - ven a - bove. — The first

Measures 30-32 of the vocal line. Measure 30 has quarter notes G4, A4, Bb4, C5, and D5. Measure 31 has a half rest. Measure 32 has quarter notes G4, A4, Bb4, C5, and D5.

E \flat 6 A \flat 9 A \flat /B \flat

Piano accompaniment for measures 30-32. Measure 30 has a half note G3 and a half note Bb3. Measure 31 has a half note G3 and a half note Bb3. Measure 32 has a half note G3 and a half note Bb3. Chords are E \flat 6, A \flat 9, and A \flat /B \flat .

time I saw you— I knew that that must be true,— and I

E \flat MA9 **B \flat m17** **A9(b5)**

thanked my luck - y stars.—— You're one in a - mil - lion,

A \flat MA9 **D \flat 9** **E \flat 6/B \flat**

and to - geth - er the fu - ture is ours. The

C7(#9) **Fm17** **Gm17** **A \flat** **A \flat /B \flat** **E \flat 6** **D \flat /E \flat**

41

③

day that I met you,
it turned my life a - round.

Ab9 Eb9

44

I knew in a mo-ment my

Eb13 Ab9

47

chance had been found. The choic - es were o - ver,

F9 Ab/Bb Db/Eb

I'd be there for you. —

AbMA9

There was mag-ic in that mo-ment, I'm glad you knew it too! —

CMI7 F-7(b5) F7 FM17 GM17 Ab F7/A Ab/Bb

— Yes, it's true! — You — are

GM17/C

59

one in a mil - lion, I can't be - lieve you're mine!

F(N03) F6 Bb9 Bb/C

62

You— are one in a mil - lion and

F(N03) F6

65

let me un - der - line:— I wake up ev - 'ry day— won-d'rin'

Bb9 Gm17/C FMA7

how this can be, — I thank my luck - y stars. —

CM17 B9(b5) BbMA9

- You're one in a mil - lion, and to -

Eb13 3 DM17/C D7(#9)

geth - er the fu - ture is ours, and to - geth - er the fu - ture is ours,

GM17 AM17 Bb FM16/C F6 D+7(#9) GM17 AM17 Bb FM16/C F6