

for the 2004 Florida All-State Mixed Chorus, Tampa, Florida

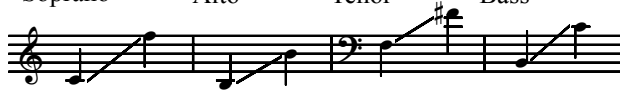
Music, When Soft Voices Die

SATB Chorus and Piano (Optional a cappella)

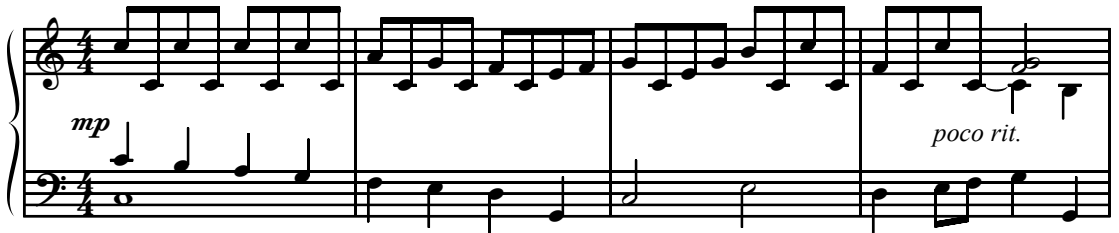
Percy Bysshe Shelley (1792-1822), alt.
Adapted text by E.R.

Earlene Rentz

Ranges: Soprano Alto Tenor Bass



Expressively ♩ = 84



5 SA *mp a tempo*

Mu - sic, when soft — voic - es die, Vi - brates in — the

TB

B div.

Piano accompaniment for the second system. The music continues from the first system. Dynamics include *mp a tempo*.

Duration: approx. 2:05

© 2004 Heritage Music Press, a division of The Lorenz Corporation. All rights reserved. Printed in U.S.A.

Unauthorized reproduction of this publication is a criminal offense subject to prosecution.

THE CCLI LICENSE DOES NOT GRANT PERMISSION TO PHOTOCOPY THIS MUSIC.

9

mem - o - ry. Fra - grance, when sweet — vio - lets

12

p *poco rit.*

fade, Lives, but in the mem - 'ry al - layed.

p *poco rit.*

16 *mp a tempo*

Mu - sic, when soft — voic - es die,

mp a tempo