

Bethlehem Child

Two-part Chorus and Piano

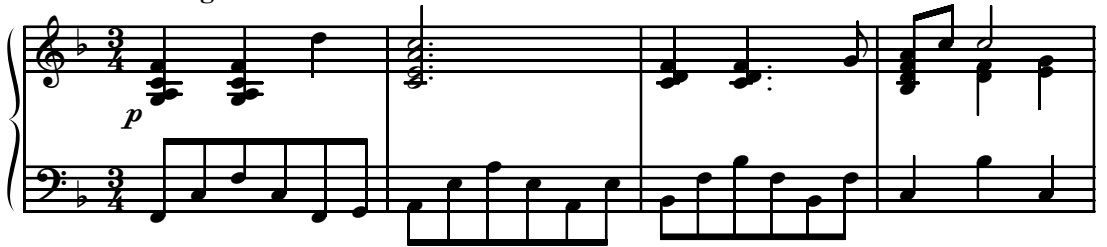
C.G.

Cynthia Gray
Quoting a Traditional Polish Carol

Ranges: Part I Part II



Flowing ♩ = 112



5 Part I *p*



8



Duration: approx. 2:10

© 2004 Heritage Music Press, a division of The Lorenz Corporation. All rights reserved. Printed in U.S.A.

Unauthorized reproduction of this publication is a criminal offense subject to prosecution.

THE CCLI LICENSE DOES NOT GRANT PERMISSION TO PHOTOCOPY THIS MUSIC.

www.lorenz.com

11 *mp*

God, he is no strang - er. This child of love was

mp

14

sent from a - bove, So sing ju - bi - la - tion, join ev - 'ry na - tion!

17 *mf*

Raise your hearts and voic - es, all the earth re - joic - es: "Al - le - lu - ia!"

mf

20

Glad tid - ings bring.

p

Part II *p*

23

Beth - le - hem

26

Child, born in a man - ger,

29

In - fant so mild, dear ho - ly

32

mp

strang - er. You were born a child of love, a sign of

mp

35 *mf*

peace and hope sent from a - bove. Praise shall we

38 *sub. p*

sing thee, Love shall we bring thee, Beth-le'm

41

Child.

45

49 *mf*

I
Come with re-joic-ing, come with re-joic-ing, Has-ten to the man-ger!

II
mf
Beth - le - hem Child, born in a man-ger,

mf

53

I
There lies a child, an in - fant so mild, To God, he is no strang-er.

II
In - fant so mild, dear, ho - ly strang-er.

57

I
This child of love was sent from a-bove, So sing ju - bi - la-tion,

II
You were born a child of love, a sign of peace and hope sent from a -