

# Canticle of Praise

Two-part Chorus and Piano\*

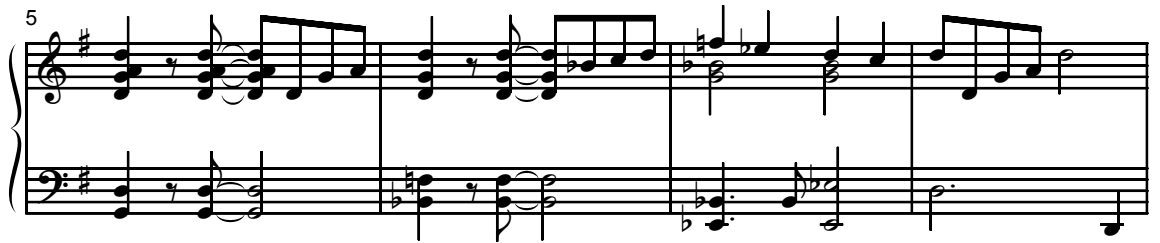
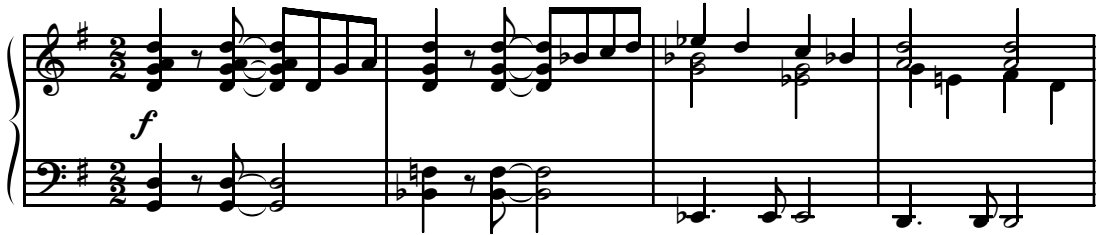
J.E. and Traditional Latin

Jerry Estes

Ranges: Part I Part II



With excitement ♩ = 80



9 *f*

I "Glo - ri - a, — glo - ri - a in ex -

II *f* "Glo - ri - a, — glo - ri - a in ex -

Duration: approx. 1:45

\*Also available for Three-part Mixed (15/1923H).

© 2004 Heritage Music Press, a division of The Lorenz Corporation. All rights reserved. Printed in U.S.A.

Unauthorized reproduction of this publication is a criminal offense subject to prosecution.

THE CCLI LICENSE DOES NOT GRANT PERMISSION TO PHOTOCOPY THIS MUSIC.

www.lorenz.com

12

I  
cel - sis. Al - le - lu - ia,

II  
cel - sis. Al - le - lu - ia, \_\_\_\_\_

15

I  
al - le - lu - ia," we sing.

II  
al - le - lu - ia," we sing. Gau - de - a - mus, —

18

I  
Gau - de - a - mus ho - di - e. \_\_\_\_\_

II  
\_\_\_\_\_ gau - de - a - mus ho - di - e.

21

I  
Come to- geth - er and sing, \_\_\_\_\_

II  
Come to- geth - er and sing,

24

I  
let the prais - es ring!

II  
let the prais - es ring!

27

I  
The

II  
*mp* Now is the time to sing a new\_ song. \_

*mp*

31

I day of re - joic - ing has come. With the

II

*mf*

35

I joy the mu - sic brings, our hearts are giv - en wings. We will

II Joy the mu - sic brings, our hearts are giv - en

*mf*

39

I sing, sing togeth - er as one, sing as

II wings, we will sing as one, sing as

43

I  
one! \_\_\_\_\_

II  
one! \_\_\_\_\_ "Glo - ri - a, \_\_\_\_\_

*f*

46

I  
*f*  
"Glo - ri - a, \_\_\_\_\_ glo - ri - a in ex - cel - sis.

II  
\_\_\_\_\_ glo - ri - a in ex - cel - sis. Al - le -

49

I  
Al - le - lu - ia, \_\_\_\_\_ al - le - lu - ia," we

II  
lu - ia, \_\_\_\_\_ al - le - lu - ia," we

52

I  
sing. Gau - de - a - mus

II  
sing. Gau - de - a - mus, \_\_\_\_\_

55

I  
ho - di - e. \_\_\_\_\_ Come to- geth - er and

II  
gau - de - a - mus ho - di - e.

58

I  
sing. \_\_\_\_\_

II  
Come to- geth - er and sing, *sub. mp* let the prais - es