

# Some Folks Do

Rehearsal Prep Sheet: **3-part mixed**  
for use with **Heritage Publication 15/2092H**

Arranged by Earlene Rentz

Key: F Major

$\text{♩} = 72$  (Unison)

1. **Part I**  
**Part II**  
**Part III**

Do Re Mi Fa So Do Re Mi Fa So

6

So Mi Mi Mi So Mi Mi Mi Mi So Fa Mi Re Fa Re Fa Fa Re Mi Do

2. *(Sing solfege syllables for all notes)*

1 5 9

Do Re Mi Fa So So So So Fa Fa Fa Fa Mi Re Do

3. *(Solfege syllables)*

I 6 8 9

4. **Key: G Major**

1 4

Some folks, some folks like to, like to smile, some folks like to smile, some folks like to smile.

Some folks, some folks like to, like to smile, some folks like to smile, some folks like to smile.

Some folks, some folks like to, like to smile, some folks like to smile, some folks like to smile.

# Some Folks Do

Three-part Mixed Chorus and Piano\*

S.C.F., alt.

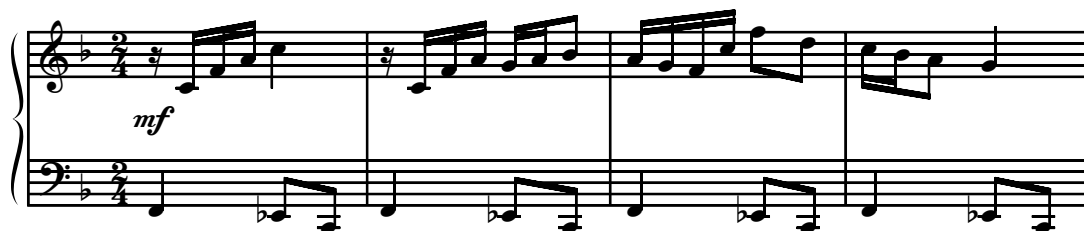
Stephen C. Foster (1826-1864)

Arranged by Earlene Rentz

Ranges: Part I Part II Part III



Playfully ♩ = ca. 96



5 *mf*

I  
Some folks like to sigh, some folks do, some folks do.

II  
Some folks like to sigh, some folks do, some folks do.

III  
Some folks like to sigh, some folks do, some folks do.

Duration: approx. 1:35

\*Also available for TB (15/2093H).

© 2006 Heritage Music Press, a division of The Lorenz Corporation. All rights reserved. Printed in U.S.A.

Unauthorized reproduction of this publication is a criminal offense subject to prosecution.

THE CCLI LICENSE DOES NOT GRANT PERMISSION TO PHOTOCOPY THIS MUSIC.

[www.lorenz.com](http://www.lorenz.com)

9

I  
Some folks frown and cry, \_\_\_\_\_ but that's not me nor

II  
Some folks frown and cry, \_\_\_\_\_ but that's not me nor

III  
Some folks frown and cry, \_\_\_\_\_ but that's not me nor

12

*f*

I  
you. Long live the mer-ry, mer-ry heart that

*f*

II  
you. Long live the mer-ry, mer-ry heart that

*f*

III  
you. Long live the mer-ry, mer-ry heart that

*f*

15

I  
laughs by night and day. It's a heart of

II  
laughs by night and day. It's a heart of

III  
laughs by night and day. It's a heart of

The musical score for measures 15-17 consists of three vocal staves and a grand staff. The vocal parts (I, II, III) are in G major and 4/4 time. The lyrics are: 'laughs by night and day. It's a heart of'. The piano accompaniment features a rhythmic pattern of eighth and sixteenth notes in the right hand and a simple bass line in the left hand.

18

I  
joy, no mat-ter what some folks say.

II  
joy, no mat-ter what some folks say.

III  
joy, no mat-ter what some folks say.

The musical score for measures 18-20 consists of three vocal staves and a grand staff. The vocal parts (I, II, III) are in G major and 4/4 time. The lyrics are: 'joy, no mat-ter what some folks say.'. The piano accompaniment continues with a similar rhythmic pattern to the previous section.