

I've Been Workin' on the Railroad

Rehearsal Prep Sheet: TTBB
for use with Heritage Publication 15/2142H

Key: F Major

Arranged by Earlene Rentz

♩ = 88

1. *TI/II*
Do Re Mi Fa So Fa Mi Re Do Mi So Mi Do So Do

BI/II

2. *1*
Do Re Mi Fa So La So Fa Mi Re Do Do Mi Mi So Do Mi Mi So Do Mi So La So Mi Re Do

Do Re Mi Fa So Do So Fa Mi Re Do Do Mi Mi So Do Mi Mi So Do Mi So Do Do Do Re Do

3. *1* Sing straight 8ths, then Swing Style
Do Re Mi Re Do So So So La So Do Mi So La So Do Mi So La So

Do Re Mi Re Do So So So La Do Do La So Do Do Do La So Do Do

4. *1* Sing straight 8ths, then Swing Style
(Da)

5. *1* Straight 8ths/Slower Tempo
(La)

6. *1* Sing straight 8ths, then Swing Style
(La) On the rail-road!

I've Been Workin' on the Railroad

TTBB Chorus with Descant and Piano*

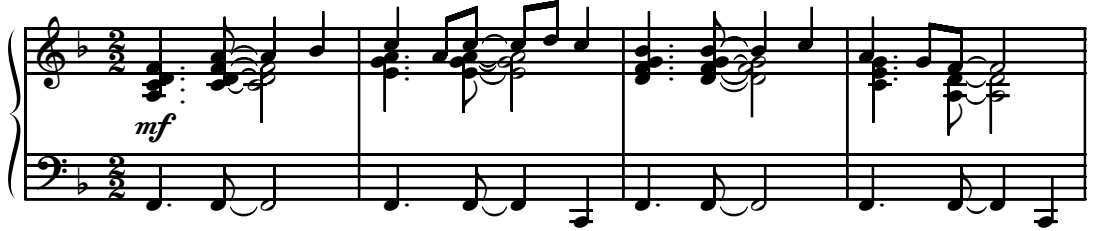
Trad., alt.

American Folk Song
Arranged by Earlene Rentz

Ranges: Tenor I Tenor II Baritone Bass



Swing style ♩ = ca. 72 (♩♩ = ⁻³♩)



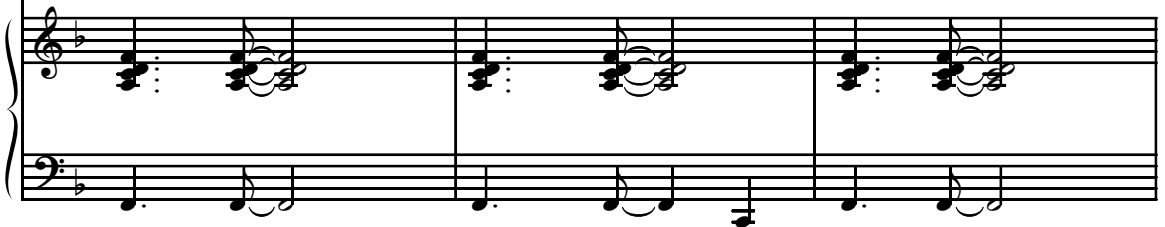
5 Tenor I

Tenor II *mf*

Baritone *mf* I've been — a -

I've — been a-work - in' on the rail - road, I've — been a-work-

Bass



Duration: approx. 2:25

*Also available for SATB (15/2141H) and Three-part Mixed (15/2157H).

© 2006 Heritage Music Press, a division of The Lorenz Corporation. All rights reserved. Printed in U.S.A.
Unauthorized reproduction of this publication is a criminal offense subject to prosecution.

THE CCLI LICENSE DOES NOT GRANT PERMISSION TO PHOTOCOPY THIS MUSIC.

www.lorenz.com

8 *mf*

I've been a - work - in', —

work - in', work - in', I've been — a - work - in', work - in',

- in' on the rail - road, I've — been a - work - in' on the rail - road,

mf

I've been — a - work - in', —

11 *sub. p cresc.*

I've been a - work - in', — Work - in',

sub. p cresc.

I've been — a - work - in', — Work - in',

sub. p cresc.

I've — been a - work - in' on the rail - road, Work - in',

sub. p cresc.

I've been — a - work - in', — Work - in',

sub. p cresc.

14

mf *mp*

work-in' on the rail-road. I've been a -

mf *mp*

work-in' on the rail-road. I've been a -

mf *f*

work-in' on the rail-road. I've been work-in' on the

mf *mp*

work-in' on the rail-road. I've been a -

mf *mp*

18

work - in', I've been a - work - in',

work - in', work - in', I've been a - work - in', work - in',

rail - road all the live - long day.

work - in', I've been a - work - in',

mf *mp*

21

I've been a - work - in'— just to pass the time a-way.—

I've been— a - work-in', work - in' just to pass the time a-way.—

I've been work-in' on the rail - road just to pass the time a - way.

I've been— a - work - in'— just to pass the time a-way.—

25

mp Can't you hear the whis - tle blow - in'? *f* Rise up

mp Can't you hear the whis - tle blow - in'? *f* Rise up

mp Can't you hear the whis - tle blow - in'? *f* Rise up so ear - ly in the

mp Can't you hear the whis - tle blow - in'? *f* Rise up