

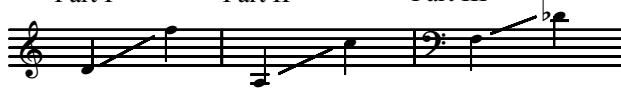
# Old House, Tear It Down!

Three-part Mixed Chorus, Piano and Rhythmic Speech\*

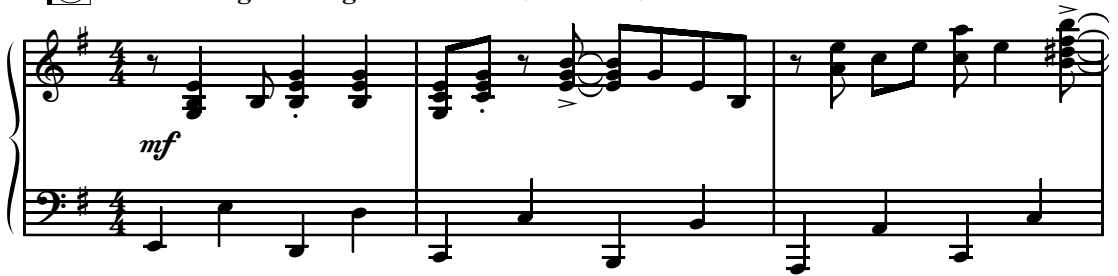
Traditional

Arranged by Greg Gilpin

Ranges: Part I Part II Part III



① With a bright swing ♩ = 126-132 (♩♩ = ♩<sup>3</sup>♩)



4 *mf*

I  
Old house, tear it down!\_

II  
Old house, tear it down!\_

III  
Old house, tear it down!\_

Duration: approx. 1:55

\*Also available for Two-part (15/2195H).

© 2006 Heritage Music Press, a division of The Lorenz Corporation. All rights reserved. Printed in U.S.A.

Unauthorized reproduction of this publication is a criminal offense subject to prosecution.

THE CCLI LICENSE DOES NOT GRANT PERMISSION TO PHOTOCOPY THIS MUSIC.

www.lorenz.com

7

I  
Who's gon - na help me tear it down?—

II  
Who's gon - na help me tear it down?—

III  
Who's gon - na help me tear it down?—

9

I  
Tear it down!—

II  
Tear it down!—

III  
Bring me a ham-mer. Tear it down!—

11 2

I  
Bring me a saw. — Tear it down! —

II  
Tear it down! —

III  
Tear it down! —

13

I  
tear it down, — is a

II  
Next thing you bring me, tear it down, — is a

III  
tear it down, — is a