

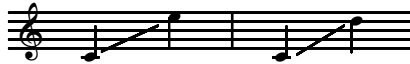
Always Believe

3

(A Song for December)
Two-part Chorus and Piano*

Words and Music by
Greg Gilpin

Ranges: Part I Part II



① Gentle ballad ♩ = ca. 80

p

F C/E Dm Am/C Bb C7sus C7

4 Solo 1** *p* Solo 2

For some, this is a sea - son of hope. — For

F Gm/F F F C/E Bb/D F/C

7 Solo 3

some, this is a sea - son of faith. — For

Bb F/A Gm Bb/C C/Bb

Duration: approx. 3:25

*Also available: SATB (15/2282H); SAB (15/2301H); Performance/Accompaniment CD (99/2127H).

**May be sung by Parts I and II. All solos are optional.

From the collection, *Pictures of December*
(A Program of Songs Celebrating a Musical Month of Joy)
#30/2112H - Two-part with Performance/Accompaniment CD included.

© 2006, this edition © 2007 Heritage Music Press, a division of The Lorenz Corporation.

All rights reserved. Printed in U.S.A.

Unauthorized reproduction of this publication is a criminal offense subject to prosecution.

THE CCLI LICENSE DOES NOT GRANT PERMISSION TO PHOTOCOPY THIS MUSIC.

www.lorenz.com

9 Solo 4

oth - ers, it's a sea - son so full of dreams and

F2/A F/A BbMaj7 Bb6 BbMaj7/C C/Bb F2/A F/A

11 Solo 5

wish - es that they long to come true. And

Gm7 Bb6/C C7

13 Solo 6

there are those who just en - joy the win - ter snow and

F/A Bb F/C C#dim Dm2 Dm

15 Solo 7

all the beau - ty na - ture can bring. And

Gm7 F/A Gm/Bb C7sus C7

Solo 8

17

man - y share the love of fam - 'ly and friends and

F C/E Bb/D F/C

19

show it with the things they do.

Bb Gm7 C7 F Bb6/C

Parts I and II

21

Al - ways be - lieve in

F Am/E Dm2 Dm F/C

p

23

what your heart is tell - ing you.

Bb F/A Gm7 Bb/C C

25

I
II

Al - ways be - lieve, let it

F Am/E Dm7 Dm F/C

27

I
II

guide you in all that you do.

Bb F/A Gm7 C C#m7-5

29

I
II

And in this sea - son, there's a won - der - ful rea - son to

Dm2 F/C Bb2 F/A

31

I
II

share our-selves and all that we are.

Gm7 C7sus C

33

I
II

Al - ways be - lieve — and be -

F C/E Dm7 Am/C

35

③

I
II

lieve the love that's deep in your heart. —

Bb C7sus C7 F Gm/F F

37

mp

I

Did you know — that there's a sin - gle thread —

mp

II

Did you know — that there's a sin - gle thread —

Bbm2 Bbm Eb/G Ab2 Fm7

mp