

# There's Room for Many-a More!

(incorporating *This Train*, *Get On Board, Little Children*  
*(The Gospel Train)*, and *New River Train*)  
 Two-part Chorus and Piano\*

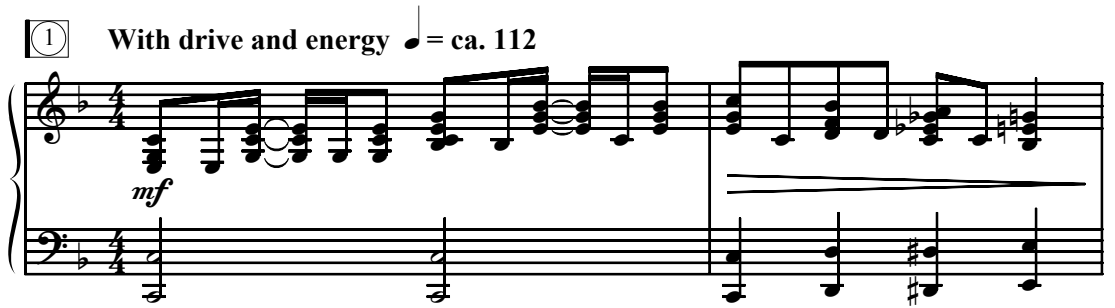
Traditional Spirituals  
 and American Folk Song  
*Arranged by Greg Gilpin*

Trad., alt.

Ranges: Part I Part II



① With drive and energy ♩ = ca. 112



3

I

II *mp*

This train is bound for glo - ry, this train. \_\_\_\_\_

*mp*

Duration: approx. 2:20

\*Also available: SATB (15/2455H); Three-part Mixed/SAB (15/2397H);  
 Performance/Accompaniment CD (99/2250H)

5

I This train is bound for glo - ry, this train. \_\_\_\_\_

II

7 *sub. p*

I This train is bound for glo - ry, don't ride noth-in' but the good and ho - ly!

II *sub. p*

This train is bound for glo - ry, don't ride noth-in' but the good and ho - ly!

*sub. p*

9 **2** *mp*

I *mp* This train is bound for glo - ry, this train. *mf*

II *mp* This train is bound for glo - ry, this train. *mf* Get on

*mp* *mf*

11 *mf*

I  
Get on board, lit - tle chil-dren. Get on

II  
board, lit - tle chil-dren. Get on

13

I  
board, lit - tle chil-dren. There's room for man-y-a more.

II  
board, lit - tle chil-dren. There's room for man-y-a more. Get on

15

I  
Get on board. Get on board, lit - tle chil-dren. Get on

II  
board, lit - tle chil-dren. Get on board. Get on

17

I board, lit - tle chil - dren. There's room for man-y - a

II board, lit - tle chil - dren. There's room for man-y - a

19 3 *cresc.* *mf*

I more. I'm

II more.

*cresc.* *f* *mf*

21

I rid - in' that New Riv - er Train. I'm

II Rid - in' that New Riv - er Train. Rid-in' that,

*mf*

23

I  
rid - in' that New Riv - er Train.

II  
rid - in' that New Riv - er Train, rid-in' that.

25

I  
Same old train that — brought me here gon - na

II  
Glo - ry bound, good and ho - ly,

27

④

I  
bring me back home a - gain! Get on *f*

II  
bring me back home a - gain! Get on *f*