

There's Room for Many-a More!

(incorporating *This Train*, *Get On Board, Little Children*
(*The Gospel Train*), and *New River Train*)

Three-part Mixed/SAB Chorus and Piano*

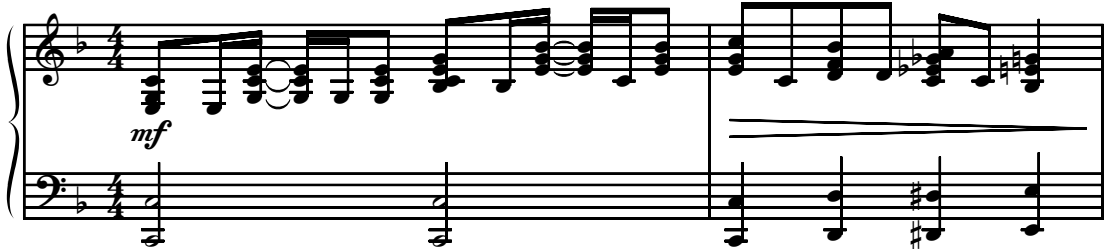
Trad., alt.

Traditional Spirituals
and American Folk Song
Arranged by Greg Gilpin

Ranges: Part I Part II Part III



① With drive and energy ♩ = ca. 112



3 *mp*

I
II
III

This train is bound for glo - ry, this train. _____

mp

mp

Duration: approx. 2:20

*Also available: SATB (15/2455H); Two-part (15/2381H); Performance/Accompaniment CD (99/2250H).

© 2008 Heritage Music Press, a division of The Lorenz Corporation. All rights reserved. Printed in U.S.A.
Unauthorized reproduction of this publication is a criminal offense subject to prosecution.

THE CCLI LICENSE DOES NOT GRANT PERMISSION TO PHOTOCOPY THIS MUSIC.

5

I
II

This train is bound for glo - ry, this train. _____

III

7

I
II

This train is bound for glo - ry, don't ride noth-in' but the good and ho - ly!

III

sub. p

sub. p

sub. p

9

I
II

This train is bound for glo - ry, this train.

III

mp *mf*

Get on

mp *mf*

11 *mf*

I
II

Get on board, lit - tle chil-dren. Get on

III

board, lit - tle chil-dren. Get on

13

I
II

board, lit - tle chil-dren. There's room for man-y-a more.

III

board, lit - tle chil-dren. There's room for man-y-a more. Get on

15

I
II

Get on board. Get on board, lit - tle chil-dren. Get on

III

board, lit - tle chil-dren. Get on board. Get on

17

I
II

board, lit - tle chil - dren. There's room for man - y - a

III

board, lit - tle chil - dren. There's room for man - y - a

19

III 3 *cresc.*

I
II

more..

III

more.. *mf*

I'm

cresc. *f* *mf*

21 *opt. div. mf*

I
II

Rid - in' that New Riv - er Train. Rid-in' that,

III

rid - in' that New Riv - er Train. I'm

23

I
II

rid - in' that New _____ Riv - er Train, rid-in' that.

III

rid - in' that New Riv - er Train.

25

I
II

Glo - ry bound, _____ good and ho - ly,

III

Same old train that _____ brought me here gon - na

27

I
II

bring me back home a - gain! *f* Get on

III

f