

# Agnus Dei

SATB Chorus and Piano\*

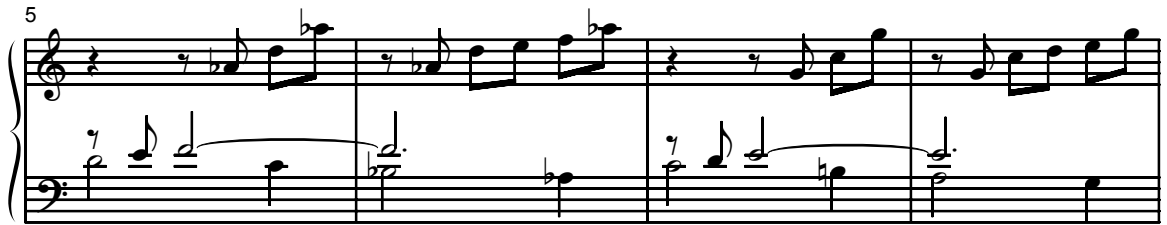
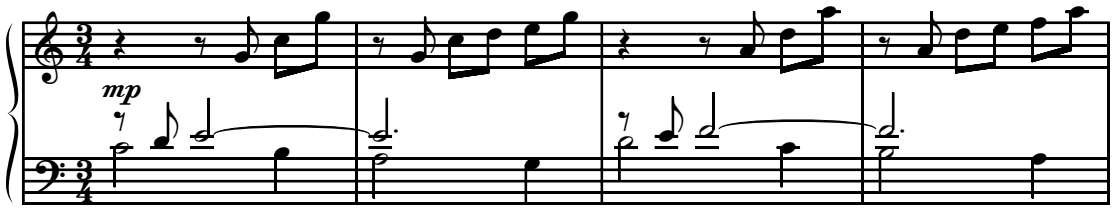
Ordinary of The Mass

Earlene Rentz

Ranges: Soprano Alto Tenor Bass



① Moderate, sustained ♩ = 88-92



9 SA *mp*



Ag - nus De - i, qui - tol - lis pec - ca - ta mun - di,

Ag - nus De - i, Ag - nus De - i,



Duration: approx. 2:30

\*Also available: Performance/Accompaniment CD (99/2251H).

© 2008 Heritage Music Press, a division of The Lorenz Corporation. All rights reserved. Printed in U.S.A.

Unauthorized reproduction of this publication is a criminal offense subject to prosecution.

THE CCLI LICENSE DOES NOT GRANT PERMISSION TO PHOTOCOPY THIS MUSIC.

www.lorenz.com

13 2

Ag - nus De - i, qui tol - lis pec-ca - ta mun - di,  
 Ag - nus De - i, Ag - nus De - i,

17

Ag - nus De - i, qui tol - lis pec-ca - ta - mun - di,  
 Ag - nus De - i, Ag - nus De - i,

21 *cresc.* 3 tol - lis.

Ag - nus De - i, qui tol - lis pec-ca - ta mun - di.  
 Ag - nus De - i, qui tol - lis.

25 *mf*

Do - na no - bis pa - cem.

*mf*

no - bis

*mf*

29

Do - na no - bis pa - cem.

*mf*

*sub. p*

33

Do - na no - bis pa - cem. pa - cem.

*sub. p*

*p*

37 *mf* *cresc.* *S div. f*

Do - na - no - bis, Do - na no - bis

*mf* *cresc.* *f*

41 *poco rit.*

pa - cem, pa - cem, Do - na no - bis

*poco rit.* *f*

45 4 *a tempo*

pa - cem. Ag - nus De - i, qui

*a tempo* *f*