

There's Room for Many-a More!

(incorporating *This Train*, *Get On Board, Little Children*
(*The Gospel Train*), and *New River Train*)

SATB Chorus and Piano*

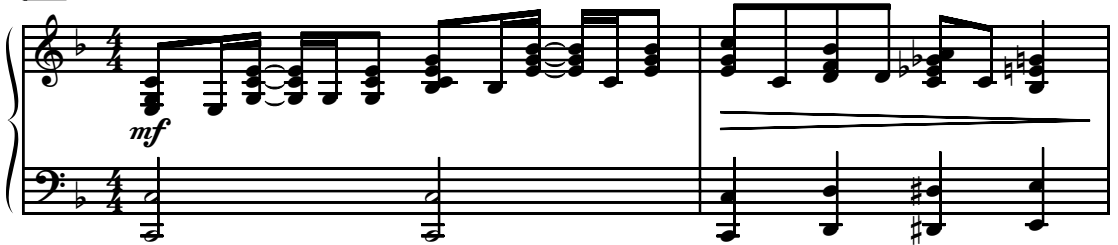
Trad., alt.

Traditional Spirituals
and American Folk Song
Arranged by Greg Gilpin

Ranges: Soprano Alto Tenor Bass



1 With drive and energy ♩ = ca. 112



3 SA *mp*

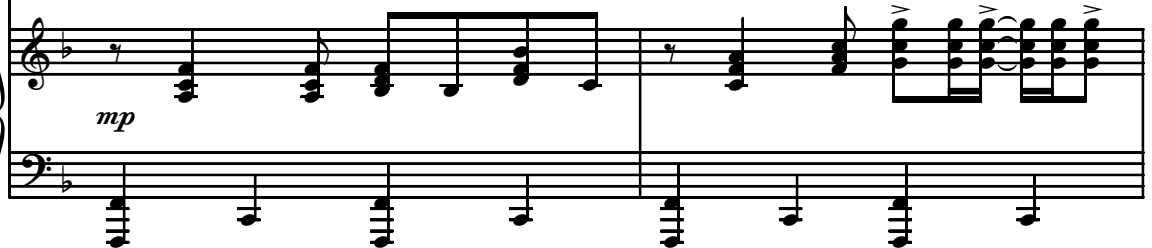


This train is bound for glo - ry, this train. _____

TB *mp*



mp



Duration: approx. 2:20

*Also available: Three-part Mixed/SAB (15/2397H); Two-part (15/2381H);
Performance/Accompaniment CD (99/2250H).

© 2008 Heritage Music Press, a division of The Lorenz Corporation. All rights reserved. Printed in U.S.A.
Unauthorized reproduction of this publication is a criminal offense subject to prosecution.

THE CCLI LICENSE DOES NOT GRANT PERMISSION TO PHOTOCOPY THIS MUSIC.

5

This train is bound for glo - ry, this train.

7

This train is bound for glo - ry, don't ride noth-in' but the good and ho - ly!

sub. p

9

② *mp*

This train is bound for glo - ry, this train.

mp *mf*

Get on

mp *mf*

11 *mf*

Get on board, lit - tle chil-dren. Get on

board, lit - tle chil-dren. Get on

13

board, lit - tle chil-dren. There's room for man-y-a more.

Get on

15

Get on board. Get on board, lit - tle chil-dren. Get on

board, lit - tle chil-dren. Get on board. Get on

17

board, lit - tle chil - dren. There's room for man - y - a

19

3 *cresc.*

more... *cresc.* *mf* I'm

21

mf

mf Rid - in' that New Riv - er Train. Rid-in' that, rid - in' that New Riv - er Train. I'm

23

rid - in' that New Riv - er Train, rid-in' that.

rid - in' that New Riv - er Train.

25

Glo - ry bound, good and ho - ly,

Same old train that brought me here gon - na

27

bring me back home a - gain! Get on

4

f

f