

# The Hands of Winter

SSA Chorus and Piano\*

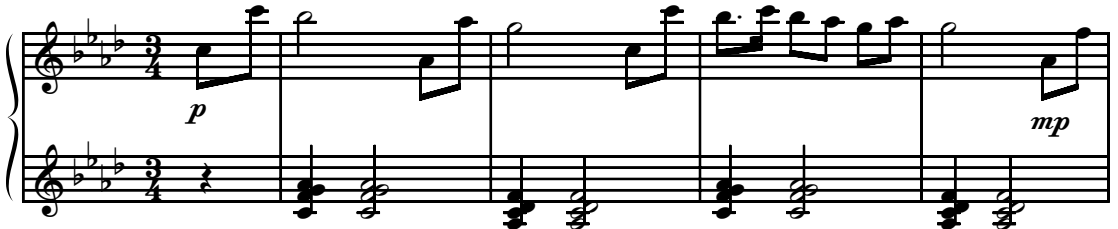
John Parker

Mark Hayes

Ranges: Soprano I    Soprano II    Alto



1 Expressively, with freedom ♩ = 76



Duration: approx. 2:50

\*Also available: SATB (15/2472H); SAB (15/2474H); Performance/Accompaniment CD (99/2328H).

© 2008 Heritage Music Press, a division of The Lorenz Corporation. All rights reserved. Printed in U.S.A.  
Unauthorized reproduction of this publication is a criminal offense subject to prosecution.

THE CCLI LICENSE DOES NOT GRANT PERMISSION TO PHOTOCOPY THIS MUSIC.

www.lorenz.com

13

qui - et lake and riv - er, fro - zen fin - gers send a

qui - et lake and riv - er, fro - zen fin - gers send a

16

*mf*

*mf*

shiv - er. Reach - ing out - ward with ag - gres - sion,

shiv - er. Reach - ing out - ward with ag - gres - sion,

19

②

*mp* *rit.* *mf*

win - ter's hands now take pos - ses - sion. Bit - ter

*mp* *rit.* *mf*

win - ter's hands now take pos - ses - sion. Bit - ter

*mp* *rit.* *mf*

22 *a tempo*

winds no more are wait - ing, au-tumn's col - ors 'round us

winds no more are wait - ing, au-tumn's col - ors 'round us

*a tempo*

25 *f*

fad - ing. Feel the breez - es wrap a - round you,

fad - ing. Feel the breez - es wrap a - round you,

*f*

28 *mf* *poco rit.* *mp a tempo*

now the win-ter's i - cy hands have found you.\_\_\_\_\_

now the win-ter's i - cy hands have found you.\_\_\_\_\_

*mf* *poco rit.* *mp a tempo*

*mf* *poco rit.* *mp a tempo*

31 3

Spring-time

Spring-time

34

ap - ple blooms are show - ing, sum - mer dai - sies 'round us

ap - ple blooms are show - ing, sum - mer dai - sies 'round us

37 *mf*

grow - ing. Au-tumn's crim - son in - ven - to - ry,

grow - ing. Au-tumn's crim - son in - ven - to - ry,

*mf*

4

40

*mp* *p* *mp* **Slightly faster**

win - ter steals a - way its glo - ry. By

win - ter steals a - way its glo - ry. By

*mp* *p* *mp*

**Slightly faster**

44

win - ter's hands, all is made

win - ter's hands, all is made

49

*mf* *mf* *mf*

white. Cold as she

white. Cold as she