

O Clap Your Hands

SATB Chorus and Piano*

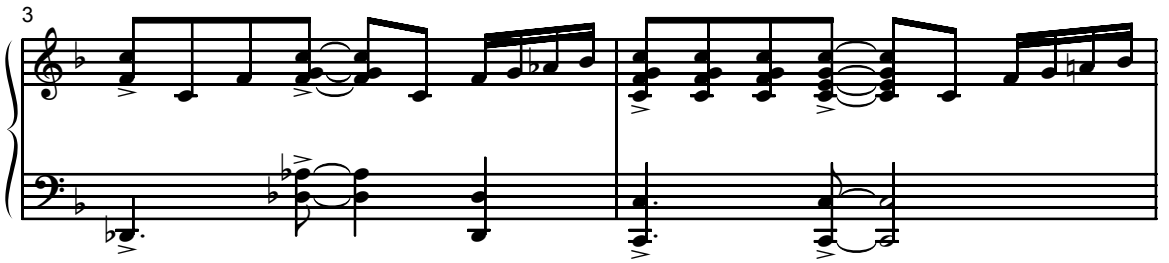
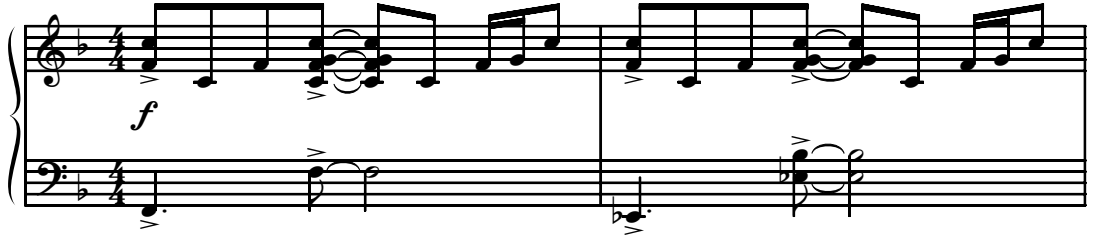
Adapted from Psalm 47

Stephen L. Lawrence

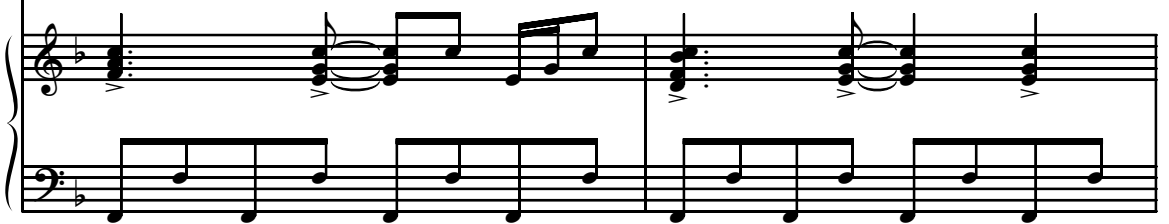
Ranges: Soprano Alto Tenor Bass



① With intensity ♩ = 138-144



5 SA *f*
 O clap your hands— all ye peo - ple, sing to the Lord!—
 TB *f*



Sua -----

Duration: approx. 2:50

*Also available: Performance/Accompaniment CD (99/2379H).

© 2009 Heritage Music Press, a division of The Lorenz Corporation. All rights reserved. Printed in U.S.A.
 Unauthorized reproduction of this publication is a criminal offense subject to prosecution.

THE CCLI LICENSE DOES NOT GRANT PERMISSION TO PHOTOCOPY THIS MUSIC.

www.lorenz.com

7

9

Shout and re - joice, — sound the trum - pet, sing to the Lord, —

8va

11

sing to the Lord! —

Re -

8va

13 *leggiero*

joice tri - umph - ant - ly, praise him joy - ful - ly,

leggiero

leggiero

15 2

glo - ry be — to his name.

17

Clap your hands — and shout, hear the rocks — cry out,

19 might - y is his reign,

might - y is his his reign, praise his
 might - y is his his reign, praise his his

might - y is his reign,

21 praise his name!

name, name! praise his

praise his name, praise his

23 name! Sing to the Lord!

name!

fp

26 3

28 SA *mp* with a hushed energy

Clap your hands, — clap your hands, —

mp

no pedal

30

re - jice and sing to the Lord. —

32 TB *mp* with a hushed energy

Let prais - es ring — to hon - or the King, —

34 SA *mf* Ye peo - ple,
TB *mf* re - joice and sing to the Lord. _____
f *mf*
pedal as needed

36 now lift your voi - ces in tri - umph,

38 *fp* ④ God has gone up with a shout! _____
fp
f