

# Beachcombers

Laura Feldman  
Amy F. Bernon

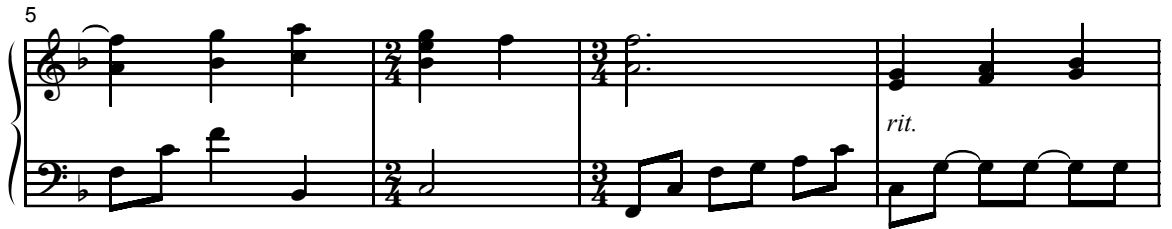
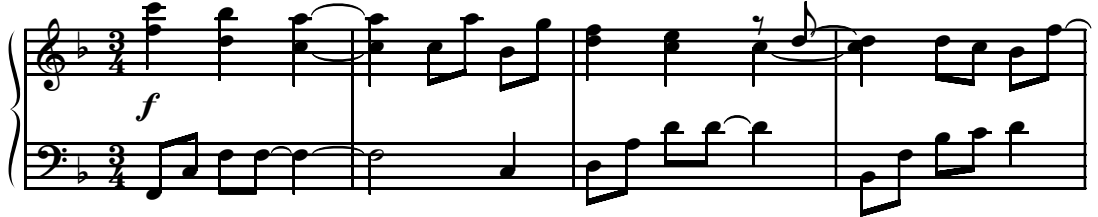
SSAB Chorus and Piano\*

Amy F. Bernon

Ranges: Soprano I Soprano II Alto Baritone



① **Flowing** ♩ = 116



9 **SI** *mf a tempo*  
Come with me \_\_\_\_\_ to the sea \_\_\_\_\_

**SII** *mf a tempo*  
Come with me \_\_\_\_\_ to the sea \_\_\_\_\_

**A** *mf a tempo*  
Come with me \_\_\_\_\_ to the sea \_\_\_\_\_

**B** *mf a tempo*  
Come with me \_\_\_\_\_ to the sea \_\_\_\_\_

Duration: approx. 3:15

\*Also available: SATB (15/2538H); Performance/Accompaniment CD (99/2410H).

© 2009 Heritage Music Press, a division of The Lorenz Corporation. All rights reserved. Printed in U.S.A.  
Unauthorized reproduction of this publication is a criminal offense subject to prosecution.

THE CCLI LICENSE DOES NOT GRANT PERMISSION TO PHOTOCOPY THIS MUSIC.

13

where the light, it flows, flows from the

where the light, it flows, flows from the

where the light, it flows, flows from the

where the light, it flows, flows from the

17

sky - blue sky, a lul - la-by. The

sky - blue sky, a lul - la-by. The

sky - blue sky, a lul - la-by.

sky - blue sky, a lul - la-by.

21

sea is a song of the shift - ing sand,  
 sea is a song of the shift - ing sand,  
 of your  
 of your

25

fa - ther's voice, your moth - er's hand,  
 fa - ther's voice, your moth - er's hand,

29 2 *p*

guid - ing you back to shore.

guid - ing you back to shore.

guid - ing you — back to shore.

guid - ing you — back to shore.

*(mf)*

33 *mf*

Come with me —

Come with me — *mf*

Come — with *mf*

Come with

37

and you'll see \_\_\_\_\_ what treas - ures there are to  
 and you'll see \_\_\_\_\_ what treas - ures there are to  
 me and you'll \_\_\_\_\_ see treas - ures to  
 me and you'll \_\_\_\_\_ see treas - ures to

41

find, \_\_\_\_\_ left be - hind by the tide, \_\_\_\_\_ the  
 find, \_\_\_\_\_ left be - hind by the tide, \_\_\_\_\_ the  
 find, \_\_\_\_\_ to \_\_\_\_\_ find. \_\_\_\_\_ by \_\_\_\_\_ the  
 find. \_\_\_\_\_ by the