

The American Creed

SATB Chorus and Piano* with optional Brass Quartet**

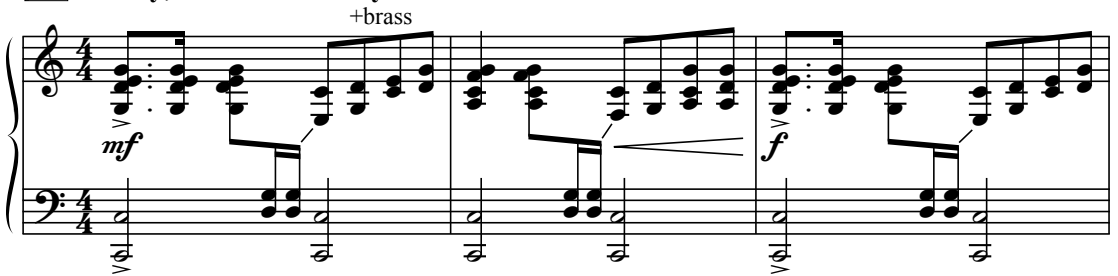
William Tyler Page, alt.***

Donald Moore

Ranges: Soprano Alto Tenor Bass



① Stately, with defined rhythm ♩ = ca. 69



4 SA *mf* 3

I be-lieve in the U - nit - ed States of A -

TB *mf* 3

-brass

Duration: approx. 2:45

*Also available: Three-part Mixed/SAB (15/2686H); TTb/TTBB (15/2665H); Performance/Accompaniment CD (99/2581H).

**Brass Quartet Parts (B♭ Trumpets I & II; Trombones I & II) are available as a free download.

Visit www.lorenz.com and search for 15/2664H.

***Statement accepted by the United States House of Representatives on April 3, 1918.

© 2010 Heritage Music Press, a division of The Lorenz Corporation. All rights reserved. Printed in U.S.A.

Unauthorized reproduction of this publication is a criminal offense subject to prosecution.

THE CCLI LICENSE DOES NOT GRANT PERMISSION TO PHOTOCOPY THIS MUSIC.

www.lorenz.com

cresc. poco a poco

7

mer - i - ca _____ as a

cresc. poco a poco

Detailed description: This block contains the vocal line for measures 7 and 8. The melody starts on a half note 'mer' followed by a dotted half note 'i - ca'. A long horizontal line indicates a sustained note for the word 'as'. The music is in a 4/4 time signature with a treble clef.

cresc. poco a poco

Detailed description: This block contains the piano accompaniment for measures 7 and 8. The right hand features a rhythmic pattern of eighth notes, while the left hand plays a steady bass line. A crescendo hairpin is present.

9

gov - ern - ment _____ of the peo - ple, by the peo - ple, _____ and for the

Detailed description: This block contains the vocal line for measures 9 and 10. The melody consists of eighth notes for 'gov - ern - ment' and 'of the peo - ple', followed by a half note 'by the peo - ple' and another eighth note phrase 'and for the'. A long horizontal line indicates a sustained note.

+brass

Detailed description: This block contains the piano accompaniment for measures 9 and 10. The right hand has a more complex rhythmic pattern with eighth and sixteenth notes. A '+brass' annotation is placed above the staff. A crescendo hairpin is present.

2

11

peo - ple;

f

Detailed description: This block contains the vocal line for measure 11. The melody is a half note 'peo - ple;'. A dynamic marking of *f* (forte) is present. A long horizontal line indicates a sustained note.

-brass

f

Detailed description: This block contains the piano accompaniment for measure 11. The right hand has a rhythmic pattern of eighth notes. A '-brass' annotation is placed above the staff. A dynamic marking of *f* (forte) is present.

13 *mp*

whose just pow-ers are de-ri-ved

mp

whose just pow - ers are de - ri-ved _____ from the con-sent of the

15 *cresc.*

from the con-sent of the gov-erned; a de-moc - ra-cy

cresc.

gov - erned; _____ a de - moc - ra-cy in ³a re -

+brass

cresc. poco a poco

17 *mf* *f* ③

in a re-pub - lic; a sov-'reign na - tion of man - y sov-'reign

mf *f*

pub - lic; _____

19 *mp* 3

states; a per-fect un - ion, one and in -

mp

a per-fect un - ion,

21 *cresc. poco a poco*

sep - 'ra-ble; es - tab-lished up-on these prin-ci-ples— of

cresc. poco a poco

one and in-sep - 'ra-ble; es-tab-lished up-on these prin-ci-ples—

23

free - dom, and e - qual - i - ty, — jus-tice and hu-

— of free - dom, — and e - qual - i - ty,

25 *mf* *more intense* *cresc.* 4

man - i - ty ——— for which A - mer - i - can pa - triots sac - ri - ficed their lives — and their

mf *more intense* *cresc.*

27 *f* *ff rall.* *sub. mp* ₃

for - tunes. This is A - mer - i - ca! ——— This is A -

f *ff rall.* *sub. mp*

f *ff rall.* -brass

30 *a tempo* 5

mer - i - ca! ———

a tempo

mp a tempo