

The American Creed

TTB/TTBB Chorus and Piano* with optional Brass Quartet**

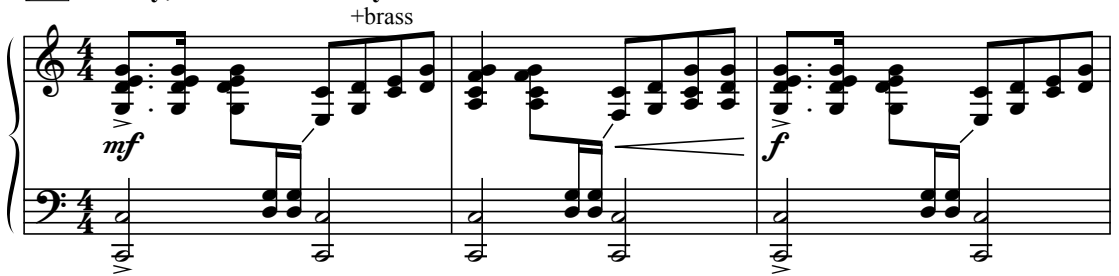
William Tyler Page, alt.***

Donald Moore

Ranges: Tenor I Tenor II Baritone/Bass



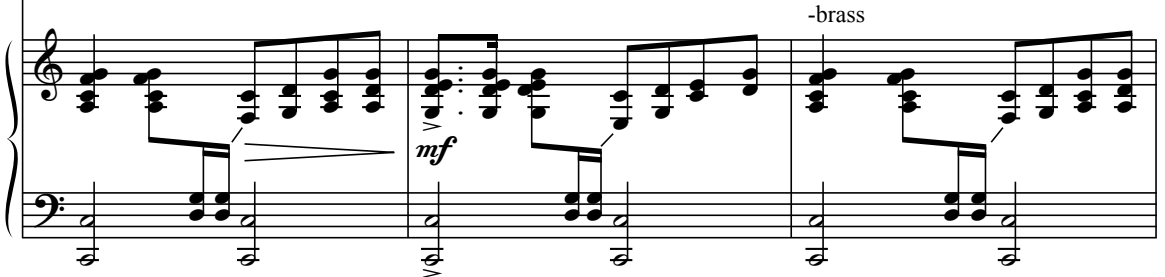
① Stately, with defined rhythm ♩ = ca. 69



4 TI, TII *mf* 3

I be-lieve in the U - nit - ed States of A -

B/B *mf* 3



Duration: approx. 2:45

*Also available: SATB (15/2664H); Three-part Mixed/SAB (15/2686H); Performance/Accompaniment CD (99/2581H).

**Brass Quartet Parts (B♭ Trumpets I & II; Trombones I & II) are available as a free download.

Visit www.lorenz.com and search for 15/2665H.

***Statement accepted by the United States House of Representatives on April 3, 1918.

© 2010 Heritage Music Press, a division of The Lorenz Corporation. All rights reserved. Printed in U.S.A. Unauthorized reproduction of this publication is a criminal offense subject to prosecution.

THE CCLI LICENSE DOES NOT GRANT PERMISSION TO PHOTOCOPY THIS MUSIC.

www.lorenz.com

cresc. poco a poco

7
 mer - i - ca _____ as a
cresc. poco a poco

cresc. poco a poco

9
 gov - ern - ment _____ of the peo - ple, by the peo - ple, _____ and for the

+brass

2

11 **f**
 peo - ple;

-brass

13 *mp*

whose just pow-ers are de-ri-ved

mp

whose just pow - ers are de - ri-ved from the con-sent of the

15 *cresc.*

from the con-sent of the gov-erned; a de-moc - ra-cy

cresc. *mf*

gov - erned; a de - moc - ra-cy in ³a re -

+brass

cresc. poco a poco

17 *mf* *f* ③

in a re-pub - lic; a sov-'reign na - tion of man - y sov-'reign

mf *f*

pub - lic;

19 *mp* 3 *mp* 3

states; a per-fect un - ion, one and in -

a per-fect un - ion,

mp

21 *cresc. poco a poco* *cresc. poco a poco*

sep - 'ra-ble; es - tab-lished up-on these prin-ci-ples— of

one and in-sep - 'ra-ble; es-tab-lished up-on these prin-ci-ples—

cresc. poco a poco

23

free - dom, and e - qual - i - ty, jus-tice and hu-

— of free - dom, and e - qual - i - ty,

25 *mf* *more intense* *cresc.* 4

man - i - ty ——— for which A - mer - i - can pa - triots sac - ri - ficed their lives — and their

mf *more intense* *cresc.*

27 *f* *ff rall.* *sub. mp* ₃

for - tunes. This is A - mer - i - ca! ——— This is A -

f *ff rall.* *sub. mp* -brass

30 *a tempo* 5

mer - i - ca! ———

mp a tempo