

Joshua Fit the Battle

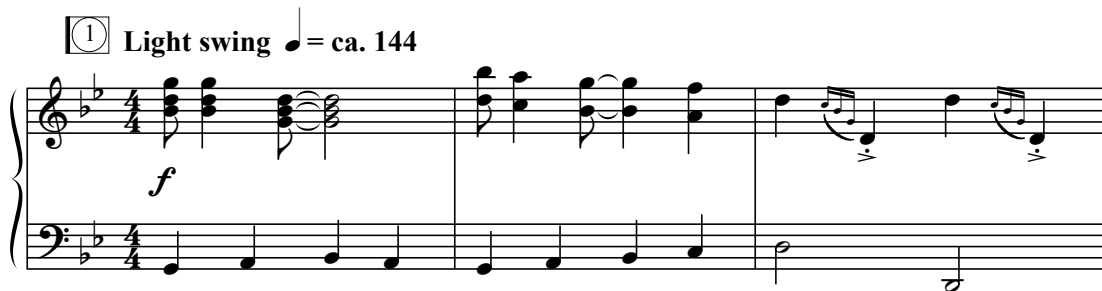
SSAA Chorus and Piano*

Traditional Spiritual
Arranged by Earlene Rentz

Ranges: Soprano I Soprano II Alto I Alto II



① Light swing ♩ = ca. 144



4

SI, SII *mf*

Josh - ua fit the bat - tle of — Jer - i - cho, —

AI, AII *mf*

Josh - ua fit the bat - tle of — Jer - i - cho, —

mf

Duration: approx. 1:45

*Also available: Performance/Accompaniment CD (99/2589H)

© 2010 Heritage Music Press, a division of The Lorenz Corporation. All rights reserved. Printed in U.S.A.
Unauthorized reproduction of this publication is a criminal offense subject to prosecution.

THE CCLI LICENSE DOES NOT GRANT PERMISSION TO PHOTOCOPY THIS MUSIC.

7

Jer - i - cho,___ Jer - i - cho,___

Jer - i - cho,___ Jer - i - cho,___

9

Josh - ua fit the bat - tle of___ Jer - i - cho,___ and the

Josh - ua fit the bat - tle of___ Jer - i - cho,___ and the

11

walls came tum - b'lin' down. tum - "buh" - lin' down. ___

walls came tum - b'lin' down. tum - "buh" - lin' down. ___

walls came tum - b'lin' down.

13 *mp*
 Josh-u - a, Josh - u - a, Josh - u - a,—
f
 You may talk a-bout your kings of Gid - e - on, you may

16 *cresc.*
 Josh-u - a, Josh - u - a, Josh - u - a,— Josh-u - a, Josh - u - a,
 talk a-bout your men of Saul, but there's none like good ol'

19 *f*
 Josh - u - a— at the bat-tle of Jer - i - cho. 3
f
 Josh - u - a,— the bat-tle of Jer - i - cho.—
 Josh - u - a— at the bat-tle of Jer - i - cho.

22 *mf*
 Josh - u - a,
mf
f Josh-ua fit the bat-tle of — Jer - i - cho, —
mf

25 (a few voices on top note)
 Josh - u - a, ————— Josh - u -
 Jer - i - cho, — Jer - i - cho, — Josh-ua fit the bat - tle of —
f

28 *f* and the walls came
 a, *f* and the walls came tum - b'lin'
f and the walls came
 Jer - i - cho, — and the walls came tum - b'lin'
f

30 4 tum-“buh”-lin’ down, — *p*

down, and the *p*
 tum-“buh”-lin’ down, — *p*
 down, and the

sub. p

32 *mf*

walls came tum - “buh”-lin’ down, the *mf*
 walls came tum - “buh”-lin’ down, the *mf*

34 *f*

walls came tum - “buh”-lin’ down, the *f*
 walls came tum - “buh”-lin’ down, the *f*

mf