

Be Glad This Festive Day

(A Winter Roundelay)

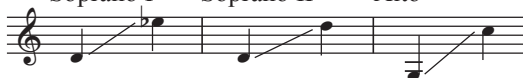
SSA Chorus and Piano* with optional Percussion (Drum, Tambourine, Finger Cymbals)**

Words and Music by

Douglas E. Wagner

Incorporating the Welsh carol *Deck the Hall*

Ranges: Soprano I Soprano II Alto



① Moderately, with a stately feel ♩ = ca. 92

Drum *mp*

Tambourine *mp*

Finger Cymbals

5 SI, SII *mf*

A *mf*

Let

Let

mp

Duration: approx. 2:10

*Also available: Three-part Mixed (15/2797H) and TB (15/2799H);

Performance/Accompaniment CD (99/2779H).

**Percussion parts are available as a free download. Visit www.lorenz.com and search "15/2798H".

PERFORMANCE NOTES: Acoustic or digital Harpsichord may be substituted for Piano with good effect. The drum used may be any Renaissance-style instrument. Large or medium Tom-Tom (with sticks or hard mallets) will work well. Tenor Drum or Snare Drum (with the snares off) are also acceptable choices.

© 2011 Heritage Music Press, a division of The Lorenz Corporation. All rights reserved. Printed in U.S.A.

Unauthorized reproduction of this publication is a criminal offense subject to prosecution.

9

mu - sic fill this hap - py room, a live - ly roun - de - lay, as

mu - sic fill this hap - py room, a live - ly roun - de - lay, as

13

we dis-patch cold win-ter's gloom and keep the wind at bay. Re -

we dis-patch cold win-ter's gloom and keep the wind at bay. Re -

17 *f* Re-joyce, re - joyce,

joyce, re - joyce, be glad this fes-tive day. Re -

joyce, re - joyce, be— glad, be glad this fes-tive day. Re -

mf

mf

21 Re - joyce, re - joyce, 2

joyce, re - joyce, cast— care a - way. Take

joyce, re - joyce, and— cast all care— a - way. Take

25

up the pipe, a - wake the string, and loud your car - ols sing; This
up the pipe, a - wake the - string, and loud your car - ols sing; This

The musical score for measures 25-28 consists of two vocal staves and a piano accompaniment. The vocal staves are in a soprano and alto register, both in a key signature of one flat (B-flat major or D minor). The piano accompaniment features a right hand with a melodic line of eighth and sixteenth notes, and a left hand with a bass line of chords and single notes. The lyrics are: "up the pipe, a - wake the string, and loud your car - ols sing; This" for both parts.

29

frost - y night we'll bring de - light with all our rev - el - ing. Re -
frost - y night we'll bring de - light with all our rev - el - ing. Re -

The musical score for measures 29-32 continues with two vocal staves and piano accompaniment. The vocal staves have the lyrics: "frost - y night we'll bring de - light with all our rev - el - ing. Re -" for both parts. The piano accompaniment maintains the same melodic and harmonic patterns as the previous section.

33 Re-joyce, re-joyce,

joyce, re - joyce, be glad this fes-tive day. Re -

joyce, re - joyce, be_ glad, be glad this fes-tive day. Re -

37 Re-joyce, re-joyce,

joyce, re - joyce, cast_care a - way.

joyce, re - joyce, and_ cast all care_ a - way.