

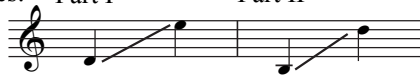
# Gaudeamus Hodie!

Traditional Latin

Two-part Chorus and Piano\*

Music by  
Mary Lynn Lightfoot

Ranges: Part I Part II



① **Steadily, with marked energy** ♩ = 76-80

4 Hand Claps:

7 Hand Claps:

I *f* Gau-de - a - mus! Gau-de - a - mus! Gau - de - a - mus

II *f* Gau-de - a - mus! Gau-de - a - mus! Gau - de - a - mus

Duration: approx. 1:55

\*Also available: Three-part Mixed/SAB (15/2953H); Performance/Accompaniment CD (99/3087H).

© 2014 Heritage Music Press, a division of The Lorenz Corporation. All rights reserved. Printed in U.S.A.  
Unauthorized reproduction of this publication is a criminal offense subject to prosecution.

THE CCLI LICENSE DOES NOT GRANT PERMISSION TO PHOTOCOPY THIS MUSIC.

www.lorenz.com

10

I  
ho - di - e! Gau-de - a - mus! Gau-de - a - mus

II  
ho - di - e! Gau-de - a - mus! Gau-de - a - mus

13

I  
ho - di - e! Gau-de - a - mus ho - di - e!

II  
ho - di - e! Gau-de - a - mus ho - di - e!

16

I  
Gau-de - a - mus ho - di - e! Al - le - lu -

II  
Gau-de - a - mus ho - di - e! Al - le - lu -

The piano accompaniment consists of a treble and bass staff. The treble staff features a series of chords and a melodic line starting in the third measure. The bass staff provides a harmonic foundation with chords and a simple bass line.

19

I  
ia! Al - le - lu - ia!

II  
ia! Al - le - lu - ia!

The piano accompaniment continues with chords and a melodic line in the treble staff, and a bass line in the bass staff. The texture is consistent with the previous measures.