

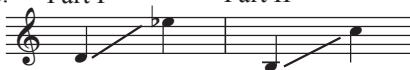
In Winter

Two-part Chorus and Piano*

Traditional, alt.
and Victor C. Johnson

Victor C. Johnson
Quoting STILL, STILL, STILL
Traditional German Carol

Ranges: Part I Part II



① Expressively ♩ = 80-84

4

I

II

mp

In — win-ter, as the sun fades a-way,

7

mp

I

II

and the sky turns from gold in - to gray, the

the

Duration: approx. 2:30

*Also available: Three-part Mixed (15/2994H); Performance/Accompaniment CD (99/3056H).

© 2013 Heritage Music Press, a division of The Lorenz Corporation. All rights reserved. Printed in U.S.A.
Unauthorized reproduction of this publication is a criminal offense subject to prosecution.

9

I
warmth of au - tumn has gone a - way

II
warmth of au - tumn has gone a - way

12

I
as we greet the new win - ter day.

II
as we greet the new win - ter day.

15

(2)

18 *mf*

I In — win - ter, as the moon shines so bright

II *mf*
In — win - ter, as the moon shines so bright

mf

20

I and the stars cast a sil - ver - y light, the

II and the stars cast a sil - ver - y light, the

22

I ground lies — hushed be-neath a shroud of white,

II ground lies hushed be-neath a shroud of white,

3

25 *rall.* *mf a tempo*

I Still, still,

II *mp* *rall.* *a tempo*
 on this calm and still win - ter night.

mp *rall.* *mf a tempo*

28

I still, you can hear the fall - ing snow.

II

31

I *mf* For all is hushed, the

II For all is hushed, the

lightly