

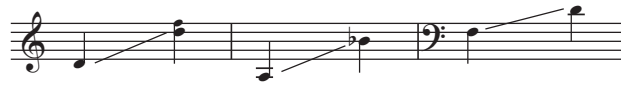
# Baby Born in Bethlehem

Three-part Mixed Chorus and Piano\*

Words adapted by Victor C. Johnson  
from Edward Caswall  
and John W. Work

Music by  
Victor C. Johnson

Ranges: Part I                      Part II                      Part III



① With excitement  $\text{♩} = \text{ca. } 63$

3 *mf*

I  
II  
III

*mf* Run, run, run— to the man - ger. Run, run, run,—

Duration: approx. 2:20

\*Also available: SATB (15/3228H); Performance/Accompaniment CD (99/3539H).

© 2015 Heritage Music Press, a division of The Lorenz Corporation. All rights reserved. Printed in U.S.A.

Unauthorized reproduction of this publication is a criminal offense subject to prosecution.

THE CCLI LICENSE DOES NOT GRANT PERMISSION TO PHOTOCOPY THIS MUSIC.

6

I  
II

— to the man - ger. — Run, run, run —

III

8

I  
II

— to the man - ger. There's a ba - by born — in

III

10

1. 2.

I  
II

Beth - le - hem. — Beth - le - hem. —

III

Beth - le - hem. — O won't you Beth - le - hem. —

4

12 *mp*

I See a - mid the win-ter snow. — Ba by born — in

II

III *mp*

*mp*

15 *mf*

I Beth-le - hem. — Born for us on earth be - low. —

II

III

*mf*

18 *mp*

I Ba - by born — in Beth - le - hem. —

II *mp*

III

*mp*

20 *mf*

I  
II

Run, run, run — to the man - ger.

III

*mf*

22

I  
II

Run, run, run, — to the man - ger. —

III

24

I  
II

Run, run, run — to the man - ger. There's a

III

6 3

26

I  
II

ba - by born in Beth - le - hem.

III

28

I  
II

Ba-by born in

III

Wise men trav - eled from a - far.

*mp*

31

I  
II

Beth - le - hem.

III

They were guid - ed by a

*mf*

4

33

I Ba - by born in

II

III bril - liant star.

*mp*

35

I Beth - le - hem. Oh, go, tell it on the

II

III

*f*

37

I moun - tain, o - ver the hills and

II

III

39 *opt. div.*

I  
II

ev - 'ry - where. Oh, go, and tell — it on the

III

41

I  
II

moun - tain — that there's a ba - by born — in

III

5

43

I  
II

Beth - le - hem. — *p*

III

O won't you run to the man - ger, come — *p*