

Singabahambayo

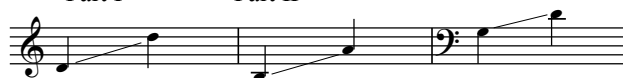
3

Three-part Mixed Chorus* and Cowbell, Shaker and Djembe or Ashiko**

Traditional

South African Folk Song
Arranged by Victor C. Johnson

Ranges: Part I Part II Part III



60 Rhythmically, with high energy ♩ = ca. 108

Cwb. $\frac{4}{4}$ *mf*

Sh. $\frac{4}{4}$ *mf*

Djm. $\frac{4}{4}$ *mf*

I $\frac{4}{4}$ *mf*
Sin-ga-ba-ham-ba - yo thi - na, ku-lom-hla - ba. — Ke-pha si-

II

III

Cwb.

Sh.

Djm.

Duration: approx. 2:50

*Also available: Performance/Accompaniment CD (99/3522H).

**Percussion parts are available as a free download. Visit www.lorenz.com and search for 15/3254H.

© 2015 Heritage Music Press, a division of The Lorenz Corporation. All rights reserved. Printed in U.S.A.
Unauthorized reproduction of this publication is a criminal offense subject to prosecution.

THE CCLI LICENSE DOES NOT GRANT PERMISSION TO PHOTOCOPY THIS MUSIC.

7

I
ne-kha - ya, — e - Zul-wi - ni. Sin-ga-ba - ham-ba - yo thi - na, ku-
mf

II
mf
Sin-ga-ba - ham-ba - yo thi - na, ku-

III
mf
Sin-ga-ba - ham-ba - yo thi - na, ku-

Cwb.

Sh.

Djm.

10

I
lom-hla - ba. — Ke-pha si - ne-kha - ya, — e - Zul-wi. Si - thi, —

II
lom-hla - ba. — Ke-pha si - ne-kha - ya, — e - Zul-wi - ni. — Ha-

III
lom-hla - ba. — Ke-pha si - ne-kha - ya, — e - Zul-wi - ni. — Ha-

Cwb.

Sh.

Djm.

19

I
le-lu - ya, ha-le-lu-ya, ha - le-lu - ya. On earth an ar-my is march - ing, we're

II
le-lu - ya, ha-le-lu-ya, ha - le-lu - ya. — We are march - ing,

III
le-lu - ya, ha-le-lu-ya, ha - le-lu - ya. — We are march - ing,

Cwb.

Sh.

Djm.

22

I
go - ing home, — our long - ing bears a song, — so

II
we are march - ing, we are march - ing, so

III
we are march - ing, we are march - ing, so

Cwb.

Sh.

Djm.

61

24

I
sing out strong! On earth an ar - my is march - ing, we're

II
sing out strong! - We are march - ing,

III
sing out strong! - We are march - ing,

Cwb.
Sh.
Djm.

26

I
go - ing home, - our long - ing bears a song, - so

II
we are march - ing, we are march - ing, so

III
we are march - ing, we are march - ing, so

Cwb.
Sh.
Djm.

28

I
sing out! Si - thi, _____ si - thi, _____ si - thi. Ha-

II
sing out strong!— Ha - le-lu - ya, — ha - le-lu - ya, — ha-

III
sing out strong!— Ha - le-lu - ya, — ha - le-lu - ya, — ha-

Cwb.

Sh.

Djm.

31

I
le-lu - ya, ha-le-lu-ya, ha - le-lu. Si - thi, _____ si - thi, _____

II
le-lu - ya, ha-le-lu-ya, ha - le-lu - ya. — Ha - le-lu - ya, — ha-

III
le-lu - ya, ha-le-lu-ya, ha - le-lu - ya. — Ha - le-lu - ya, — ha-

Cwb.

Sh.

Djm.

(62)

34

I
 — si - thi. Ha - le-lu - ya, ha-le-lu-ya, ha - le - lu - ya. — Ha-

II
 le-lu - ya, — ha - le-lu - ya, ha-le-lu-ya, ha - le - lu - ya. — Ha-

III
 le-lu - ya, — ha - le-lu - ya, ha-le-lu-ya, ha - le - lu - ya. — Ha-

Cwb.
 Sh.
 Djm.

37

I
 le - lu - ya, — ha - le - lu - ya, — ha - le-lu - ya, ha-le-lu-ya, ha-

II
 le - lu - ya, — ha - le - lu - ya, — ha - le-lu - ya, ha-le-lu-ya, ha-

III
 le - lu - ya, — ha - le - lu - ya, — ha - le-lu - ya, ha-le-lu-ya, ha-

Cwb.
 Sh.
 Djm.

40

I
le - lu - ya, ha - le - lu - ya, ha - le - lu - ya, ha -

II
le - lu - ya, ha - le - lu - ya, ha - le - lu - ya, ha -

III
le - lu - ya, ha - le - lu - ya, ha - le - lu - ya, ha -

Cwb.

Sh.

Djm.

43

I
le - lu - ya, ha - le - lu - ya, ha - le - lu - ya. — Ha - le - lu - ya. —

II
le - lu - ya, ha - le - lu - ya, ha - le - lu - ya. — Ha - le - lu - ya. —

III
le - lu - ya, ha - le - lu - ya, ha - le - lu - ya. — Ha - le - lu - ya. —

Cwb.

Sh.

Djm.

(63)