

Winter's Waking

SSA and Piano*

Words and Music by
Amy F. Bernon

① With a sense of mystery ♩ = ca. 96

Piano introduction in 4/4 time, key of D major. The music is marked *mf* and *mp*. It features a melody in the right hand and a bass line in the left hand.

4 SI *mp*
In a deep sky of on-yx,** Win-ter's wak-ing,

SII *mp*
In a deep sky of on-yx,** Win-ter's wak-ing,

A *mp*
In a deep sky of on-yx,** Win-ter's wak-ing,

Vocal and piano accompaniment for the first line of the song. The vocal parts (SI, SII, A) are in 4/4 time, key of D major, and are marked *mp*. The piano accompaniment is in 4/4 time, key of D major, and is marked *mp*. The lyrics are: "In a deep sky of on-yx,** Win-ter's wak-ing,".

Duration: approx. 2:20

*Also available: SATB (15/3401H); Three-part Mixed/SAB (15/2858H); Two-part (15/2864H);
Performance/Accompaniment CD (99/2918H).

**Pronounced ON-ix; *black onyx* is a precious stone.

© 2012, This arrangement © 2017 Heritage Music Press, a division of The Lorenz Corporation.
All rights reserved. Printed in U.S.A.

Unauthorized reproduction of this publication is a criminal offense subject to prosecution.

THE CCLI LICENSE DOES NOT GRANT PERMISSION TO PHOTOCOPY THIS MUSIC.

www.lorenz.com

7

fro - zen stars fall - ing from her hands. These stars are her on - ly

fro - zen stars fall - ing from her hands. These stars are her on - ly

fro - zen stars fall - ing from her hands. These stars are her on - ly

The musical score for measures 7-9 consists of three vocal staves and a piano accompaniment. The key signature is one sharp (F#) and the time signature is 4/4. The vocal parts are in unison, and the piano accompaniment provides harmonic support with chords and moving lines in both hands.

10

lone - ly com - pan - ions, fall - ing, fall - ing, fall - ing, fall - ing to the

lone - ly com - pan - ions, fall - ing, fall - ing, fall - ing,

lone - ly com - pan - ions, fall - ing, fall - ing, fall - ing,

The musical score for measures 10-12 continues with three vocal staves and piano accompaniment. The key signature remains one sharp (F#) and the time signature is 4/4. The vocal parts are in unison, and the piano accompaniment continues with harmonic support.

13 2 *mf*

sleep-ing lands. _____ She

mf

fall - ing to the sleep - ing lands. _____ She

mf

fall - ing to the sleep - ing lands. _____ She

16

fol - lows them down in her gown of frost. She

fol - lows them down in her gown of frost. She

fol - lows them down in her gown of frost. She

mf

19 3

rush-es by trees, and the limbs are tossed!

rush-es by trees, and the limbs are tossed!_____

rush-es by trees, and the limbs are tossed!_____

22 **Robustly** *f*

f She

f Wild, like the hors - es that race through the night, the

f Wild, like the hors - es that race through the night, the

Robustly *f*

24

gath - ers up her forc - es and chas - es the light a -
 night, _____
 night, _____ she

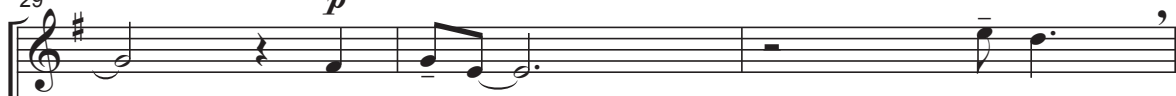
26

way, _____ *mp* *pp* Echo 4
 a-way, _____ a-way, _____ a-way, _____
 a-way, _____ a-way, _____ a-way, _____
 chas - es the light a-way, _____ *mp* *pp* Echo
 a-way, _____ a-way, _____ a-way, _____

hushed, but clear

29

p



Oh, Win-ter,—

Win-ter,

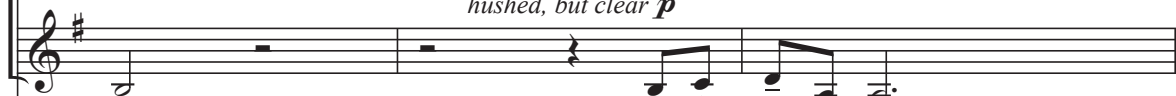
hushed, but clear p



Win-ter,

Win-ter,—

hushed, but clear p



Oh,— Win-ter,—

p



Leg.

*

Leg.

*

32

, mp



send your stars— and your snow-flakes down to me. Oh,



send your stars— and your snow-flakes down to me.



snow-flakes down to

