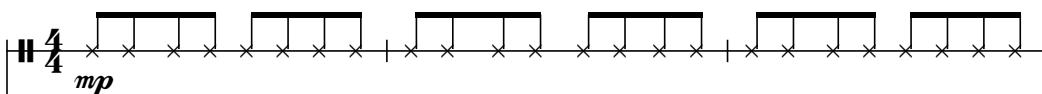


to Brandon

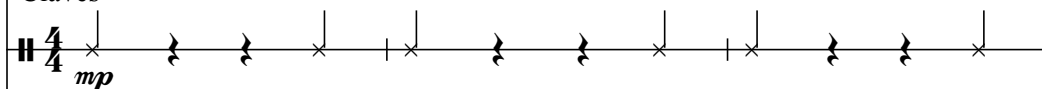
Tue TueThree-part or Four-part Equal Voices
with Piano* and Percussion**Traditional Ghanaian Folk Song**
Arranged by **Brian Hiller and Don Dupont**

77 Rhythmically, with forward motion ♩ = ca. 120

Maracas



Claves



Bongo Drums



Conga Drum



4

(Two-measure percussion patterns repeat to the end.)

Duration: approx. 2:00

*Also available: Accompaniment/Performance Pack (99/3774H).

© 2018 Heritage Music Press, a division of The Lorenz Corporation. All rights reserved. Printed in U.S.A.

Unauthorized reproduction of this publication is a criminal offense subject to prosecution.

Copying this music is illegal. A license from CCLI or OneLicense does not grant permission to copy.

7

mp

I

mp

II

mp

III

*Tu - e tu - e ba - ri - ma

*Tu - e tu - e ba - ri - ma

*Tu - e tu - e ba - ri - ma

10

I

tu - e tu - e. Tu - e tu - e ba - ri - ma tu - e tu - e. A - bo - fra

II

tu - e tu - e. Tu - e tu - e ba - ri - ma tu - e tu - e. A - bo - fra

III

tu - e tu - e. Tu - e tu - e ba - ri - ma tu - e tu - e. A - bo - fra

*Pronunciation Guide is available as a free download. Visit www.lorenz.com, search for "15/3548H", and click on the item image.

13

I
ba a - ma da - wa da - wa tu - e tu - e. A - bo - fra ba a - ma da - wa da - wa

II
ba a - ma da - wa da - wa tu - e tu - e. A - bo - fra ba a - ma da - wa da - wa

III
ba a - ma da - wa da - wa tu - e tu - e. A - bo - fra ba a - ma da - wa da - wa

16

I
tu - e tu - e. —

II
tu - e tu - e. —

III
tu - e tu - e. —

19 78

I
II
III

Tu - e tu - e ba - ri - ma

22

I
II
III

tu - e tu - e. Tu - e tu - e ba - ri - ma tu - e tu - e. A - bo - fra

Tu - e tu - e ba - ri - ma tu - e tu - e. Tu - e tu - e ba - ri - ma

Tu - e tu - e ba - ri - ma tu - e tu - e. Tu - e tu - e ba - ri - ma

25

I
ba a - ma da - wa da - wa tu - e tu - e. A - bo - fra ba a - ma da - wa da - wa

II
tu - e tu - e. A - bo - fra ba a - ma da - wa da - wa tu - e tu - e. A - bo - fra

III
tu - e tu - e. A - bo - fra ba a - ma da - wa da - wa tu - e tu - e. A - bo - fra

28 79

I
tu - e tu - e. —

II
ba a - ma da - wa da - wa tu - e tu - e. —

III
ba a - ma da - wa da - wa tu - e tu - e. — Tu - e — tu -

mf

mf

31

I

II

III

e ba-ri-ma. Tu - e — tu - e ba-ri-ma.

34 *mf*

I

II

III

Tu - e tu - e ba-ri-ma tu - e tu - e. Tu - e tu - e ba-ri-ma

mf

Tu - e tu - e ba-ri-ma tu - e tu - e.

Tu - e — tu - e ba-ri-ma. Tu - e — tu -