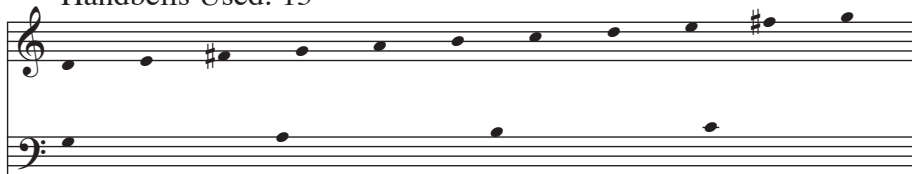


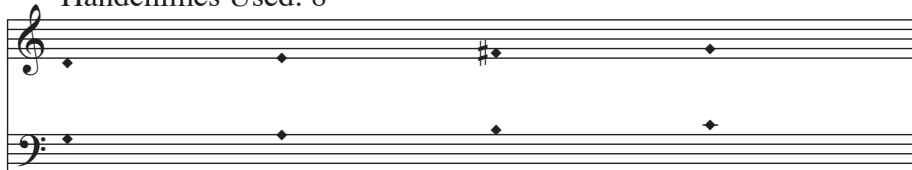
for the Handbell Choir, Grace and Peace Presbyterian Church, California, Maryland

# What Star Is This?

Handbells Used: 15



Handchimes Used: 8



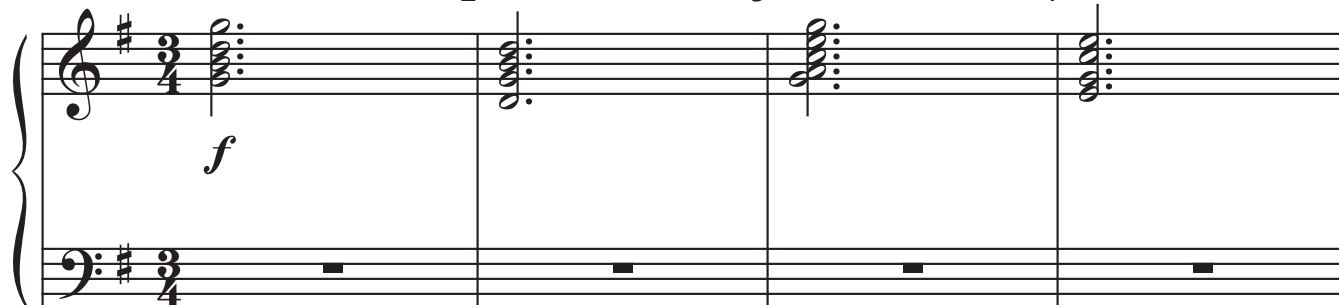
PUER NOBIS, 15th Century  
Arranged by LINDA R. LAMB

With a lilt  $\text{♩} = 56$

2

3

4

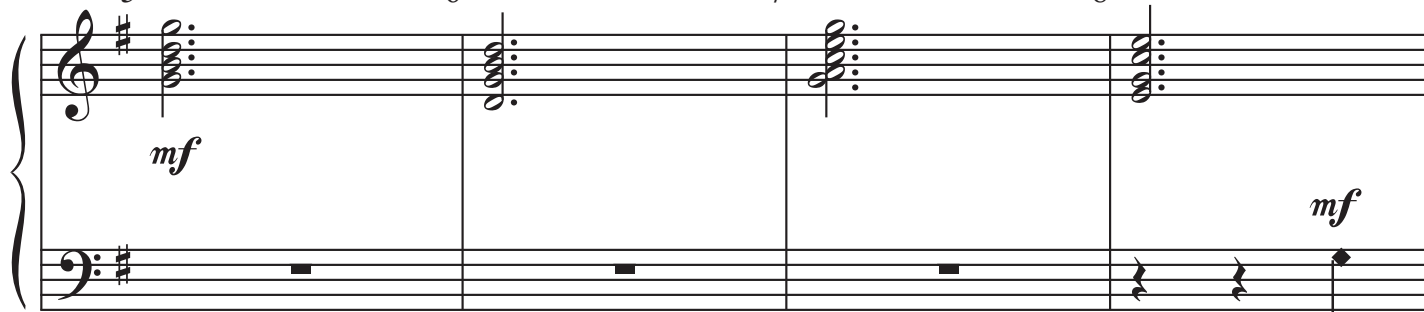


5

6

7

8



© 2014 SoundForth, a division of The Lorenz Corporation. All rights reserved. Printed in the U.S.A.

Reproduction of this publication without permission of the publisher is a criminal offense subject to prosecution.

THE CCLI LICENSE DOES NOT GRANT PERMISSION TO PHOTOCOPY THIS MUSIC.

9 *mp* 10 11 12

13 14 15 16

17 LV 18 LV 19 LV 20 LV

21 LV 22 LV 23 R 24

*f*

25 26 27 28

Measures 25-28 of a musical score in G major. Measure 25: Treble clef has a half note G4, bass clef has a half note G2. Measure 26: Treble clef has a half note A4, bass clef has a half note G2. Measure 27: Treble clef has a half note B4, bass clef has a half note G2. Measure 28: Treble clef has a half note C5, bass clef has a half note G2.

29 30 31 32

Measures 29-32 of a musical score in G major. Measure 29: Treble clef has a half note D5, bass clef has a half note G2. Measure 30: Treble clef has a half note E5, bass clef has a half note G2. Measure 31: Treble clef has a half note F#5, bass clef has a half note G2. Measure 32: Treble clef has a half note G5, bass clef has a half note G2. Dynamics: *decresc.* in measure 29, *mf* in measure 32. Arrows with '2' point to the bass clef in measures 29, 30, 31, and 32.

33 34 35 36

Measures 33-36 of a musical score in G major. Measure 33: Treble clef has a half note A4, bass clef has a half note G2. Measure 34: Treble clef has a half note B4, bass clef has a half note G2. Measure 35: Treble clef has a half note C5, bass clef has a half note G2. Measure 36: Treble clef has a half note D5, bass clef has a half note G2.

37 38 39 40

Measures 37-40 of a musical score in G major. Measure 37: Treble clef has a half note E5, bass clef has a half note G2. Measure 38: Treble clef has a half note F#5, bass clef has a half note G2. Measure 39: Treble clef has a half note G5, bass clef has a half note G2. Measure 40: Treble clef has a half note A5, bass clef has a half note G2.

41 42 43 44

Measures 41-44 of a musical score in G major. The treble clef contains a melody of quarter notes: G4 (41), A4 (42), B4 (43), and C5 (44). The bass clef contains a bass line of quarter notes: G2 (41), A2 (42), B2 (43), and C3 (44). The key signature has one sharp (F#).

45 46 47 48

Measures 45-48 of a musical score in G major. The treble clef contains a melody of quarter notes: D4 (45), E4 (46), F#4 (47), and G4 (48). The bass clef contains a bass line of quarter notes: D2 (45), E2 (46), F#2 (47), and G2 (48). The key signature has one sharp (F#).

49 50 51 52 53

Measures 49-53 of a musical score in G major. The treble clef contains a melody of quarter notes: A4 (49), B4 (50), C5 (51), D5 (52), and E5 (53). The bass clef contains a bass line of quarter notes: A2 (49), B2 (50), C3 (51), D3 (52), and E3 (53). The key signature has one sharp (F#).

54 55 56 57 58

Measures 54-58 of a musical score in G major. The treble clef contains a melody of quarter notes: F#4 (54), G4 (55), A4 (56), B4 (57), and C5 (58). The bass clef contains a bass line of quarter notes: F#2 (54), G2 (55), A2 (56), B2 (57), and C3 (58). The key signature has one sharp (F#).