

April



Sunday

Monday

Tuesday

Wednesday

Thursday

Friday

Saturday

1
April Fools Day

Sergei Rachmaninoff's birthday (1873)

2
On this day in 1977, Stevie Wonder's tribute to Duke Ellington, "Sir Duke," was released.

3
Passover begins

4 **PASSOVER**


5
Easter

6


7

8


9


10 Family Fun Night: Play the Lyric Game. Choose a word and challenge each team to see how many song **p**hrases with that word they can think of. Change the word and repeat.

11

12

13

14
On this day in 1960, the musical *Bye Bye Birdie* opened in New York City.


15


16


17
On this day in 1971, Three Dog Night's "Joy to the World" reached number 1 on the charts.

18


19


20
Luther Vandross's birthday (1951)


21



22
Earth Day

23
Sergei Prokofiev's birthday (1891)

24 Family Fun Night: Create a family theme song (there are great, free apps—such as Star Composer—to help) and learn it together.

25


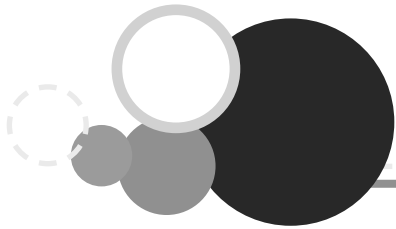
26

27


28


29
Duke Ellington's birthday (1899)

30



April



Sunday

Monday

Tuesday

Wednesday

Thursday

Friday

Saturday

1

April Fools Day

Sergei Rachmaninoff's birthday (1873)



2

On this day in 1977, Stevie Wonder's tribute to Duke Ellington, "Sir Duke," was released.

3

Passover begins

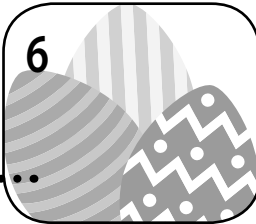
4 PASSOVER



5

Easter

6



7

8



9



10

Family Fun Night: Play the Lyric Game. Choose a word and challenge each team to see how many song phrases with that word they can think of. Change the word and repeat.

11

12

13

14

On this day in 1960, the musical *Bye Bye Birdie* opened in New York City.

15



16



17

On this day in 1971, Three Dog Night's "Joy to the World" reached number 1 on the charts.

18



19

20

Luther Vandross's birthday (1951)

21



22

Earth Day

23

Sergei Prokofiev's birthday (1891)

24

Family Fun Night: Create a family theme song (there are great, free apps—such as Star Composer—to help) and learn it together.

25



26

27



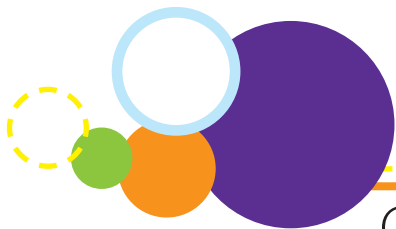
28



29

Duke Ellington's birthday (1899)

30



April



CALENDAR CONNECTIONS

Dear Families,

Have fun exploring music with your students this month. Here are some activities to get you started!

Mystery Music Term

Look carefully at the calendar, and find all of the letters in bold. Unscramble the letters to spell a music term.

Mystery Melody

Here is this month's Mystery Melody:



Try singing or playing the notes to see if you can identify this piece.

Featured Musician and Listening Examples

Sergei Rachmaninoff is this month's featured musician. You can learn about his life and music at <http://bit.ly/1fsIOdd>. Also, spend some time listening to this famous work:

- Listen to Rachmaninoff's *Prelude*, Op. 3, No. 2 and note how the eerie sounds of the piano turn into excitement and then end with gentleness.

Consider keeping a family music journal. Be sure to include the name of the composer, a list of his/her pieces, as well as your thoughts, feelings, and reactions to the music. Quality recordings of all featured musical works are available for purchase at <http://music4you.lorenz.com>.

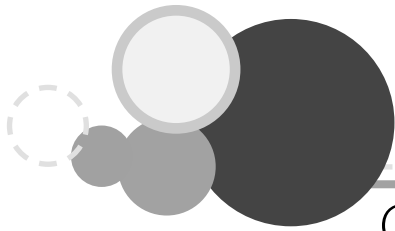
Family Music Connections for April 2015 Return this portion of the page to your music teacher.

Name(s): _____

Mystery Music Term: _____

Definition of Mystery Music Term: _____

The Mystery Melody for this month is: _____



April



CALENDAR CONNECTIONS

Dear Families,

Have fun exploring music with your students this month. Here are some activities to get you started!

Mystery Music Term

Look carefully at the calendar, and find all of the letters in bold. Unscramble the letters to spell a music term.

Mystery Melody

Here is this month's Mystery Melody:



Try singing or playing the notes to see if you can identify this piece.

Featured Musician and Listening Examples

Sergei Rachmaninoff is this month's featured musician. You can learn about his life and music at <http://bit.ly/1fsIOdd>. Also, spend some time listening to this famous work:

- Listen to Rachmaninoff's *Prelude*, Op. 3, No. 2 and note how the eerie sounds of the piano turn into excitement and then end with gentleness.

Consider keeping a family music journal. Be sure to include the name of the composer, a list of his/her pieces, as well as your thoughts, feelings, and reactions to the music. Quality recordings of all featured musical works are available for purchase at <http://music4you.lorenz.com>.

Family Music Connections for April 2015 Return this portion of the page to your music teacher.

Name(s): _____

Mystery Music Term: _____

Definition of Mystery Music Term: _____

The Mystery Melody for this month is: _____

April Mystery Term

r p o a e

