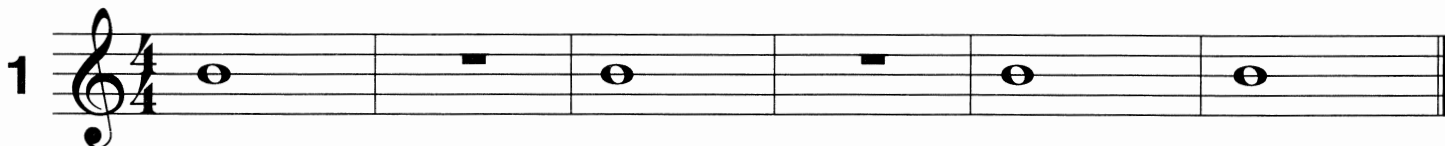
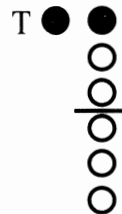
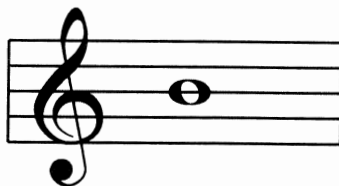
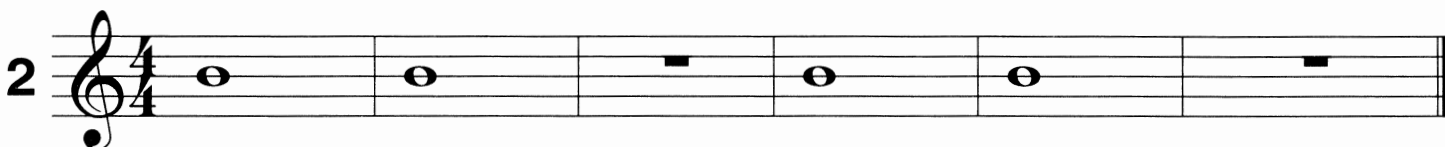


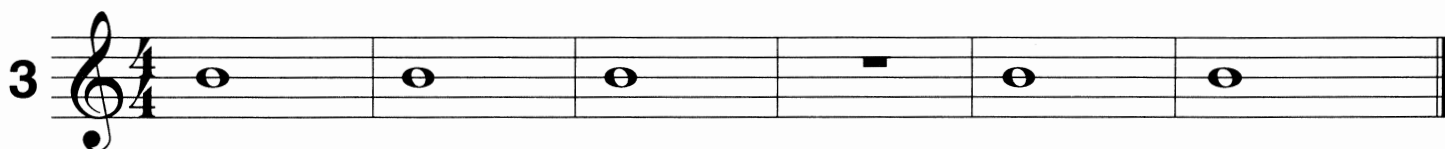
Let's Play B



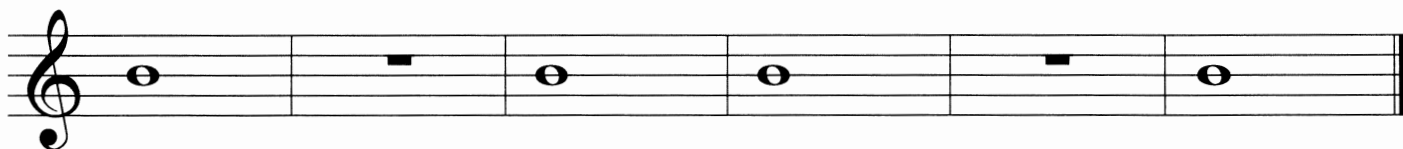
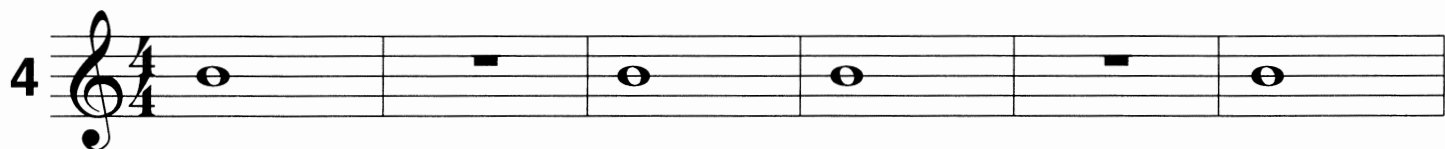
Tongue each note gently...Toooooo.



Play each whole note four counts.



① Cover the holes with the pads of your fingers.



WHOLE NOTE



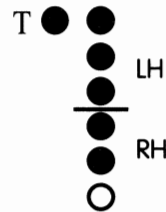
WHOLE REST



Complete!



A New Note: E



1 Musical staff 1: Treble clef, 4/4 time signature. Notes: G4, A4, B4, C5, B4, A4, G4, F4, E4.

E's and G's - Skips, Of Course!

2 Musical staff 2: Treble clef, 4/4 time signature. Notes: G4, A4, B4, C5, B4, A4, G4, F4, E4. *f*

Steps and Skips... Again

3 Musical staff 3: Treble clef, 2/4 time signature. Notes: G4, A4, B4, C5, B4, A4, G4, F4, E4. *f*

12 A Simple Song

4 Musical staff 4: Treble clef, 4/4 time signature. Notes: G4, A4, B4, C5, B4, A4, G4, F4, E4. Musical staff 5: Treble clef, 4/4 time signature. Notes: G4, A4, B4, C5, B4, A4, G4, F4, E4.










Patschin' and Clappin'

PT Musical staff 6: Treble clef, 2/4 time signature. Notes: G4, A4, B4, C5, B4, A4, G4, F4, E4. Musical staff 7: Treble clef, 2/4 time signature. Notes: G4, A4, B4, C5, B4, A4, G4, F4, E4.

Complete!

Pencils Please!

How many counts do each receive?


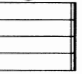



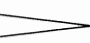




4  = _____  = _____  = _____
4  = _____  = _____  = _____
 = _____  = _____  = _____

Label the notes



1. _____ 2. _____ 3. _____ 4. _____ 5. _____ 6. _____ 7. _____ 8. _____

Match 'Em

1.  _____
2.  _____
3.  _____
4.  _____
5.  _____
6. **Allegro** _____
7.  _____
8.  _____
9.  _____
10.  _____
11. ***ff*** _____
12. ***mp*** _____
13.  _____
14. ***pp*** _____
15. **Presto** _____

- A = Medium Soft
- B = Rest 1 Count
- C = Double Bar
- D = Sharp
- E = 3 Counts
- F = Four Beats to a Measure
- G = Very Loud
- H = Fast
- I = Get Softer
- J = Tie
- K = Treble Clef
- L = Whole Note
- M = Very Fast
- N = Very Soft
- O = Get Louder

Complete!