

DRAWING A BASS CLEF/POP QUIZ #1

- ⇒ Encourage students to read the instructions carefully before completing the exercises on page 4 of the Student Book.
- ⇒ Review the steps for drawing a bass clef on the board.
- ⇒ Pop Quizzes appear periodically in the Student Book and help reinforce terms.
- ⇒ All terms included in the Pop Quizzes are also included in the Music Dictionary on page 32 of the Student Book.
- ⇒ Page 70 of the Teacher's Manual contains a reproducible Extra Practice Worksheet for exercises on pages 3 and 4 of the Student Book.
- ⇒ National Standard addressed on page 4 of the Student Book:
5. Reading and notating music

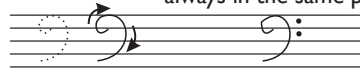
Lower notes are written in the **BASS CLEF**.

The bass clef sign looks like this: 

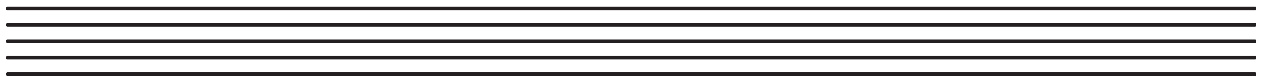
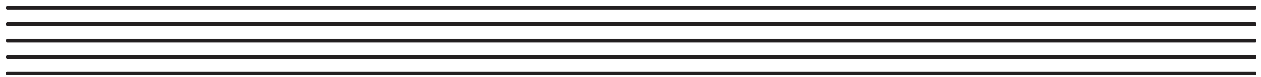
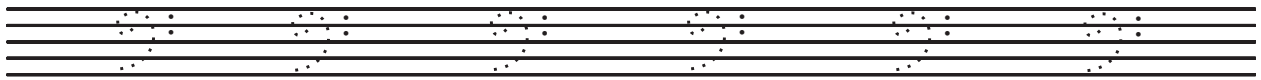
step 1:

step 2: add dots (they are always in the same place)

Here is how to draw a **BASS CLEF**.



3. Draw six bass clefs on each staff below.



POP QUIZ

- Music is written on a _____ of five lines and the four spaces between those lines.
- Higher notes are written in the _____ CLEF.
- Lower notes are written in the _____ CLEF.

KEYBOARD NOTE NAMES CHART

- ⇒ Review terms on page 5 with students. Note: A larger version of the chart on page 5 appears on page 2 of the Student Book and can be used as a reference by students to help reinforce note names.
- ⇒ Ask students to recite the letters of the musical alphabet forward (ABCDEFG) and backward (GFEDCBA). This helps with note reading.
- ⇒ Based on the “use it or lose it” theory, *Music Connections* requires students to sing or play on a regular basis. Help students identify and mark in their workbook the notes they can play on recorder, as well as the notes they can sing.
- ⇒ Explain that the notes they can sing constitute their vocal range. Reassure students (especially those with limited range) that the number of notes they can sing will increase as they get older.
- ⇒ National Standards addressed on page 5 of the Student Book:
 1. Singing, alone and with others, a varied repertoire of music
 2. Performing on instruments, alone and with others, a varied repertoire of music
 5. Reading and notating music

NOTES are symbols placed **ON** the lines and **IN** the spaces of the staff. Notes represent musical sounds called **PITCHES**. Each note has a name represented by one of the first seven letters of the alphabet: **A B C D E F G**. The names of the notes for each line and space of both **BASS** and **TREBLE** **CLEFS** are shown below. Also shown is a picture of a piano keyboard, with the keys for each note labeled. A larger version of this chart is shown on page 2.

The diagram illustrates the relationship between piano keys, note names, and musical notation. At the top, two rows of note names are shown: the first row contains sharps (F#, G#, A#, C#, D#, F#, G#, A#, C#, D#, F#, G#, A#, C#, D#, F#) and the second row contains flats (Gb, Ab, Bb, Db, Eb, Gb, Ab, Bb, Db, Eb, Gb, Ab, Bb, Db, Eb, Gb). Below these is a piano keyboard with black keys labeled with these names. Underneath the keyboard are two musical staves. The treble clef staff has notes on the lines (F, A, C, E, G) and in the spaces (A, C, E, G). The bass clef staff has notes on the lines (G, B, D, F, A) and in the spaces (A, C, E, G). A vertical label 'MIDDLE' is placed between the two staves.

4. Which of the notes can you play on recorder? Mark those notes with an **R** below.

Two musical staves are shown. The treble clef staff has notes on the lines (F, A, C, E, G) and in the spaces (A, C, E, G). The bass clef staff has notes on the lines (G, B, D, F, A) and in the spaces (A, C, E, G). A dashed line is drawn below the staves for marking.

5. Which of these notes can you sing? Mark those notes with an **S** below. Your teacher will help you do this part.

Two musical staves are shown. The treble clef staff has notes on the lines (F, A, C, E, G) and in the spaces (A, C, E, G). The bass clef staff has notes on the lines (G, B, D, F, A) and in the spaces (A, C, E, G). A dashed line is drawn below the staves for marking.