

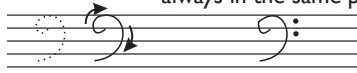
Lower notes are written in the **BASS CLEF**.

The bass clef sign looks like this: 

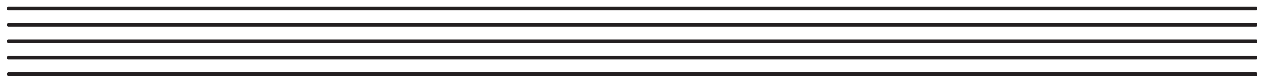
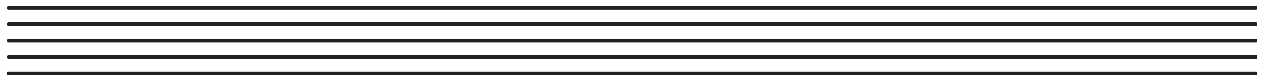
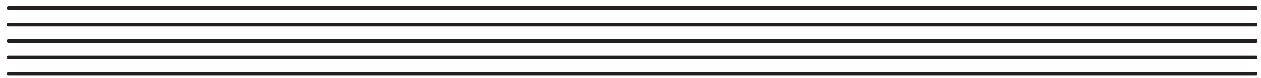
step 1:

step 2: add dots (they are always in the same place)

Here is how to draw a **BASS CLEF**.



3. Draw six bass clefs on each staff below.



## POP QUIZ

- Music is written on a \_\_\_\_\_ of five lines and the four spaces between those lines.
- Higher notes are written in the \_\_\_\_\_ CLEF.
- Lower notes are written in the \_\_\_\_\_ CLEF.

**NOTES** are symbols placed **ON** the lines and **IN** the spaces of the staff. Notes represent musical sounds called **PITCHES**. Each note has a name represented by one of the first seven letters of the alphabet: **A B C D E F G**. The names of the notes for each line and space of both **BASS** and **TREBLE** **CLEFS** are shown below. Also shown is a picture of a piano keyboard, with the keys for each note labeled. A larger version of this chart is shown on page 2.

4. Which of the notes can you play on recorder? Mark those notes with an **R** below.

5. Which of these notes can you sing? Mark those notes with an **S** below. Your teacher will help you do this part.