

# Let's Take a Sleigh Ride!

(Based on a Theme by Prokofiev)

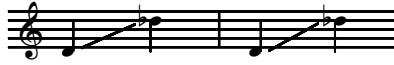
Two-part Chorus and Piano with Optional Sleigh Bells\*

Mark Weston

Mark Weston

Based on a theme from the *Lieutenant Kije Suite*  
by Sergei Prokofiev (1891-1953)

Ranges: Part I Part II



Lively; not too fast ♩ = ca. 120

①

Sleigh Bells

Sleigh Bells continue

*mp* *mf* *mf* *mf*

With cold down to our toes we

Lively; not too fast ♩ = ca. 120

*mf*

ride a - long, as win-ter winds nip and— blow. We are

ride a - long, as win-ter winds nip and— blow. We are

Duration: approx. 1:40

\*Sleigh Bells part is on page 9.

© 2007 Heritage Music Press, a division of The Lorenz Corporation. All rights reserved. Printed in U.S.A.

Unauthorized reproduction of this publication is a criminal offense subject to prosecution.

7 2

I  
on our way, — sing-ing as we go, o-ver fields of — glis - t'ning

II  
on our way, — sing-ing as we go, o-ver fields of — glis - t'ning

10

I  
snow.. Two hors-es pull the sleigh, a dap-ple and gray, their

II  
snow.. Two hors-es pull the sleigh, a dap-ple and gray, their

13

I  
bri - dle bells jin - gle a - way.

II  
bri - dle bells jin - gle a - way, as we

15

I We slide, we glide,

II slide and glide and whisk a - long the way on a

17

I all the way. We're

II hap - py De-cem - ber day.

Sleigh Bells rest

20

I whoosh - ing up and down the i - cy hills, a

II We're whoosh-ing up and down,

*Red.* \* *Red.* \*

22

I  
won - der - land of fro - zen de - light.. Our

II  
a won - der - land.

*Red.* \* *Red.* \*

24

I  
hands and feet now numb from the bit - ter chill, we'll warm by the

II  
we'll warm by the

*Red.* \* *Red.* \*

27

I  
fire to - night. With cold down to our toes we

II  
fire to - night. With cold down to our toes we

Sleigh Bells continue

for Jonathan

# Winterlight

Two-part Chorus and Piano\*

A.F.B.

Amy F. Bernon

Ranges: Part I Part II



Gently ♩ = 120

6 *8va* -----

*mp*

4 All voices *mf*

The gold - en leaves— of au - tumn have all

7

tum - bled to the ground,— and win - ter winds— are

Duration: approx. 3:10

\*Also available for Three-part Mixed (15/1884H).

© 2004 Heritage Music Press, a division of The Lorenz Corporation. All rights reserved. Printed in U.S.A.

Unauthorized reproduction of this publication is a criminal offense subject to prosecution.

THE CCLI LICENSE DOES NOT GRANT PERMISSION TO PHOTOCOPY THIS MUSIC.

10

blow - ing in— to toss them all— a-round.— There's a

*mf*

13

feel - ing in— the air to-day— that fall is done for sure.—

*mp*

16

There's a kind of light— that fills the sky,— I

*cresc.*

19

*cresc.* 7 *f*

I know I've seen it be - fore.— Win - ter -

II know I've seen it be - fore.—

*mf*

22

I  
light, \_\_\_\_\_ win - ter - light, \_\_\_\_\_

II  
Win - ter-light, \_\_\_\_\_ win - ter - light, \_\_\_\_\_

*f*

25

I  
\_\_\_\_\_ it's a glit-ter-ing win - ter's night,

II  
win - ter-light, \_\_\_\_\_ gold-en, glow-ing win - ter's night,

28

⑧

I  
win - ter bright. Win - ter - light, \_\_\_\_\_

II  
win - ter bright. Win - ter-light, \_\_\_\_\_

31

I  
win - ter - light, \_\_\_\_\_ it's a

II  
win - ter - light, \_\_\_\_\_ win - ter-light, -

34

I  
shi-ver-ing \_\_\_\_\_ *sub. p* si - lent night.

II  
sil-ver, shin-ing \_\_\_\_\_ *sub. p* si - lent night.

*sub. p*

37

I  
*mp* Qui-et and mag - i - cal, \_\_\_\_\_ win - ter - light.

II  
*mp* Qui-et and mag - i - cal, \_\_\_\_\_ win - ter - light.

*mp*

*S<sup>va</sup>* - - - - -



# First Footprints

Unison/Two-part Chorus, Piano, and Optional Jingle Bells and Soprano Glockenspiel\*

Words and Music by  
Phyllis Wolfe White and Karen Bodoin

Ranges: Part I Part II

**14** With excitement! ♩ = ca. 116

(one excited voice shouts)

With excitement! ♩ = ca. 116

Look! It's snow-ing!

*f* +SG and JB

4

*mf* All voices

Frost - y win - dows greet the

-SG; JB tacet to m. 72  
*mp*

6

morn - ing light. — Out my win - dow is a

+SG -SG

Duration: approx. 2:10

\*Jingle Bell and Soprano Glockenspiel parts are on page 28.

© 2000 Heritage Music Press, a division of The Lorenz Corporation. All rights reserved. Printed in U.S.A.

Unauthorized reproduction of this publication is a criminal offense subject to prosecution.

THE CCLI LICENSE DOES NOT GRANT PERMISSION TO PHOTOCOPY THIS MUSIC.

8

blan - ket of white. — So much ex - cite - ment,

+SG -SG *mf*

10

so much de-light, — mak-ing first foot-prints in a blan-ket of

3 3 3

13

(15)

white. Snow, snow! —

*f* +SG

16

*mf*

Chil - ly - cheeked chil - dren with a

-SG *mf*

18

sled un - der - neath, — fly - ing down - hill in a

+SG -SG

20

snow - spray - ing wreath. — Smiles so big, show - ing

+SG -SG

22 (16)

ear - to - ear teeth! Mak - ing first foot - prints

24 Part I

I with a sled un - der - neath.

Part II (optional—doubled by SG) *mf*

II Snow, — snow, —

+SG